

1 **Persistence of SARS-CoV-2 omicron variant in children and utility of rapid antigen**
2 **testing as an indicator of culturable virus**

3
4 Zoe M. Lohse^{1,2}, Jerne J. Shapiro^{1,2}, John A. Lednicky^{1,3}, Melanie N. Cash^{1,4}, Inyoung Jun^{1,2},
5 Carla N. Mavian^{1,4}, Massimiliano S. Tagliamonte^{1,4}, Cyrus Saleem¹, Yang Yang^{1,5},
6 Eric J. Nelson^{1,3,6}, Marco Salemi^{1,4}, Kathleen A. Ryan^{1,6}, J. Glenn Morris, Jr.^{1,7}

7
8 1. Emerging Pathogens Institute, University of Florida, Gainesville, FL, USA

9 2. Department of Epidemiology, College of Public Health and Health Professions, University of
10 Florida, Gainesville, FL, USA

11 3. Department of Environmental and Global Health, College of Public Health and Health
12 Professions, University of Florida, Gainesville, FL, USA

13 4. Department of Pathology, Immunology, and Laboratory Medicine, College of Medicine,
14 University of Florida, Gainesville, FL, USA

15 5. Department of Biostatistics, College of Public Health and Health Professions, University of
16 Florida, Gainesville, FL, USA

17 6. Department of Pediatrics, College of Medicine, University of Florida, Gainesville, FL, USA

18 7. Department of Medicine, College of Medicine, University of Florida, Gainesville, FL, USA

19 *Key words:* SARS-CoV-2 persistence in children, SARS-CoV-2 culture, SARS-CoV-2 omicron,
20 pediatrics, rapid antigen test, rapid diagnostic test

21 *Running Title:* SARS-CoV-2 persistence in children

22 *Corresponding author:* J. Glenn Morris, Jr., Emerging Pathogens Institute, University of Florida,
23 jgmorris@epi.ufl.edu

24 *Alternative corresponding author:* John A. Lednicky, Emerging Pathogens Institute, University of
25 Florida, jlednicky@PHHP.ufl.edu

26

27 **ABSTRACT**

28 We screened 65 longitudinally-collected nasal swab samples from 31 children aged 0-16
29 years who were positive for SARS-CoV-2 omicron BA.1. By day 7 after onset of symptoms 48%
30 of children remained positive by rapid antigen test. In a sample subset we found 100%
31 correlation between antigen test results and virus culture.

32

33 The Coronavirus disease 2019 (COVID-19) pandemic began with the emergence of the
34 novel coronavirus SARS-CoV-2 in late 2019. Since the first reported case of COVID-19 in
35 China, the intensity of the pandemic and our understanding of disease transmission has ebbed
36 and flowed with the introduction of competing variants worldwide [1].

37 On July 20, 2020, the U.S. Centers for Disease Control and Prevention (CDC)
38 recommended that persons infected with SARS-CoV-2 isolate for a 10-day period, without
39 requirements for an associated negative test for the virus [2]. This followed from studies
40 showing that virtually all non-immunosuppressed patients with mild to moderate disease
41 became culture-negative by day 10 of infection, with virus culture providing what was regarded
42 as the optimal laboratory marker for infectivity [3-5]. The Florida Department of Health (FDOH),
43 in an Emergency Rule issued September 21, 2021 [6] indicated that children infected with
44 SARS-CoV-2 could return to school sooner than 10 days if they had a negative COVID test and
45 were asymptomatic. On January 14, 2022, CDC changed their recommendation to say that
46 children and adults infected with SARS-CoV-2 should isolate for 5 days, and, if afebrile, could
47 then return to work/school but should wear a high-quality mask for an additional 5 days [7,8].
48 The FDOH position was changed on February 24, 2022, to say that children only needed to
49 isolate for 5 days before returning to school, without further testing, and that masking was not
50 necessary [9]. In this somewhat confusing setting, as the Omicron variant was spreading
51 rapidly in Florida, we sought to characterize SARS-CoV-2 Omicron persistence and infectivity
52 among children with mild illness in an outpatient setting.

53 Children with a positive rapid antigen test or a PCR-based test for SARS-CoV-2 were
54 referred from the UFHealth pediatric clinic or by school nurses at a near-by local public school
55 [10]. We focused on enrolling children who were five or more days from onset of symptoms,
56 with samples collected between 12/20/2021 and 2/21/2022. In two instances in which multiple
57 children from a family were enrolled, we also collected samples from parents of the participating
58 children. The study was approved by the University of Florida IRB (protocol IRB202000488),

59 with signed informed consent obtained from participants. Parents consented for children under
60 the age of 18, with assent for children over seven years of age.

61 We obtained 65 nasal swab samples from 31 children aged 0-16 years, and eight
62 samples from three parents. Two anterior nasal swab samples were obtained from each
63 participant: one was immediately tested with the BinaxNOW rapid antigen test (Abbott
64 Laboratories, Abbott Park, Ill), and the second was frozen at -80°C for subsequent culture,
65 reserve transcriptase quantitative polymerase chain reaction (RT-qPCR), viral load
66 determination and sequencing. Children who had a positive result on the initial follow-up test
67 done as part of this study were asked to return on day 7, 10, and thereafter, with testing
68 continuing until a negative test result was obtained. If a negative rapid antigen test result was
69 obtained before day 10 of isolation, children were given a note which permitted them to return to
70 school, as specified in the September 2021 FDOH Emergency Rule.

71 BinaxNOW testing was done following the manufacturer's instructions, and participants
72 were provided with results as soon as testing was completed. As described in Supplementary
73 Methods, RT-qPCR [11] was performed and a standard curve generated using N1 quantitative
74 standards 10-fold diluted to determine viral copies. cDNA synthesis and library preparation
75 were performed using the COVIDSeq Test kit and Mosquito HV Genomics Liquid Handler.
76 Sequences were aligned with those from other local cases to determine relatedness with
77 community spread using viralMSA and the MN908947 reference sequence [12]. A maximum
78 likelihood phylogenetic tree was reconstructed using IQ-TREE with the best fitting nucleotide
79 substitution model according to the Bayesian Information Criterion and 1,000 bootstrap
80 replicates [13].

81 We used a variety of cell lines for virus culture, including LLC-MK2 and Vero E6 cells
82 and A549 cells expressing ACE-2, HEK 293T cells expressing human ACE-2, and VeroE6 with
83 high endogenous ACE-2 [14-16]; see supplementary methods for details. Cells were observed
84 daily for one month before being scored negative for virus isolation. When virus-induced

85 cytopathic effects (CPE) were evident, the presence of SARS-CoV-2 was determined by RT-
86 PCR [17,18]. Isolation of SARS-CoV-2 at or after six days post-inoculation of cells was most
87 effective in VeroE6-ACE-2 and HEKT293-ACE-2 cells (10^4 to 10^7 genome equivalents/ μ L of
88 purified vRNA), with marginally lower virus yields in LLC-MK2 and VEROE6 cells, and generally
89 low yields in A549-ACE-2 cells (10^1 to 10^2 genome equivalents/ μ L of purified vRNA).

90 Median age of the 31 children enrolled was seven years (range 0-16), including 10
91 children under the age of five; two-thirds were boys. Results of the rapid antigen test were
92 negative for 10 children at the time they enrolled in our study, which was day 4 or later after
93 onset of symptoms and/or their initial positive test for SARS-CoV-2; these 10 children were not
94 tested further. We obtained at least one positive rapid antigen test for the remaining 21
95 children, with a subsequent negative test for 14 children, collected a median of 2 days after their
96 last positive test. Including the 10 children who had an initial negative test and assuming that
97 children would be positive on all days before their last positive test, 67% would have been
98 positive for SARS-CoV-2 on day 5, with 48% still positive by rapid antigen on day 7 (Figure 1).
99 We fitted a parametric survival model to estimate the percent of remaining positive over time,
100 accounting for interval-censoring and right-censoring of the exact transition times from positive
101 to negative (see supplementary methods). The mean and median durations of remaining
102 positive were estimated to be 7.74 (95% CI: 6.54, 9.17) days and 7.51 (95% CI: 6.24, 9.04)
103 days, respectively, and the inter-quartile range is (5.23, 9.99)(Supplementary Figure S1). The
104 model predicted that the probability of remaining positive dropped to 10% by day 12, close to
105 our data-based estimate of the percent positive.

106 Virus cultures were performed for the first 15 samples collected from children and the
107 eight samples from parents. SARS-CoV-2 grew in cultures of 16 of these 23 samples (11 from
108 children, five from adults), all of which were also positive by rapid antigen testing. No growth
109 was detected in seven cultures (four samples from children, three from adults), all of which were
110 negative by rapid antigen testing. The correlation between culture and rapid antigen testing

111 results was significant for both children and adults ($p < 0.0001$ for children, $p = 0.02$ for adults,
112 Fisher's Exact).

113 A total of 40 positive rapid antigen test results were obtained for children enrolled in the
114 study; all were positive by RT-qPCR. Among 25 samples with a negative rapid antigen test
115 result, 9 were RT-qPCR positive, with a median viral load of \log_{10} 3.45 copies/mL (range \log_{10}
116 3.08-4.23 copies/mL). Four of these nine samples had been cultured; all were culture-negative.
117 For children for whom serial samples were available, all showed a consistent pattern of
118 decreasing viral load across time. We did not see an age-related difference in viral load after
119 correcting for day of illness, nor was viral load or duration of infection correlated with vaccination
120 status (42% of children were vaccinated) [19]. Representative results from one child for whom
121 eight serial samples were available are shown in Table 1: this was an otherwise healthy child
122 under the age of five years who was febrile (38.3°C) with mild upper respiratory symptoms for
123 one day when first diagnosed, with no further symptoms.

124 All SARS-coV-2 positive samples were sequenced, and all were found to be omicron
125 BA.1; sequence data have been submitted to GISAID (see supplementary material).
126 Phylogenetic analysis revealed minimal variability across the sample set, consistent with spread
127 of a single clade within the community. While approximately one-third of children in the sample
128 attended a single public school, we did not see any evidence of increased clustering among
129 children from that school. We did identify tighter clustering within families (including the families
130 for which we had sequence data for both children and parents) as might be expected if
131 transmission was occurring primarily within families rather than within community settings.

132 **Comment:** While the numbers of participants and samples analyzed were low, we found an
133 exact correlation between results from the BinaxNOW rapid antigen test and results of cell
134 culture, generally accepted as the best marker for virus infectivity [3-5,19]. We did have
135 samples that were negative by rapid test and positive by rRT-PCR; however, viral loads in these
136 instances were low, and it is unclear that children from whom these samples were obtained

137 would have been infectious, particularly in light of the negative cultures obtained. We
138 emphasize that these findings are specific for SARS-CoV-2 omicron BA.1, and it will require
139 epidemiologic studies to fully assess infectivity; results may well differ with other variants. We
140 note that all samples for this study were obtained on day 4 or thereafter, so we cannot comment
141 on possible delays in obtaining an initial positive result with rapid antigen testing.

142 In this study close to half of infected children remained positive for SARS-CoV-2 (and
143 likely were infectious) for at least two days after they would have returned to school under the
144 January 14, 2022 CDC guidelines. While transmission would be reduced by wearing a mask,
145 as recommended by CDC, wearing of masks in school settings was highly controversial in
146 Florida, and FDOH specifically recommended against the use of masks in their February 24,
147 2022 statement [9]. There is clear value, from a social standpoint, in minimizing the isolation
148 period of children infected with SARS-CoV-2. At the same time, from a public health standpoint,
149 there is a need to minimize the risk that infected children will continue to transmit the virus after
150 their return to school. Consideration should be given to lengthening the current
151 recommendation for five days of isolation before return to school, potentially in combination with
152 requirements for a negative rapid test result.

153

154 **Footnotes**

155 **Funding sources:** There were no funding sources for the project external to the University of

156 Florida.

157 **Conflict of Interest:** All authors deny any conflict of interest relevant to this manuscript.

158

159 **REFERENCES**

- 160 1. CDC. About Variants. [https://www.cdc.gov/coronavirus/2019-ncov/variants/about-](https://www.cdc.gov/coronavirus/2019-ncov/variants/about-variants.html?s_cid=11723:covid%2019%20variants%20of%20concern:sem.ga:p:RG:GM:gen:P)
- 161 [variants.html?s_cid=11723:covid%2019%20variants%20of%20concern:sem.ga:p:RG:GM:gen:P](https://www.cdc.gov/coronavirus/2019-ncov/variants/about-variants.html?s_cid=11723:covid%2019%20variants%20of%20concern:sem.ga:p:RG:GM:gen:P)
- 162 [TN:FY22](#). Accessed 6/2/2022; page last updated 4/26/2022.
- 163 2. CDC. Updates from previous ending home isolation webpage content.
- 164 [https://www.cdc.gov/coronavirus/2019-ncov/hcp/duration-](https://www.cdc.gov/coronavirus/2019-ncov/hcp/duration-isolation.html#anchor_1631644826603)
- 165 [isolation.html#anchor_1631644826603](https://www.cdc.gov/coronavirus/2019-ncov/hcp/duration-isolation.html#anchor_1631644826603). Accessed 6/13/2022.
- 166 3. Walsh KA, Spillane S, Comber L, *et al*. The duration of infectiousness of individuals infected
- 167 with SARS-CoV-2. *J Infect* 2020;81:847-856. <https://doi.org/10.1016/j.jinf.2020.10.009>.
- 168 4. Cui C, Kweon O-J, Jung S-Y, *et al*. Duration of culturable SARS-CoV-2 in hospitalized
- 169 patients with COVID-19. *N Eng J Med* 384;7 DOI:10.1056/NEJMc2027040
- 170 5. Owusu D, Pomeroy MA, Lewis NM, *et al*. Persistent SARS-CoV-2 RNA shedding without
- 171 evidence of infectiousness: A cohort study of individuals with COVID-19. *J Infect Dis*
- 172 2021;224:1362-71. DOI:10.1093/infdis/jiab107.
- 173 6. CDC. Overview of COVID-19 Isolation for K-12 Schools.
- 174 [https://www.cdc.gov/coronavirus/2019-ncov/community/schools-childcare/k-12-contact-](https://www.cdc.gov/coronavirus/2019-ncov/community/schools-childcare/k-12-contact-tracing/about-isolation.html)
- 175 [tracing/about-isolation.html](https://www.cdc.gov/coronavirus/2019-ncov/community/schools-childcare/k-12-contact-tracing/about-isolation.html). Accessed 6/2/1022; page last updated 1/6/2022.
- 176 7. CDC. Ending Isolation and Precautions for People with COVID-19: Interim Guidance.
- 177 www.cdc.gov/coronavirus/2019-ncov/hcp/duration-isolation.html. Accessed 6/2/2022; page last
- 178 updated 1/14/2022.
- 179 8. Florida Department of Health. Notice of Emergency Rule. Rule No:64DER21-12, Protocols
- 180 for controlling COVID-19 in school settings, August 6, 2021.
- 181 9. Florida Department of Health. COVID-19 Guidance Recommendations, February 24, 2022.
- 182 10. Nelson EJ, McKune SL, Ryan KA, *et al*. Antigen versus RT-PCR tests for screening
- 183 quarantined students during a SARS-CoV-2 delta variant surge. *JAMA Pediatr*. Published
- 184 online March 7, 2022. doi:10.1001/jamapediatrics.2022.0080

- 185 11. CDC - National Center for Immunization and Respiratory Diseases (NCIRD), Division of
186 Viral Diseases - [https://www.cdc.gov/coronavirus/2019-ncov/lab/rt-pcr-panel-primer-](https://www.cdc.gov/coronavirus/2019-ncov/lab/rt-pcr-panel-primer-probes.html/)
187 [probes.html/](https://www.cdc.gov/coronavirus/2019-ncov/lab/rt-pcr-panel-primer-probes.html/). June 6, 2020.
- 188 12. Moshiri N. ViralMSA: Massively scalable reference-guided multiple sequence alignment of
189 viral genomes. *Bioinformatics* 2020. doi:10.1093/bioinformatics/btaa743.
- 190 13. Nguyen LT, Schmidt HA, von Haeseler A, Minh BQ. IQ-TREE: a fast and effective stochastic
191 algorithm for estimating maximum-likelihood phylogenies. *Mol Biol Evol* 2015;32:268-274,
192 doi:10.1093/molbev/msu300.
- 193 14. Zhao H, Lu L, Peng Z, *et al.* SARS-CoV-2 Omicron variant shows less efficient replication
194 and fusion activity when compared with Delta variant in TMPRSS2-expressed cells, *Emerging*
195 *Microbes & Infections* 2022;11(1):277-283, DOI: 10.1080/22221751.2021.2023329
- 196 15. Yadav PD, Gupta N, Potdar V, *et al.* Isolation and Genomic Characterization of SARS-CoV-
197 2 Omicron Variant Obtained from Human Clinical Specimens. *Viruses* 2022;14(3):461.
198 <https://doi.org/10.3390/v14030461>
- 199 16. Suzuki R, Yamasoba D, Kimura I *et al.* Attenuated fusogenicity and pathogenicity of SARS-
200 CoV-2 Omicron variant. *Nature* (2022). <https://doi.org/10.1038/s41586-022-04462-1>
- 201 17. Lednicky JA, Lauzard M, Fan ZH, *et al.* Viable SARS-CoV-2 in the air of a hospital room
202 with COVID-19 patients. *Int J Infect Dis.* 2020 Nov;100:476-482. doi: 10.1016/j.ijid.2020.09.025.
203 Epub 2020 Sep 16. PMID: 32949774; PMCID: PMC7493737.
- 204 18. Lednicky JA, Shankar SN, Elbadry MA, *et al.* Collection of SARS-CoV-2 virus from the air of
205 a clinic within a university student health care center and analyses of the viral genome. *Aerosol*
206 *Air Qual Res* 20 (2020), pp. 1167–1171.
- 207 19. Boucau J, Marino C, Regan J, *et al.* Duration of viable virus shedding in SARS-CoV-2
208 omicron variant infection (p. 2022.03.01.22271582). medRxiv.
209 <https://doi.org/10.1101/2022.03.01.22271582>
- 210

211 **Table 1:** Results of SARS-CoV-2 rapid antigen testing, cell culture, cycle times (CT value), viral
212 load (log₁₀ copies/mL) and symptoms, by days of infection in otherwise healthy child under the
213 age of five years.

Day of Infection	Rapid antigen testing	Cell culture	CT value	Viral load, (Log ₁₀ copies/mL)	symptoms
6	pos	pos	22.12	8.5	none
8	pos	pos	24.04	7.6	none
10	pos	pos	31.15	5.8	none
11	pos	pos	30.48	5.5	none
12	pos	pos	33.95	4.7	none
13	pos	pos	35.20	4.6	none
14	pos	pos	33.61	4.2	none
16	neg	neg	38.10	3.3	none

214

215

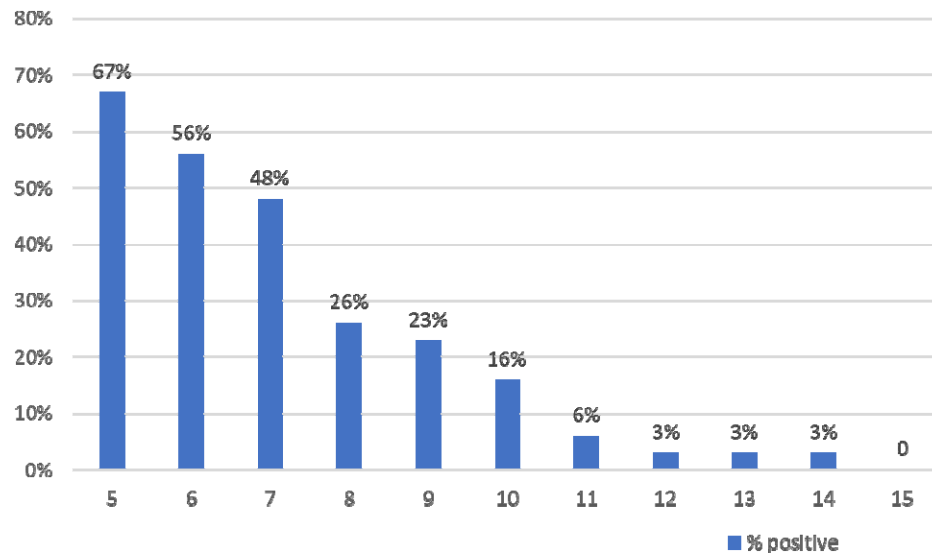
216

217

218

219 **Figure 1:** Percent of children with positive rapid antigen test, by day of infection

220



221

222

223 **Supplementary Figure S1.** Model-predicted probability of remaining test-positive since
224 symptom onset. This probability curve (black solid) is simply the survival function for the fitted
225 Weibull model, and the 95% confidence bands (red dashed) are derived using the delta method.
226 Mean (blue solid) and median (green dashed) times from symptom onset to turning negative are
227 shown as vertical lines.

