



Reindeer Slipover

by Martin Storey



SIZE

8	10	12	14	16	18	20	22	
To fit bust								
81	86	91	97	102	107	112	117	cm
32	34	36	38	40	42	44	46	in

YARN

Rowan Felted Tweed

A Avocado 161								
3	4	4	4	4	5	5	5	x 50gm
B Treacle 145								
2	2	2	2	2	2	2	3	x 50gm

NEEDLES

- 1 pair 3¼mm (no 10) (US 3) needles
- 1 pair 3¾mm (no 9) (US 5) needles

TENSION

26½ sts and 26 rows to 10 cm measured over patt using 3¾mm (US 5) needles.

BACK

Using 3 ¼mm (US 3) needles and yarn A, cast on 101 [107:111: 119: 127: 135: 143: 151] sts.

Row 1 (RS): K1, *P1, K1, rep from * to end.

Row 2: P1, *K1, P1, rep from * to end.

These 2 rows form rib.

Work in rib for 10 cm, ending with RS facing for next row.

Change to 3¾mm (US 5) needles.

Using the **fairisle** technique as described on the information page, beg and ending rows as indicated, work the 8 rows of

chart A **once** repeating the 24 st patt rep 4 times across each row, then work the 37 rows of chart B **throughout**, repeating the 36 st patt rep twice across each row, now work in patt from charts, which is worked entirely in st st beg with a K row, as folls:

Keeping patt correct, inc 1 st at each end of 11th and every foll 10th [10th: 10th: 10th: 10th: 12th: 12th: 12th] row to 111 [117: 121: 129: 137: 145: 153: 161] sts, taking inc sts into patt.

Cont straight until back meas 34 [33: 34: 35: 35: 36: 36: 37] cm, ending with RS facing for next row.

Shape armholes

Keeping patt correct, cast off 7 [9: 9: 11: 11: 13: 13: 15] sts at beg of next 2 rows. 97 [99: 103: 107: 115: 119: 127: 131] sts. ****** Dec 1 st at each end of next 3 [3: 3: 3: 5: 5: 7: 7] rows, then on foll 5 alt rows and then on 2 foll 4th rows. 77 [79: 83: 87: 91: 95: 99: 103] sts.

Work a further 25 [27: 29: 29: 29: 31: 29: 31] rows ending with RS facing for next row. (Armhole should meas approx 18.5 [19: 19.5: 20: 20.5: 21: 21.5: 22] cm.)

Shape shoulders and back neck

Cast off 7 [7: 8: 8: 9: 9: 10: 11] sts at beg of next 2 rows. 63 [65: 67: 71: 73: 77: 79: 81] sts.

Next row (RS): Cast off 7 [7: 8: 8: 9: 9: 10: 11] sts, patt until there are 10 [11: 11: 13: 12: 14: 14: 14] sts on right needle and turn, leaving rem sts on a holder.

Work each side of neck separately.

Cast off 4 sts at beg of next row.

Cast off rem 6 [7: 7: 9: 8: 10: 10: 10] sts.

With RS facing, rejoin yarns to rem sts, cast off centre 29 [29: 29: 29: 31: 31: 31: 31] sts, patt to end.

Complete to match first side, reversing shapings.

FRONT

Work as given for back to **.

Dec 1 st at each end of next 2 rows. 93 [95: 99: 103: 111: 115: 123: 127] sts.

Divide for neck

Next row (RS): Patt2tog, patt 44 [45: 47: 49: 53: 55: 59: 61] sts, and turn, leaving rem sts on a holder.

Work each side of neck separately.

Dec 1 st at armhole edge of next 0 [0: 0: 0: 2: 2: 4: 4] rows, then on 5 foll alt rows, then on 2 foll 4th rows **and at same time** dec 1 st at neck edge of 2nd and 8 [8: 8: 8: 9: 9: 10: 10] foll alt rows. 29 [30: 32: 34: 35: 37: 38: 40] sts.

Dec 1 st at neck edge only on 2nd and foll 4 [4: 3: 3: 3: 2: 1: 0] alt rows, then on every 4th row to 20 [21: 23: 25: 26: 28: 30: 32] sts.

Cont straight until front matches back to beg of shoulder shaping, ending with RS facing for next row.

Shape shoulder

Cast off 7 [7: 8: 8: 9: 9: 10: 11] sts at beg of next and foll alt row.

Work 1 row.

Cast off rem 6 [7: 7: 9: 8: 10: 10: 10] sts.

With RS facing, slip centre st onto a holder, rejoin yarn to rem sts, patt to last 2 sts, patt2tog.

Complete to match first side, reversing shapings.

MAKING UP

Press as described on information page.

Join right shoulder seam using back stitch, or mattress stitch if

preferred.

Neckband

With RS facing, using 3¼mm (US 3) needles and yarn A, pick up and knit 48 [50: 52: 52: 54: 56: 56: 58] sts down left side of neck, K st on holder at base of V and mark this st with a coloured thread, pick up and knit 48 [50: 52: 52: 54: 56: 56: 58] sts up right side of neck, then 36 [36: 36: 36: 38: 38: 38: 38] sts from back. 133 [137: 141: 141: 147: 151: 151: 155] sts.

Next Row (WS): *P1, K1, rep from * to within 2 sts of marked st, P2tog, P marked st, P2tog tbl, ** K1, P1, rep from ** to end. 131 [135: 139: 139: 145: 149: 149: 153] sts.

This row sets position of rib.

Keeping rib correct, cont as folls:

Row 1 (RS): Rib to within 2 sts of marked st, P2tog tbl, K marked st, P2tog, rib to end.

Row 2: Rib to within 2 sts of marked st, P2tog, P marked st, P2tog tbl, P2tog, rib to end.

Rep last 2 rows twice more, ending with RS facing for next row. 119 [123: 127: 127: 133: 137: 137: 141] sts.

Cast off in rib, dec either side of marked st as before.

Join left shoulder seam and neckband seam.

Armhole borders (both alike)

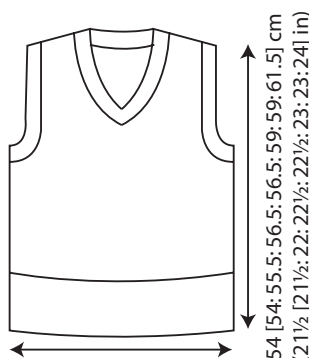
With RS facing, using 3 ¼mm (US 3) needles and yarn A, pick up and knit 113 [121: 125: 129: 135: 143: 145: 153] sts evenly all round armhole edge.

Beg with row 2, work in rib as given for back for 7 rows, ending

with RS facing for next row.

Cast off in rib.

See information page for finishing instructions.



key



Chart A

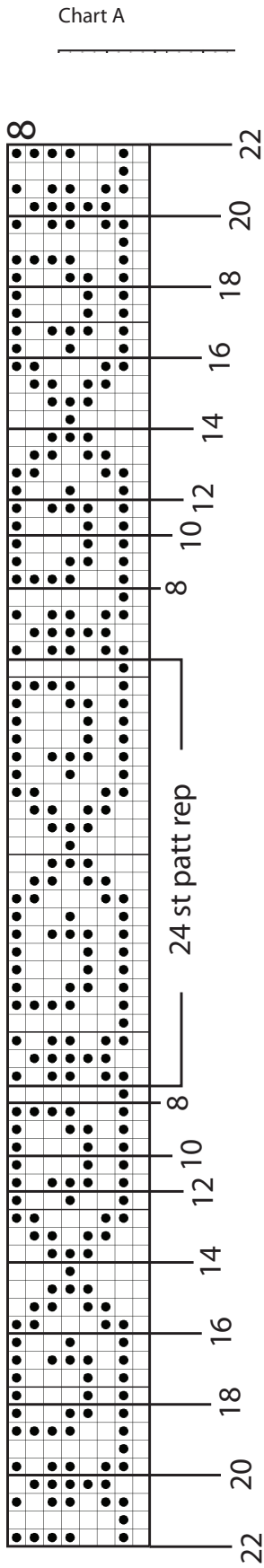


Chart B

