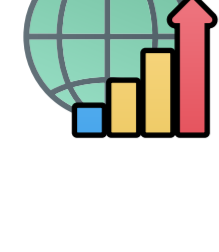


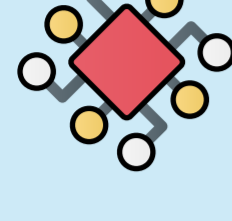
Developing a Skilled Workforce for U.S. Leadership in Technological Innovation and Global Competitiveness

The Department of Commerce Workforce Development Strategy Supports Our Mission To:



Create conditions for economic growth and opportunities for all communities.

How is the Department of Commerce Advancing President Biden's Investing in America Initiative?



By investing in critical and emerging technologies that are essential to our economic competitiveness and national security.

What is Our Workforce Strategy?



Building sustainable, employer-driven career pathways to meet employers' need for talent and connecting Americans to quality jobs.

How Do We Implement Our Workforce Strategy?

We integrate workforce development into our strategic planning and programs.

- Investing in employer-driven regional workforce education and training systems that lead to quality jobs.
- Engaging with businesses to help address their challenges in recruiting and developing a diverse, skilled workforce.
- Producing and distributing timely, easy-to-read information that Americans can use to discover opportunities for skills development and advancement.

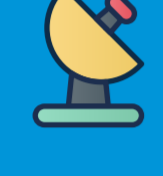


Training America's Workforce Through Critical Investments

Once in a generation investment in our infrastructure, manufacturing, and workforce, including:

BEAD*:

\$42.5 billion

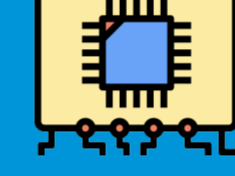


to expand high-speed Internet access by infrastructure deployment, adoption, and workforce development.

<https://internetforall.gov/program/broadband-equity-access-and-deployment-bead-program>

CHIPS:

\$52.7 billion



to revitalize domestic semiconductor manufacturing capacity, research, and the workforce needed for both.

<https://www.nist.gov/chips/workforce-development>

GOOD JOBS CHALLENGE:

\$500 million



to help train Americans by developing our regional workforce training systems and sectorial partnerships.

<https://www.eda.gov/funding/programs/american-rescue-plan/good-jobs-challenge>

TECH HUBS CHALLENGE:



to supercharge ecosystems of innovation for technologies and create new jobs and support opportunities for workers at all skill levels by upskilling and training workers in the fields and industries of tomorrow.

INITIATIVES:



26+

Other workforce development initiatives across the Department of Commerce.



*BEAD = Broadband, Equity, Access, and Deployment Program

Workforce Development Principles

Our workforce development strategy guided by 11 core principles:

- Ensures it is employer-led to better connect skilled workers to quality jobs.
- Includes partners like educational institutions, labor unions, community-based and economic development organizations.
- Offers wrap-around services to support vulnerable populations.
- Advances educational and workplace diversity, equity, inclusion, and accessibility.
- Prioritizes proven earn-and-learn models like Registered Apprenticeships.
- Leads to stackable, industry-recognized credentials and ensure that information is publicly accessible.
- Measures outcomes such as workers' employment and earnings.
- Builds sustainable systems and partnerships.
- Connects workforce development to economic development.
- Coordinates across the federal government.
- Encourages other government and private funding.



Taking Action

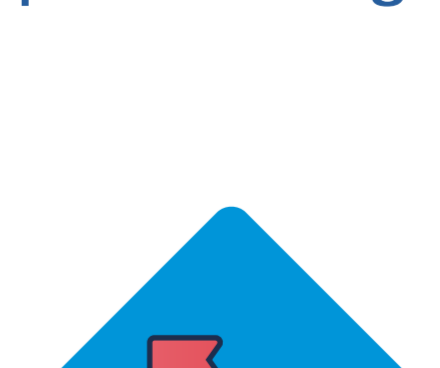
To ensure we are acting on and successfully implementing our workforce development initiatives, we will:



Conduct an annual inventory of education and workforce programs across the department, including program budgets and personnel.



Set and publish metrics and goals on the collective outcomes of our workforce investment programs.



Set goals for each Department bureau for its workforce development programs and activities.

For more information about our workforce development efforts, visit:

<https://www.commerce.gov/issues/workforce-development>

