

# AIRPORT DIAGRAM

HARTSFIELD - JACKSON ATLANTA INTL (ATL)  
ATLANTA, GEORGIA

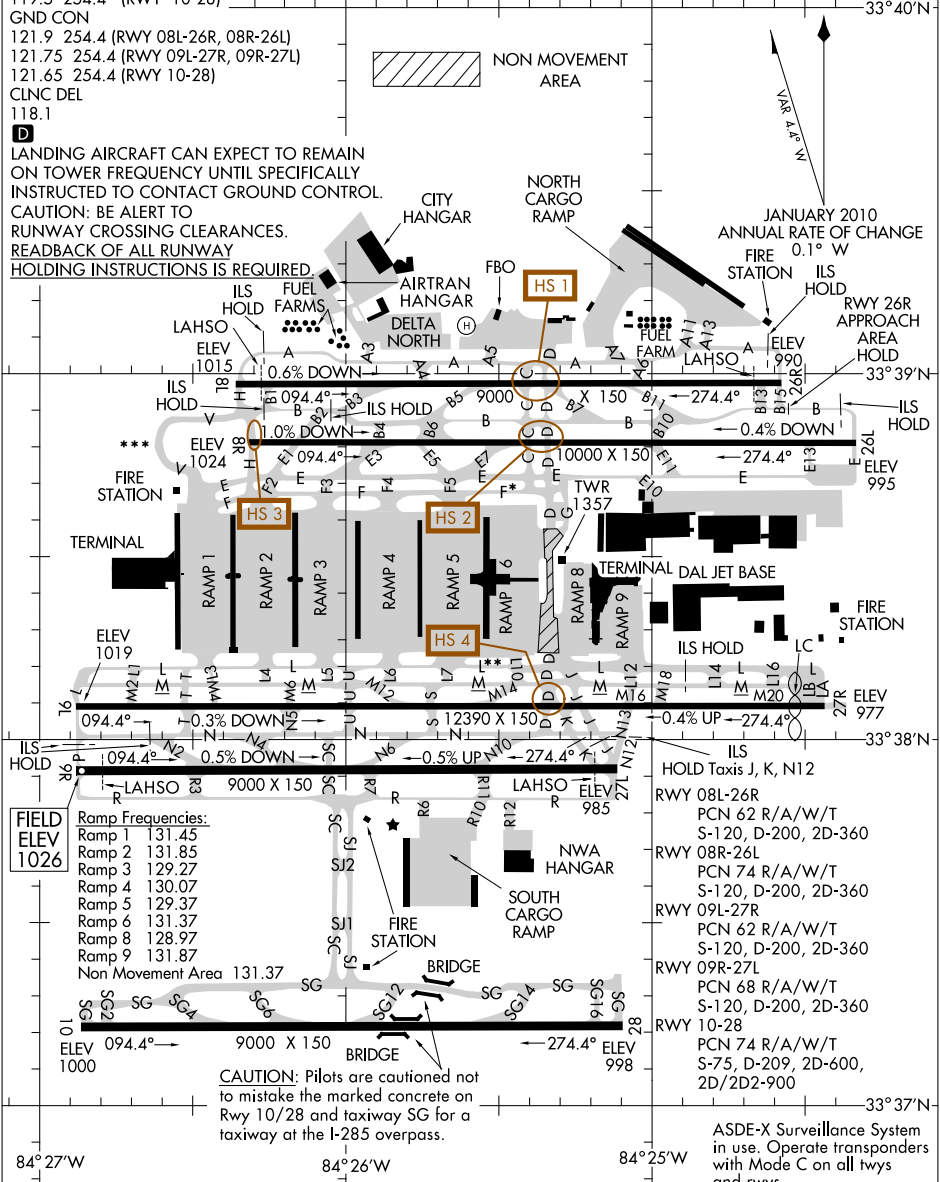
ATIS ARR 119.65  
DEP 125.55  
ATLANTA TOWER  
119.1 254.4 (RWY 08L-26R)  
125.325 254.4 (RWY 08R-26L)  
119.3 254.4 (RWY 09R-27L)  
123.85 254.4 (RWY 09L-27R)  
119.5 254.4 (RWY 10-28)  
GND CON  
121.9 254.4 (RWY 08L-26R, 08R-26L)  
121.75 254.4 (RWY 09L-27R, 09R-27L)  
121.65 254.4 (RWY 10-28)  
CLINC DEL  
118.1

\*Group VI aircraft are restricted from using Taxiway Foxtrot east of Ramp 5 North to the west side of Taxiway Charlie.  
\*\*Group VI aircraft are restricted from using Taxiway Lima east of Ramp 5 South to west of Ramp 6 South.  
\*\*\*Aircraft with wingspan greater than 171' are restricted from using Taxiway Victor.

**D**  
LANDING AIRCRAFT CAN EXPECT TO REMAIN ON TOWER FREQUENCY UNTIL SPECIFICALLY INSTRUCTED TO CONTACT GROUND CONTROL.  
CAUTION: BE ALERT TO RUNWAY CROSSING CLEARANCES.  
READBACK OF ALL RUNWAY HOLDING INSTRUCTIONS IS REQUIRED.

SE-4, 21 AUG 2014 TO 18 SEP 2014

SE-4, 21 AUG 2014 TO 18 SEP 2014



# AIRPORT DIAGRAM

HARTSFIELD - JACKSON ATLANTA INTL (ATL)  
ATLANTA, GEORGIA