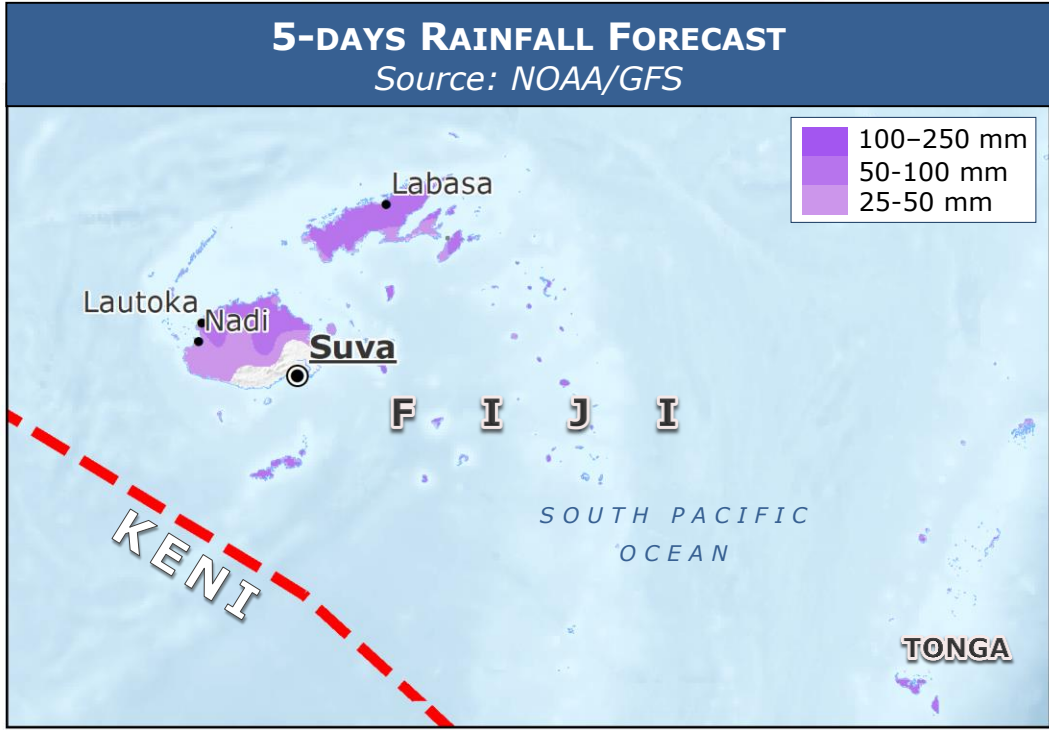
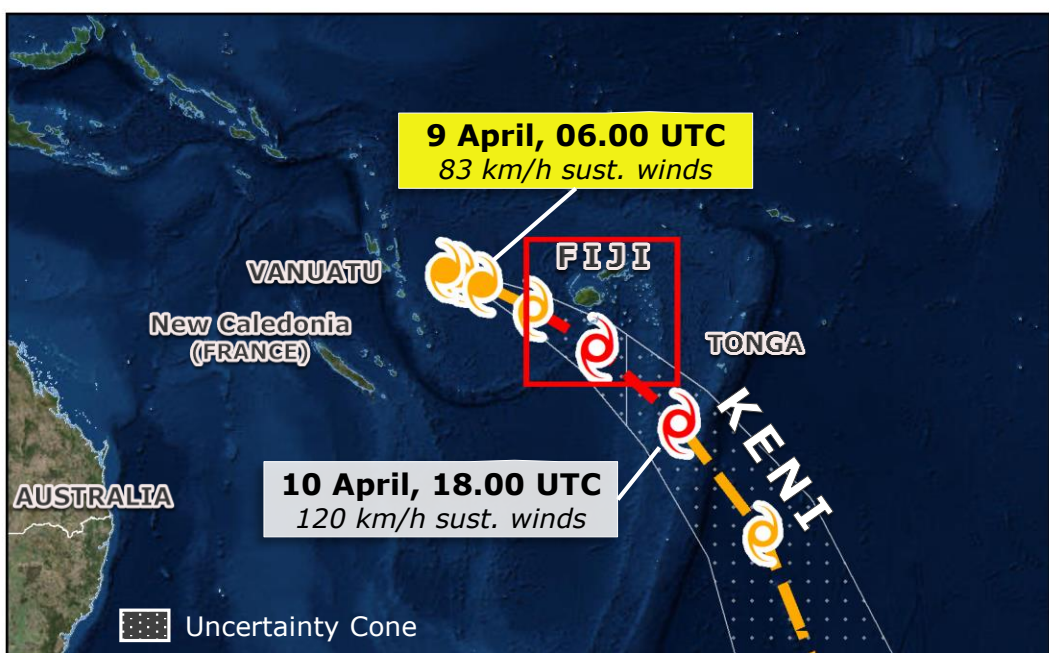
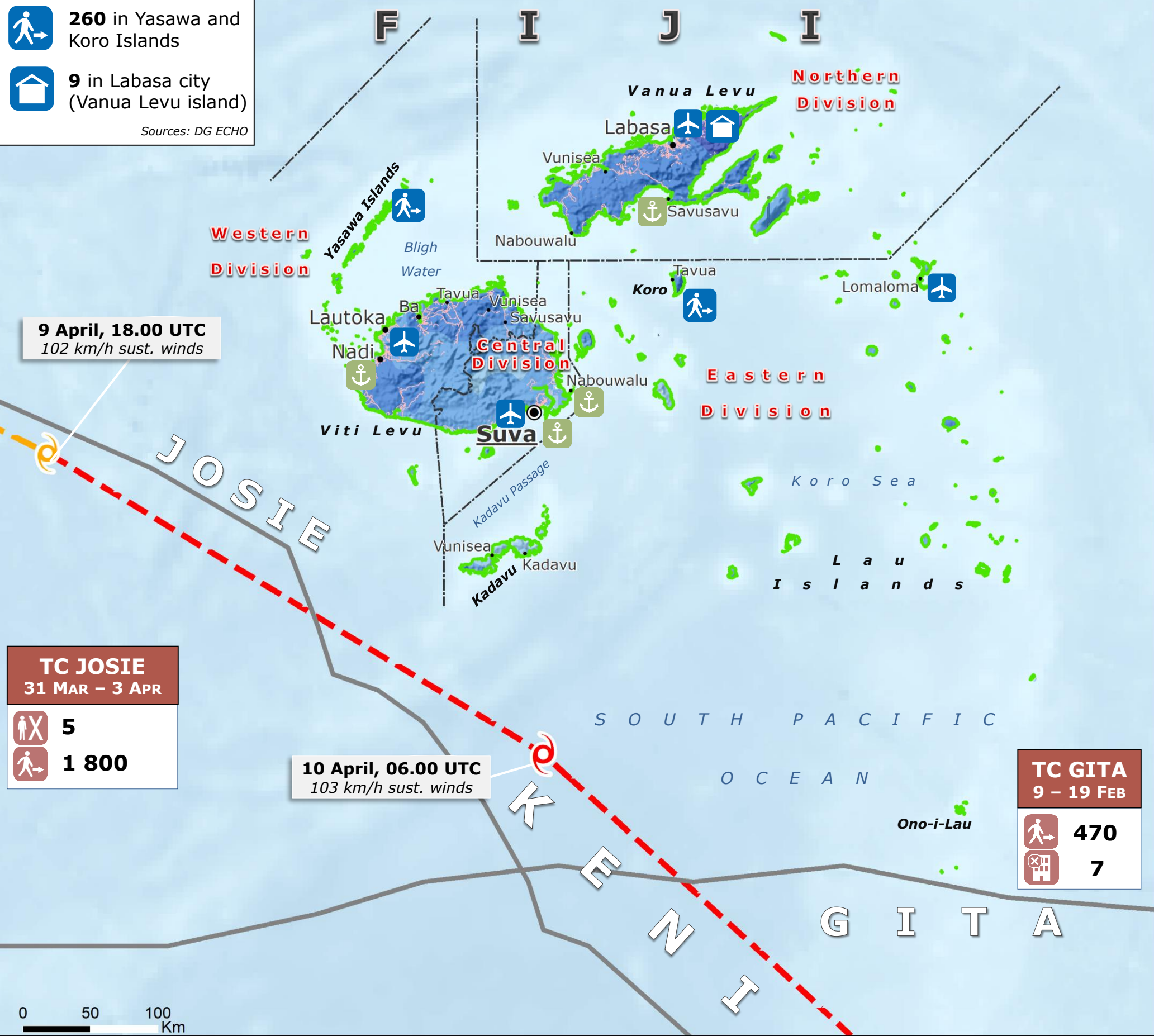


# Fiji | Tropical Cyclone KENI

## SITUATION OVERVIEW TC KENI

- 260** in Yasawa and Koro Islands
  - 9** in Labasa city (Vanua Levu island)
- Sources: DG ECHO



**TC JOSIE**  
31 MAR – 3 APR

- 5**
- 1 800**

**TC GITA**  
9 – 19 FEB

- 470**
- 7**

### TROPICAL CYCLONE

- Observed position
- Forecast position

### INTENSITY

- 63 - 118 km/h
- > 118 km/h

### WIND BUFFER

- >118 km/h

### STORM SURGE (JRC/HWRF)

- < 1 m

### 7-DAYS RAINFALL ACCUMULATION (NASA-GPM)

- 250-500 mm
- 100-250 mm
- 50-100 mm
- 25-50 mm

### COMMUNITY ADVISORY

As of 9 April  
**Admin. Division** Warning for: heavy rains, strong winds, gales, storms and floods (Fiji Met. Service)

### TC KENI

- People Displaced
  - Evacuation Centre
- ### RECENT TROPICAL CYCLONES
- Tropical Cyclone Track (Source: JTWC, GDACS)
  - Fatalities
  - People Displaced
  - Building Damaged
  - Port
  - Airport
  - Division boundary

