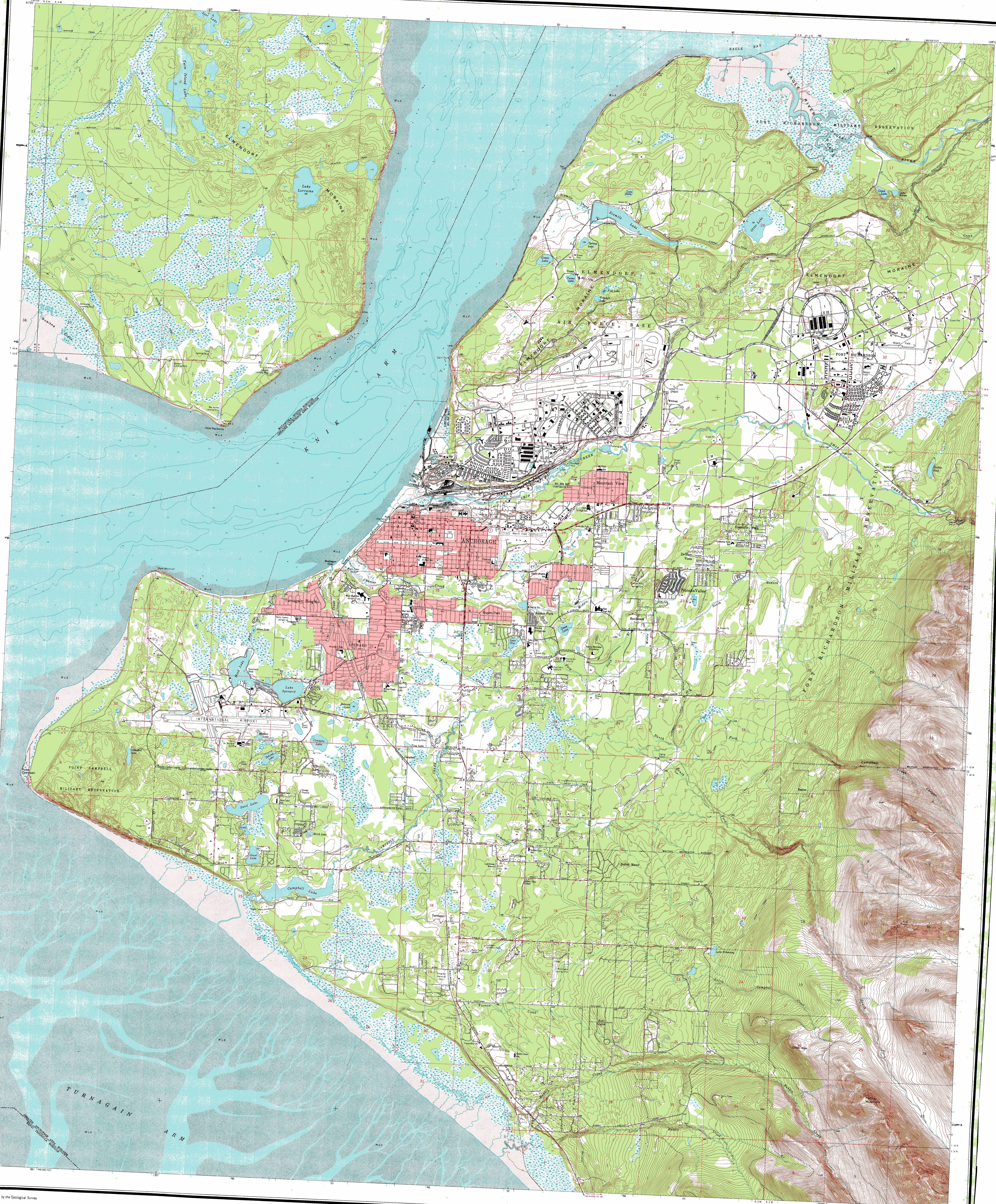
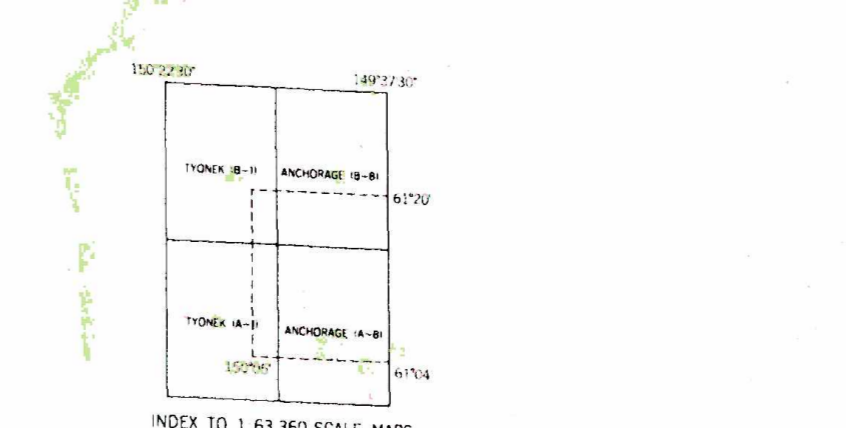
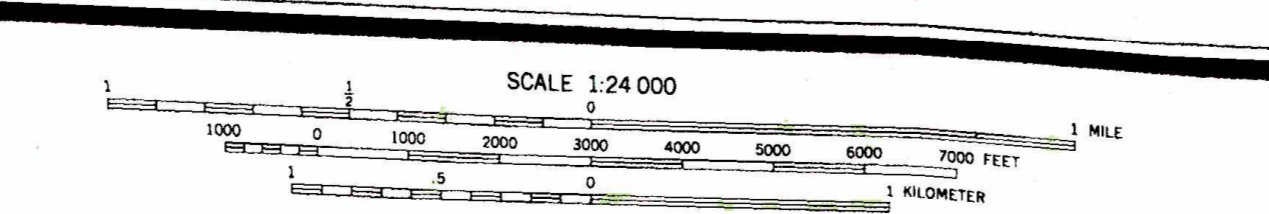


ANCHORAGE AND VICINITY



Map made, edited, and published by the Geological Survey
Copyright © 1962, U.S. Geological Survey
Topographic information extracted from aerial
photographs taken 1952-1953 and 1962
Special photography data compiled from USGS
aerial photography taken 1952-1953 and 1962 (1:50,000)
This information is not intended for navigational purposes
Original horizontal datum: NAD 83
Vertical datum: Mean Sea Level (MSL)
Scale: 1:50,000
Map is accurate within 100 feet (30 meters) at 90 percent confidence
and 200 feet (60 meters) at 95 percent confidence
Data are not shown for unimproved and unimproved locations
produced by the Bureau of Land Management
Page 5-13 Control Markings
Legend symbols are unshaded
This map is a revised edition of the map published in March 27, 1962



ANCHORAGE AND VICINITY, ALASKA
1:50,000
1962
1:50,000

FOR SALE BY U.S. GEOLOGICAL SURVEY, WASHINGTON, D.C. 20540
ALASKA DISTRICT OFFICE, 1000 W. 4TH AVENUE, ANCHORAGE, ALASKA 99501
FOLDER DESIGNATION: ANCHORAGE AND VICINITY, ALASKA