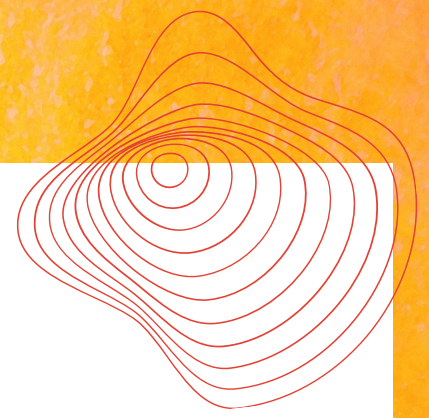


2C-B



WHAT IS IT?

2C-B is a psychedelic drug in the 2C family. 2C-B is classified as a "phenethylamine" - a category of drugs that shares properties of psychedelics and stimulants.

HOW DOES IT WORK?

2C-B is a psychedelic drug in the 2C family. 2C-B is classified as a "phenethylamine" - a category of drugs that shares properties of psychedelics and stimulants.

HOW DO I TAKE IT?

2C-B is most commonly taken orally. It can cause nausea, so some people prefer to boof it (take rectally). Snorting 2C-B is not recommended, as this can be quite painful.

DOSAGE

A lower/starter dose is about 5 mg. An average dose ranges from 15-25 mg. A strong dose ranges from 25-45 mg. Specific dosing is recommended for 2C-B, as just a few milligrams difference can lead to more intense effects.

ONSET & DURATION

When taken orally, onset takes anywhere from 30 minutes to 2 hours, and 2C-B effects typically last 4-6 hours. If snorted, the onset happens more rapidly and effects may be more intense but last for a shorter period of 2-3 hours. Again, snorting 2C-B can be quite painful and is not the recommended route of consumption!

EFFECTS

2C-B has both psychedelic and stimulant properties. At lower doses (15mg or less), it can cause mild mood enhancement. At higher doses, it can cause visual effects (colour enhancement, geometric patterns, surface warping), "rushing" body highs that are like some stimulants and less like other psychedelics, and a gentler headspace than other psychedelics. 2C-B can also cause anxiety, chills, trembling, and nausea.

2C-B vs TUCIBI

Did you know that tucibi is different from 2C-B? Tucibi (also called "tuci" and "pink cocaine") usually contains a mixture of ketamine, MDMA, and/or cocaine, as well as buffering agents like caffeine and acetaminophen.

HARM REDUCTION

- Weigh out your doses. 2C-B is very dose-specific - even a few extra milligrams can intensify effects. Start low and go slow!
- Like with all psychedelics, mental state and setting are important. Being in a good mental state (mood and expectations), with trusted people, in a safe environment improves chances of a good trip.


MORE INFO

- <https://dancesafe.org/2c-b/>
- <https://psychonautwiki.org/wiki/2C-B>
- <https://www.erowid.org/chemicals/2cb/>

CONTACT US

Phone/text: 250-415-7637

Website: substance.uvic.ca

 : @SubtanceUVic

 : @drugcheckingvi

