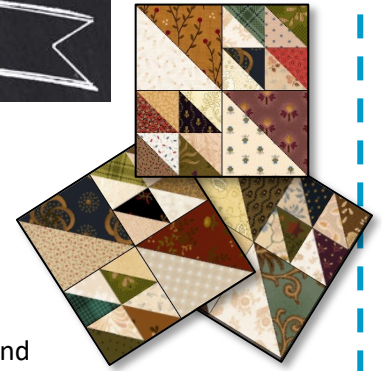


The Stash Buster Challenge

2019



Our Stash Buster Block:

Block Size: 6" x 6" fin. size (6-1/2" x 6-1/2" unfin.)

All seams are 1/4" seam allowance.

To BUST our stash each **Flock of Geese** block is intended to be scrappy. How scrappy will be up to you as the stash buster.

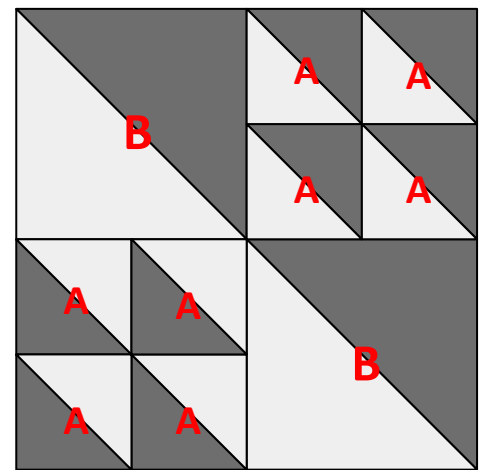
Why did I select this block? After much consideration, this block offered so many different and wonderful quilt layouts and I really think that nothing is greater than seeing a scrappy quilt where each fabric is celebrated yet as an overall the quilt is amazing (not a blob of fabric). Just look at all the different layouts that this block will make starting on Page 3. Sew as many blocks as you want to bust as much stash as you want. You have the entire year! At the end of the year there will be a big surprise!

A quick word about Half-Square Triangles:

As you can see our block does include Half-Square Triangles (HST) in two sizes.

- **HST A** is 1-1/2" x 1-1/2" finished size (2" x 2" unfinished size)
- **HST B** is 3" x 3" finished size (3-1/2" x 3-1/2" unfinished size)

Yes, you can use a different technique to make your HSTs. For your convenience, I have provided three different methods to choose from in order to make your HSTs plus the cutting instructions for each. I would also like to introduce our *Sew Easy Half Square Triangle* pre-printed foundation paper which is an easy no fuss method to make HSTs. This is available on our website.

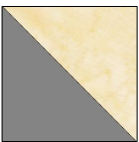


Making Half Square Triangles:

Before cutting any fabric, the following will provide instructions for several methods for making HSTs. You are also welcome to use your own method. Follow the appropriate cutting directions for the method of your choice.

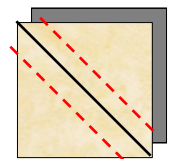
Please review each method and choose your preferred technique to ensure 'scrappiness'!

Method A: Simple Traditional Half-Square Triangles

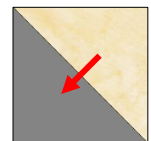


This method is probably the most commonly used technique for making half-square triangles (HST) and will make two identical HSTs at the same time. This method is also easy to make larger to trim for a perfect outcome.

HST A	Cut squares 2-3/8" x 2-3/8" OR 2-1/2" x 2-1/2" for trimming.
HST B	Cut squares 3-7/8" x 3-7/8" OR 4" x 4" for trimming.



- With pencil lightly mark on the wrong side of the lighter fabric square **diagonally from corner to corner** as shown by the black line in the diagram.
- With **right sides together**, place marked lighter fabric square on top of darker fabric square. As per the **red lines** (shown in diagram) stitch 1/4" away from drawn line. Repeat with all remaining squares. Chain stitching is recommended for speed.

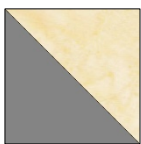


Border Creek Station Pattern Company

• www.bordercreekstation.com •

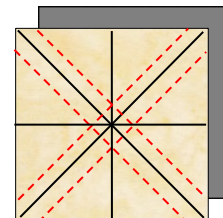
- Cut apart on black line as shown on diagram. Open and press to the darker fabric as shown by the arrow. This will make 2 identical HSTs from each sewn square pair.
- It may be necessary to trim each HST to tidy using the 45-degree line of ruler on the diagonal seam. Each HST square should be trimmed to measure the unfinished size. For **HST A**: 2" x 2" unfinished. For **HST B**: 3-1/2" x 3-1/2" unfinished.

Method B: Traditional Half-Square Triangles

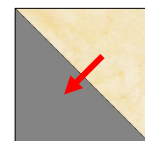


This method is commonly used technique for making half-square triangles but this variation makes eight identical HSTs at the same time. This method is also easy to make larger to trim for a perfect outcome.

HST A	Cut squares 5" x 5" OR 5-1/2" x 5-1/2" for trimming.
HST B	Cut squares 8" x 8" OR 8-1/2" x 8-1/2" for trimming.



- With pencil lightly mark on the wrong side of the lighter fabric square **diagonally from corner to corner in both directions** as shown by the black line in the diagram.
- With **right sides together**, place marked lighter fabric square on top of darker fabric square. As per the **red lines** (shown in diagram) stitch 1/4" away from **X** as drawn. Repeat with all remaining squares. Chain stitching is recommended for speed.
- Cut apart on all black lines as shown on diagram. Open and press to the darker fabric as shown by arrows. This will make 8 identical HSTs from each of the sewn square pairs.
- It may be necessary to trim each HST to tidy using the 45-degree line of ruler on the diagonal seam. Each HST square should be trimmed to measure the unfinished size. For **HST A**: 2" x 2" unfinished. For **HST B**: 3-1/2" x 3-1/2" unfinished.



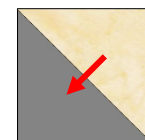
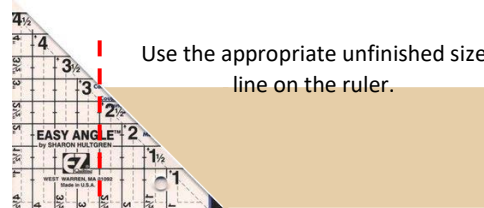
Method C: The Easy Angle™ for Half-Square Triangles



Using the Easy Angle™ ruler is great when making a few HSTs and using an assortment of fabrics as in a scrappy type of quilt. The ruler also allows you to cut the fabric into practical strips in any length that already measure the unfinished size of the square – so no math involved. Although it only makes one HST at a time, the cutting is fast and accurate and uses less fabric.

HST A	Cut strips 2" x 2" OR 2-1/4" x 2-1/4" for trimming.
HST B	Cut squares 3-1/2" x 3-1/2" OR 3-3/4" x 3-3/4" for trimming.

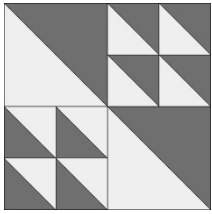
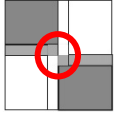
- You can pair up the cut fabric strips with **right sides together** so that each time a cut is made the pair is ready to sew!
- Place ruler on top of fabric, lining up the bottom along the edge of the strips (black tip of ruler will be on the lower right) and the left edge of the ruler at the end of the strips. The top edge of fabric should line up with unfinished size line. For the **HST A**: the 2" line and the **HST B**: the 3-1/2" line as shown in the diagram below (this is the width of the strip). The fabric will fill the triangle area underneath the ruler.
- Cut triangles from the strips as shown then flip the ruler pivoting at the black tip so that the ruler is now to the right side of this same cut (black tip of ruler remains at the lower edge) and ← line up as before to cut another set of triangles. In this manner, continue cutting for the total number of HSTs required.
- Sew cut triangles using 1/4" seam allowance. Chain stitching is recommended for speed. Open and press to the DARKER fabric.
- Each HST square should be trimmed to measure the unfinished size. For **HST A**: 2" x 2" unfinished. For **HST B**: 3-1/2" x 3-1/2" unfinished.



The Scrap Buster Block Assembly:

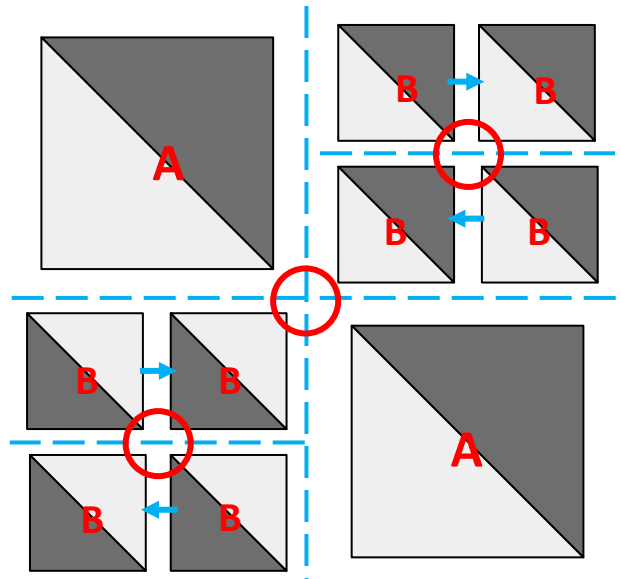
1. Referring to the block diagram, carefully lay out all of the sewn HSTs to make the **Flock of Geese** block. Make sure the HSTs have been positioned correctly – they can be tricky and who wants to ‘reverse sew’?
2. Using a 1/4" seam allowance, join the pieces together as shown.
3. Press seams as shown by the arrows. Where shown by the red circle, twist the center of the seam allowance open loosening the stitches of the fabric at the center seam so the intersecting seam fans out and lays flat to opposite sides. This will relieve the excess bulk.

Back side of unit



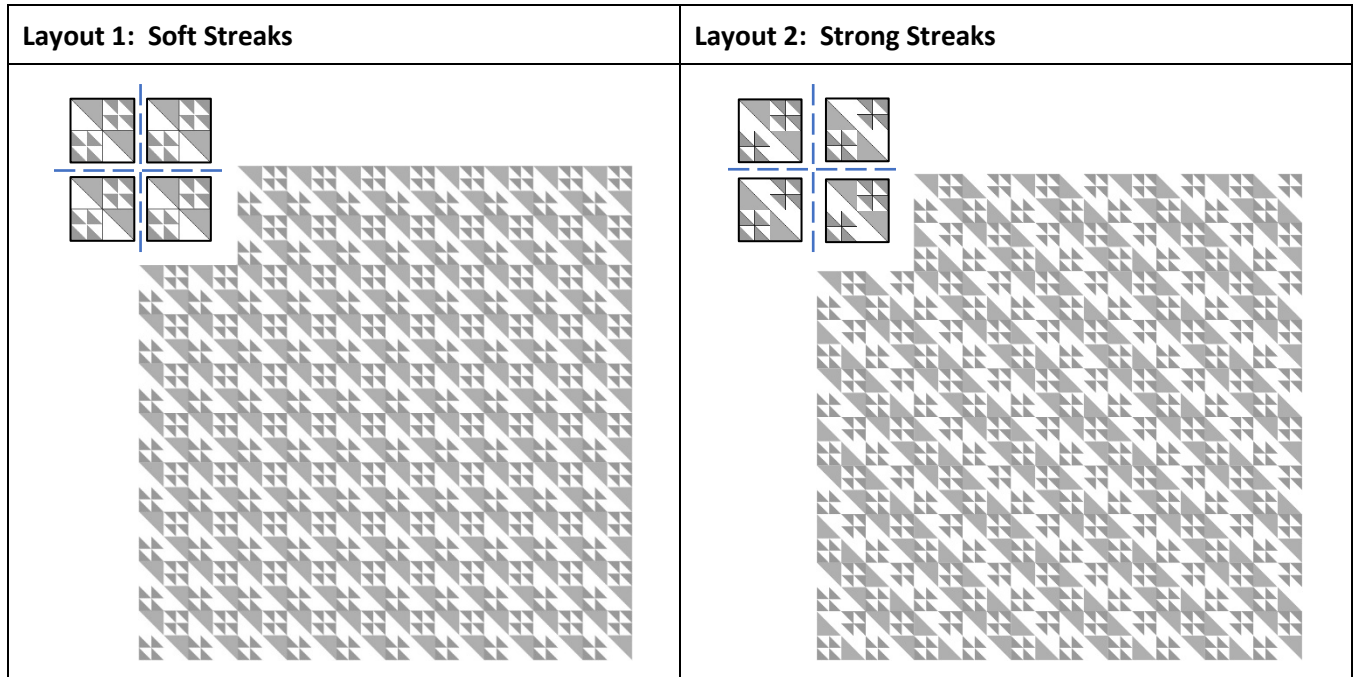
4. This block should measure 6-1/2" x 6-1/2" unfinished. Trim to tidy if necessary.

5. Repeat to make as many blocks as you wish!



The Scrap Buster Quilt Layout Options:

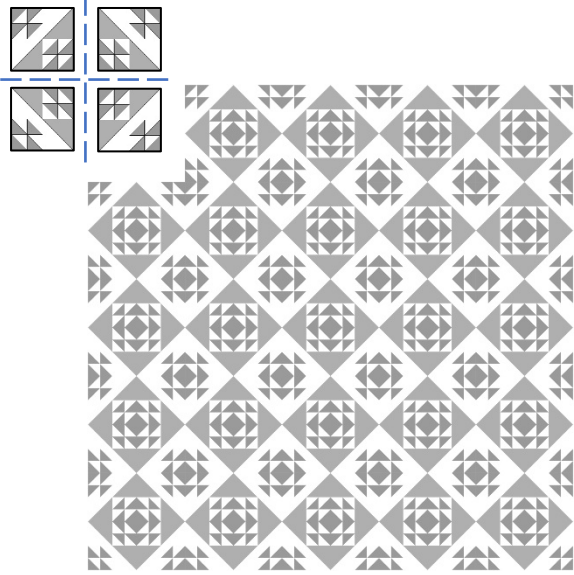
The following quilt layouts shows 100 blocks (10 blocks per row wide x 10 rows long) to demonstrate the pattern formed by the positioning of the **Flock of Geese** blocks. This would be a 60" x 60" finished size center. You can make your quilt any size you wish and add any borders that you wish in order to make a quilt the size that you wish! Of course you can always put the blocks on point too! Let's have fun!



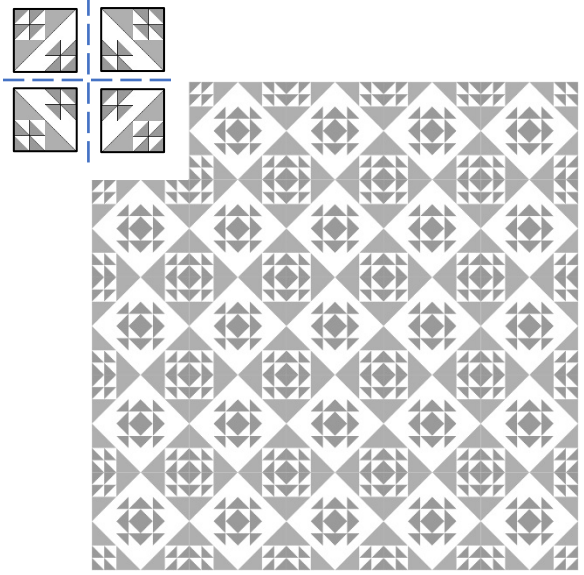
Border Creek Station Pattern Company

• www.bordercreekstation.com •

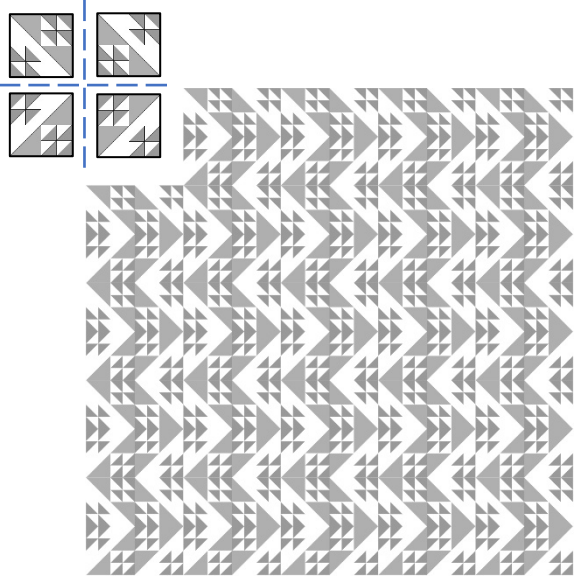
Layout 3: Sunshine & Shadows with light edges



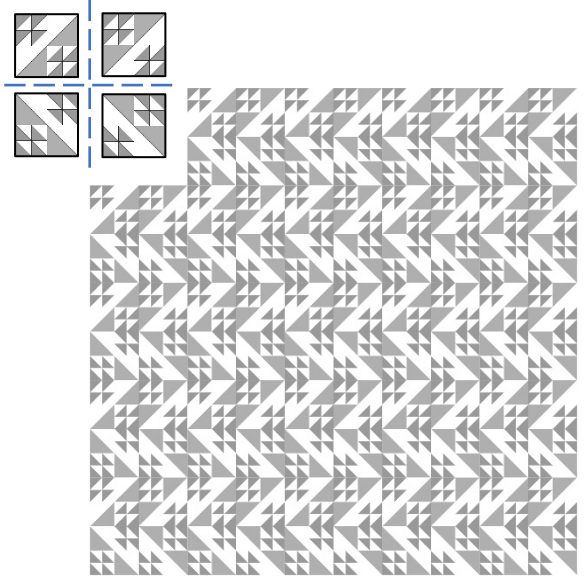
Layout 4: Sunshine & Shadows with dark edges



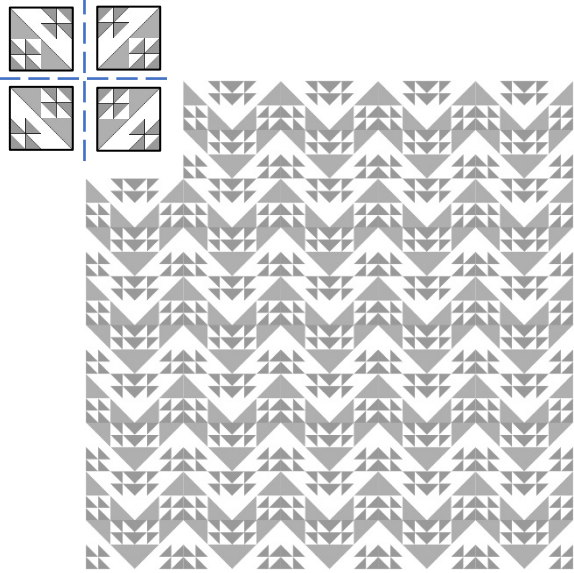
Layout 5: Field and Furrow



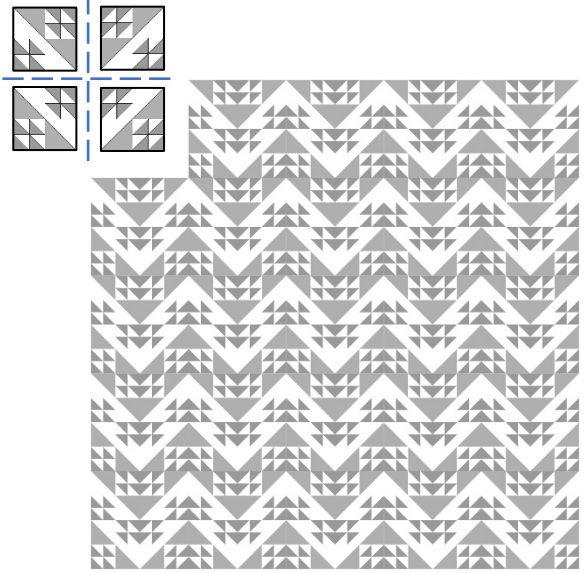
Layout 6: Lightning Streak



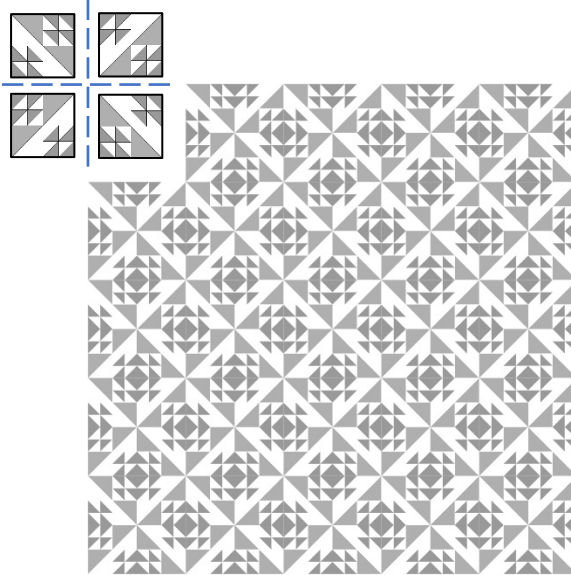
Layout 7: Hills and Valleys with light edges



Layout 8: Hills and Valleys with dark edges



Layout 9: Big Spools



Thank you for sewing along with me on this adventure!



Border Creek Station Pattern Company

• www.bordercreekstation.com •