



Earth Day 2022

Recycle for a Sustainable Future

See page 3

Contents

COVER STORY

Earth Day 2022: Recycle for a Sustainable Future 3

POLICIES, PROCEDURES, AND FORMS UPDATES

Manuals

DMM Revision: Ballot Mail Clarification 5

DMM Revision: Electronic Nicotine Delivery

Systems Update 8

DMM Revision: Money Order Reclamation 8

IMM Revision: Individual Country Listing for France 9

IMM Revision: Individual Country Listing for Latvia 10

IMM Revision: Individual Country Listing for Thailand 10

Publications

Publication 223 Revision: Directives and Forms Update . . . 11

Publication 431 Revision: Changes to Post Office

Box Service and Caller Service Fee Groups 13

Forms

PS Form 3294 Revision: Cash and Stamp Stock Count

and Summary 14

ORGANIZATION INFORMATION

Domestic Mail

Labeling List Changes 16

Human Resources

Coping Mechanisms: April is Stress Awareness Month 39

Information Security

Beware of Ransomware 41

Mailing and Shipping Services

Mail Alert 41

Stamp Services

Pictorial Postmarks Announcement 42

How to Order the First-Day-of-Issue Digital Color or

Traditional Postmarks 43

PULL-OUT INFORMATION

Fraud

Invalid USPS Corporate Account Numbers 17

Missing, Lost, or Stolen U.S. Money Order Forms 18

Missing, Lost, or Stolen Canadian Money Order Forms 24

Verifying U.S. Postal Service Money Orders 26

Counterfeit Canadian Money Order Forms 26

Toll-Free Number Available to Verify Canadian

Money Orders 26

Other Information

Overseas Military/Diplomatic Mail 27

Freely Associated States Restrictions 32

POSTAL BULLETIN 2021 ANNUAL INDEX

2021 Annual Index PB 22589 (1-13-22)

Find the latest in mail and delivery information
and services offered by U.S. Postal®
in the *Postal Bulletin* at
about.usps.com/postal-bulletin

Mail Moment®

Cover Story

Earth Day 2022: Recycle for a Sustainable Future

The United States Postal Service® (USPS®) celebrates Earth Day 2022 by emphasizing our corporate commitment to waste reduction and recycling. Nearly everything in our trash containers can be recycled, which protects the environment and makes good business sense. Last year, our organization saved over \$14 million in landfill disposal costs by recycling.

The Postal Service™ generates large quantities of recyclables, including paper (primarily undeliverable marketing mail), cardboard, plastics, and other materials. Last year, the Postal Service recycled over 176,000 tons of undeliverable mail, which is equivalent to recycling over a half-million wire containers of undeliverable mail.

The Postal Service can recycle at this volume by using backhaul recycling. Backhaul recycling works by returning undeliverable mail generated by our delivery units to their servicing hub where it is consolidated to generate revenue. More than 18,000 facilities currently participate in backhaul recycling.

In honor of Earth Day, here are a few more of our recycling initiatives:

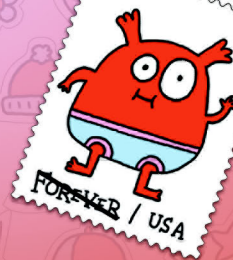
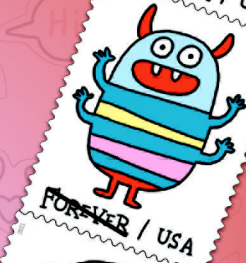
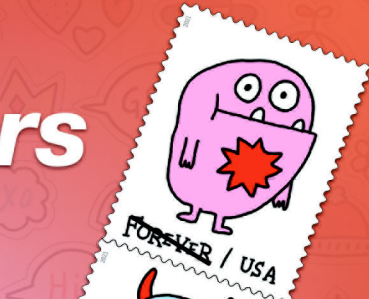
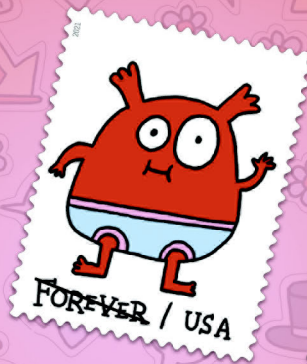
- **USPS recycles plastic wrap.** We receive packages and mail wrapped in plastic wrap every day, which presents another great opportunity for recycling. In 2021, USPS recycled more than 4,700 tons of plastic wrap. This saved more than 3.2 million gallons of oil from being used to manufacture new plastic wrap.

- **USPS has a vast network to recover and recycle electronic waste.** Our cell phones, computers, printers, monitors, and other electronics, including batteries, eventually reach their end of life. In 2021, USPS recycled more than 895 tons of electronic waste, which is equivalent to recycling over 350,000 postal laptop computers.
- **USPS reduces cardboard box purchases and promotes reuse of current stock.** USPS is rolling out the FY 22 HQ Get-It-Right initiative to field personnel to “get back to basics” and reuse cardboard — the goal is to significantly reduce cardboard spend. In 2021, USPS recycled more than 78,000 tons of cardboard, which is equivalent to recycling over 15 million cardboard boxes in a single year. Driving more efficient handling of cardboard stock not only reduces cardboard costs, but also drives recycling revenue.

For more information about USPS recycling opportunities and our other green practices, visit blue.usps.gov/sustainability and about.usps.com/what/corporate-social-responsibility/sustainability.

— *Environmental Affairs and Corporate Sustainability,
Corporate Affairs, 4-7-22*

Set Your Imagination Free with
**Message Monsters
Forever® Stamps**



**ON SALE NATIONWIDE:
SEPTEMBER 24, 2021**

Sold as a full pane.

Policies, Procedures, and Forms Updates

Manuals

DMM Revision: Ballot Mail Clarification

Effective July 10, 2022, the Postal Service™ will revise *Mailing Standards of the United States Postal Service*, Domestic Mail Manual (DMM®), section 703.8.0 and various other sections, to clarify standards for Ballot Mail.

This clarification is to improve awareness and consistency of the Postal Service’s longstanding recommended mailing standards for Ballot Mail. These recommendations have been shared directly with state and local election officials for years, and these revisions to the DMM will provide election officials with a consolidated resource that includes these recommendations. This clarification does not change these recommendations or introduce new requirements.

The Postal Service believes that adherence to these recommendations increases Ballot Mail visibility as ballots move through the network, generally improves processing, and enhances Postal Service customers’ experience. Election officials should follow these recommendations to help ensure that ballots are identified correctly and handled efficiently, providing Postal Service customers with quality service and prompt delivery.

To achieve awareness and consistency, the Postal Service is reorganizing section 703.8.0, and adding longstanding recommendations on mailpiece design (including using the Official Election Mail logo) and outbound ballot mail preparation.

Additionally, the Postal Service is revising various other sections to reflect the changes to 703.8.0. The requirements currently in the DMM, including in section 703.8.0, are being maintained.

Although the Postal Service will not publish this clarification in the DMM until July 10, 2022, the standards are effective immediately.

Mailing Standards of the United States Postal Service, Domestic Mail Manual (DMM)

	*	*	*	*	*
200	Commercial Mail Letters, Cards, Flats, and Parcels				
	*	*	*	*	*
202	Elements on the Face of a Mailpiece				
	*	*	*	*	*

8.0 Facing Identification Mark (FIM)

8.1 Using FIMs

* * * * *

[Revise the text of item e. to read as follows:]

e. Return materials sent under 703.8.0.

* * * * *

600 Basic Standards For All Mailing Services

* * * * *

602 Addressing

* * * * *

5.0 Move Update Standards

* * * * *

5.2 USPS-Approved Methods

* * * * *

[Add item e. to read as follows:]

e. Election Mail, meaning any item mailed to or from authorized election officials and that enables citizens to participate in the voting process (e.g., ballots, voter registration cards, absentee voting applications and polling place notifications), may be mailed using a USPS-approved alternative method with the approval of the National Customer Support Center.

* * * * *

700 Special Standards

703 Nonprofit USPS Marketing Mail and Other Unique Eligibility

* * * * *

[Revise the title and text of 8.0 to read as follows:]

8.0 Ballot Mail

8.1 Definition

8.1.1 Ballot Mail

Ballot Mail consists of any mailpiece sent to or from an authorized election official and containing a live ballot that may be used to cast a vote in an election.

8.1.2 Balloting Materials

Balloting materials are materials sent to or from an authorized election official that facilitate a voter's ability to receive and complete a ballot, including postcard ballot applications, all ballot types (i.e., sample ballots and live ballots), voting instructions, mailing instructions, and return envelopes.

8.2 Prices

8.2.1 Outbound Ballot Mail

Outbound Ballot Mail (i.e., ballots sent from election officials to voters) may be sent at First-Class Mail or USPS Marketing Mail prices.

8.2.2 Return Ballot Mail

Return Ballot Mail (i.e., ballots that voters return to election officials) is sent at First-Class Mail prices, unless a voter opts to pay for a premium service.

8.3 Postage Requirement

8.3.1 Balloting Materials

Except for ballots meeting one of the exceptions under 8.7, balloting materials provided to voters for any election, whether disseminated in hard copy or electronically, must indicate in a prominent location on the material that the proper amount of postage must be paid on return mailings. This information must be included in balloting materials with the marking "First-Class Mail postage must be applied." Alternatively, the marking "Apply First-Class Mail postage here" may be printed in the upper right corner of the address side of the return envelope provided to voters. Approved versions of the markings will also be acceptable in either location.

8.3.2 Ballot Mail

Except for ballots meeting one of the exceptions under 8.7, Ballot Mail must indicate in a prominent location on the mail the specific amount of First-Class Mail postage required for return by mail to election officials.

8.4 Design

Ballot Mail should be mailed as automation compatible letters that bear a unique Intelligent Mail barcode (IMb) with the Delivery Point ZIP Code embedded and Ballot Mail Service Type Identifiers (STIDs).

8.4.1 Ballot Mail Envelope Review

Election officials are encouraged to submit new and previously approved Ballot Mail envelope designs to USPS each election cycle to evaluate compliance with mailing standards and Ballot Mail recommendations. Election officials should consult with Postal Service officials for assistance with mailpiece design, barcode placement, and determining the proper amount of postage required for mailing ballots to voters and the return of ballots to election officials.

8.4.2 Facing Identification Mark (FIM)

The correct facing identification mark (FIM) as described in 202.8.0 must be printed on the address side of Return Ballot Mail envelopes that are provided to voters.

8.4.3 Official Election Mail Logo

The Official Election Mail logo should be used on all outbound and return Ballot Mail. For additional information on the Official Election Mail logo, see Publication 631, *Official Election Mail – Graphic Guidelines and Logos*.

8.5 Preparation

8.5.1 Tag 191

Outbound Ballot Mail mailing containers should have Tag 191, *Domestic and International Mail-in Ballots*, attached.

8.5.2 Postage Statement

The required postage statement should have the "This Is Official Election Mail" checkbox marked for every mailing.

8.5.3 Move Update

Ballot Mail under 8.0 is eligible for USPS-approved alternative methods to meet the Move Update standard under 602.5.0 when approved by the National Customer Support Center.

8.6 Enter and Deposit

8.6.1 Verification

Except for ballots meeting one of the exceptions under 8.7, a complete sample mailpiece must accompany each mailing.

8.6.2 Entry

Outbound Ballot Mail mailings should not be commingled with non-Ballot Mail pieces for mail acceptance and entry.

8.7 Exceptions to Standards

An exception to the postage, marking, and verification standards in 8.3 and 8.6.1 may be granted for one of the following reasons:

- a. Ballots are mailed under 8.8.
- b. Ballots are prepared and mailed under 8.9.
- c. Ballots are returned under 505.1.0.
- d. A postage due account has been established to guarantee the payment of return postage.
- e. Prepayment of return postage is made by stamps, meter, or Permit Reply Mail.

8.8 Special Exemption

8.8.1 Definition

Balloting materials may be sent through the mail without prepayment of postage to enable persons in the following categories to apply for registration and vote by absentee

ballot when absent from the place of voting residence and otherwise eligible to vote as an absentee:

- a. Members of the Armed Forces in active service and their spouses and dependents.
- b. Members of the U.S. Merchant Marine and their spouses and dependents.
- c. U.S. citizens residing outside the territorial limits of the United States and the District of Columbia and their spouses and dependents residing with or accompanying them.

8.8.2 Eligibility

To be mailable without prepayment of postage, the balloting materials must be deposited at a U.S. Post Office, an overseas U.S. military Post Office (APO/FPO), a Diplomatic Post Office (DPO), or an American Embassy or American Consulate.

8.8.3 Between Officials

Balloting materials may be mailed between state and local election officials, individually or in bulk, without prepayment of postage. Packages of materials mailed in bulk must bear an address label as described in 8.8.

8.8.4 Elections Affected

Materials may be for any general election of electors for U.S. President and U.S. Vice President, or of senators and representatives in Congress, and other general, primary, and special elections.

8.8.5 Envelope

The envelope used to send balloting materials and the envelope supplied for return of a ballot must have printed across the face the words “Official Absentee Balloting Material – First-Class Mail” (or similar wording required by state law) in a rectangular box. Immediately below, the words “No Postage Necessary in the U.S. Mail – DMM 703.8.0” must be printed. Envelopes previously approved with the citation “DMM E080” must not be rejected. In the

upper right corner of the envelope, in a rectangular box, the words “U.S. Postage Paid, 39 USC 3406” must be printed. An appropriate inscription or blank spaces for the return address of the sender must be shown in the upper left corner (see Exhibit 8.8.6).

Exhibit 8.8.6 Ballot Mail Formats – Envelope

[Add graphic from current Exhibit 8.2.5.]

8.8.7 Postcard

The federal voting registration postcard application must be approximately 5 by 8 inches. The design shown in Exhibit 8.8.7 must be printed on the address side of the card.

Exhibit 8.8.7 Balloting Material Formats – Postcard

[Add graphic from current Exhibit 8.2.6.]

8.8.8 Facing Identification Mark (FIM)

The correct facing identification mark (FIM) as described in 202.8.0 must be printed on the address side of envelopes and cards.

8.9 Priority Mail Express Label 11-DOD

Absent overseas uniformed services voters, as defined in 52 U.S.C. § 20304(d), may return absentee ballots from the following locations by using Priority Mail Express Label 11-DOD without prepaying postage: Overseas APO/FPO military locations; DPO locations; or Department of State (DOS) locations. Absentee ballots prepared with Label 11-DOD affixed for return by absent overseas uniformed services voters from overseas APO/FPO military locations and DPO/DOS locations are exempt from the marking and verification standards in 8.3 and 8.6.1.

* * * * *

The Postal Service will incorporate these revisions into the next edition of the online DMM, which is available via Postal Explorer® at pe.usps.com.

– Product Classification,
Product Solutions, 4-7-22

DMM Revision: Electronic Nicotine Delivery Systems Update

Effective July 10, 2022, the Postal Service™ will revise *Mailing Standards of the United States Postal Service*, Domestic Mail Manual (DMM®), sections 503.6.2 and 601.8.3, to add references to Electronic Nicotine Delivery Systems (ENDS).

The Postal Service will update section 503.6.2, regarding mailers requesting return receipt service, to include ENDS among types of certain restricted mailings, and will revise section 601.8.3 to include ENDS in the examples listed for the types of restricted matter.

Although the Postal Service will not publish these revisions in the DMM until July 10, 2022, the standards are effective immediately.

Mailing Standards of the United States Postal Service, Domestic Mail Manual (DMM)

* * * * *

500 Additional Mailing Services

503 Extra Services

* * * * *

6.0 Return Receipt

* * * * *

6.2 Obtaining Service

[Revise the text of 6.2 to read as follows:]

Mailers requesting return receipt service at the time of mailing using PS Form 3811 must complete the mailer's entries on the form, including the article identification number, and attach the form onto the article. The mailpiece must bear the return address of the mailer or mailer's agent. The name

and address of the person or organization to which the return receipt is to be returned must be that of the mailer or the mailer's agent, except for certain restricted mailings of electronic nicotine delivery systems (ENDS), cigarettes, and smokeless tobacco under Publication 52, sections 473.33 and 473.53, that require a mailer to address the sender's address block of the return receipt to the Pricing and Classification Service Center (PCSC) at PCSC, PACT Mailing Office (see 608.8.4.1 for address).

* * * * *

600 Basic Standards for All Mailing Services

* * * * *

601 Mailability

* * * * *

8.0 Hazardous, Restricted, and Perishable Mail

* * * * *

8.3 Restricted Matter

* * * * *

[Revise the text of item i. to read as follows:]

- i. Cigarettes, smokeless tobacco, and electronic nicotine delivery systems (ENDS).

* * * * *

The Postal Service will incorporate these revisions into the next edition of the online DMM, which is available via Postal Explorer® at pe.usps.com.

— *Product Classification,
Product Solutions, 4-7-22*

DMM Revision: Money Order Reclamation

Effective July 10, 2022, the Postal Service™ will revise *Mailing Standards of the United States Postal Service*, Domestic Mail Manual (DMM®), section 509.3.4.4, to clarify all material circumstances under which the Postal Service has the right to perform a money order reclamation.

The Postal Service has experienced an increase in counterfeit, fraud, and other losses related to money orders.

Although the Postal Service will not publish this revision in the DMM until July 10, 2022, the standards are effective immediately.

Mailing Standards of the United States Postal Service, Domestic Mail Manual (DMM)

* * * * *

500 Additional Mailing Services

* * * * *

509 Other Services

* * * * *

3.0 Money Orders

* * * * *

3.4 Federal Reserve System

* * * * *

3.4.4 Reclamation

[Revise the text of 3.4.4 to read as follows:]

The postmaster general has the right to demand refund from the presenting bank of the amount of a paid money order if, after payment, the money order is discovered to be counterfeit, forged, or fraudulent; found to be stolen or lost, or to have a forged or unauthorized endorsement; or to contain any material defect or alteration not discovered on examination. Such right includes, but is not limited to, the right to make reclamation of the amount by which a genuine money order with a proper and authorized endorsement has been raised. Such right must be exercised within a rea-

sonable time after the postmaster general discovers that the money order is counterfeit, forged, or fraudulent, stolen or lost, bears a forged or unauthorized endorsement, or is otherwise defective. If refund is not made by the presenting bank within 60 days after demand, the postmaster general takes such actions as may be necessary to protect the interests of the United States.

* * * * *

The Postal Service will incorporate this revision into the July 10, 2022, edition of the online DMM, which is available via Postal Explorer® at pe.usps.com.

— Product Classification, Product Solutions, 4-7-22

IMM Revision: Individual Country Listing for France

Effective April 7, 2022, the Postal Service™ is revising the Individual Country Listing for France in *Mailing Standards of the United States Postal Service*, International Mail Manual (IMM®) to note value-added tax (VAT) rules applicable to e-commerce.

This revision is based on a formal request that La Poste (the designated operator of France) made through the Universal Postal Union via *International Bureau Circular* 197, dated December 6, 2021, and a consultation with La Poste on December 21, 2021.

Mailing Standards of the United States Postal Service, International Mail Manual (IMM)

* * * * *

Individual Country Listings

* * * * *

France

Country Conditions for Mailing

* * * * *

Observations

[Add a new observation to read as follows:]

- 8. Value-added tax (VAT) must be collected and paid by online marketplace operators who broker remote sales for all goods, regardless of value, imported into France. Also, for goods valued at 150 EUR or more, each online marketplace operator must obtain a French VAT identification number from the French tax authorities. For additional information and to obtain a French VAT identification number, contact the appropriate authorities as follows:

SERVICE IMPOTS DES ENTREPRISES ETRANG-ERES NOISY-LE-GRAND (SIEE)
10 CENTRAL STREET
ASD 20011
93465 NOISY-LE-GRAND CEDEX
FRANCE

see.dinr@dgfip.finances.gouv.fr

+33 1. 1 72 95 20 31 (Telephone: Monday Through Friday 09:00–16:00)

* * * * *

Although effective April 7, 2022, the Postal Service will incorporate this revision into a later edition of the online IMM, which is available via Postal Explorer® at pe.usps.com.

— Product Classification, Product Solutions, 4-7-22

IMM Revision: Individual Country Listing for Latvia

Effective April 7, 2022, the Postal Service™ is revising the Individual Country Listing for Latvia in *Mailing Standards of the United States Postal Service*, International Mail Manual (IMM®) to note that the value-added tax (VAT) exemption is abolished.

This revision is based on a consultation with Latvijas Pasts (the designated operator of Latvia) on March 7, 2022.

Mailing Standards of the United States Postal Service, International Mail Manual (IMM)

* * * * *

Individual Country Listings

* * * * *

Latvia

Country Conditions for Mailing

* * * * *

Observations

[Number the current entry as “1” and then add a new entry to read as follows:]

- As of July 1, 2021, the value-added tax (VAT) exemption is abolished on all imported goods. For more information regarding the European Union’s VAT rules, visit ec.europa.eu/taxation_customs/business/vat/vat-e-commerce_en.

* * * * *

Although effective April 7, 2022, the Postal Service will incorporate this revision into the next edition of the online IMM, which is available via Postal Explorer® at pe.usps.com.

— Product Classification,
Product Solutions, 4-7-22

IMM Revision: Individual Country Listing for Thailand

Effective April 7, 2022, the Postal Service™ is revising the Individual Country Listing for Thailand in *Mailing Standards of the United States Postal Service*, International Mail Manual (IMM®) to reflect an additional prohibition.

This revision is based on a formal request that Thailand Post (the designated operator of Thailand) made through the Universal Postal Union via *International Bureau Circular* 29, dated February 21, 2022.

Mailing Standards of the United States Postal Service, International Mail Manual (IMM)

* * * * *

Individual Country Listings

* * * * *

Thailand

Country Conditions for Mailing

Prohibitions

* * * * *

[Add the following entry in alphabetical order:]

Narcotics and psychotropic substances.

* * * * *

Although effective April 7, 2022, the Postal Service will incorporate this revision into the next edition of the online IMM, which is available via Postal Explorer® at pe.usps.com.

— Product Classification,
Product Solutions, 4-7-22

Publications

Publication 223 Revision: Directives and Forms Update

Effective March 31, 2022, Publication 223, *Directives and Forms Catalog*, is revised to include current information for the items noted in this article. See Chapter 1 of Publication 223 for information on how to order directives and forms. Publication 223 is available online at about.usps.com/publications/pub223.pdf.

New

- MI AS-280-2021-7, *Integrated Emergency Management Supporting Field Business Continuity*.
- MI AS-510-2021-6, *Allocating and Renovating Headquarters Space*.
- MI AS-800-2022-1, *Cloud and Electronic Mail Security*.
- MI AS-800-2022-2, *Automated Security Testing Requirements for USPS-Developed Applications*.
- MI EL-670-2021-4, *Providing Communication Accommodations to Employees and Applicants Who Are Deaf or Hard of Hearing*.
- MI EL-740-2021-3, *Training Development Request Process*.
- MI FM-640-2021-3, *Verifying Payment Card Industry Compliance for Service Provider Engagement*.
- MI FM-640-2021-4, *Expenses for an Unanticipated Crisis or Catastrophic Event*.
- MOP FI-09-03-2021, *Policy Memo — Statistical Programs Letter # 1, Fiscal Year (FY) 2022: CCCS, RCCS, TRACS, IOCS, ODIS-RPW, and SPM*.
- MOP SM-01-24-2022, *Interim Supplemental Guidance to Supplying Principles and Practices and Other Directives, COVID-19 Test Kit Fulfillment and Mailing Initiative*.
- PUB 123, *Domestic Business Reply Mail Guide*.
- PS 971-P, *Certificate of Transfer for an APO with RMPOs, or for a Postmaster or Manager with Multiple Retail Units (i.e., Classified Stations or Branches)*.
- PS 3541-9, *Postage Statement — Periodicals — One Issue or One Edition — Periodicals Pending Authorization*.
- PS 4615-E, *PACT Act Application for Business or Regulatory Purposes Exception — ENDS*.
- PS 4615-EM, *Mailer Information Worksheet for PS Form 4615-E (PACT Act — ENDS)*.
- PS 4615-ER, *Recipient Information Worksheet for PS Form 4615-E (PACT Act — ENDS)*.

Revised

- HBK EL-903, *Agreement Between the USPS and the National Postal Mail Handlers Union, A Division of the Laborers' International Union of North America, AFL-CIO, 2019–2022*.
- HBK F-101, *Field Accounting Procedures*.
- KIT 600, *Your 2022 Official Election Mail Kit*.
- LAB 33, *Report Mail Theft, Tampering, or Vandalism of This Mailbox*.
- LAB 33-S, *Report Mail Theft, Tampering, or Vandalism of This Mailbox (Spanish)*.
- MAN ASM, *Administrative Support Manual*.
- MAN DMM, *Mailing Standards of the United States Postal Service, Domestic Mail Manual*.
- MAN DMM 100, *A Customer's Guide to Mailing*.
- MAN IMM, *Mailing Standards of the United States Postal Service, International Mail Manual*.
- MAN POM, *Postal Operations Manual*.
- NOT 123, *Price List*.
- POS 221, *Expedited Packaging Supplies Available at Retail*.
- PUB 52, *Hazardous, Restricted, and Perishable Mail*.
- PUB 223, *Directives and Forms Catalog*.
- PUB 530, *Combined Federal Campaign Operational Guidelines*.
- PUB 631, *Official Election Mail: Graphic Guidelines and Logos*.
- PUB 632, *State and Local Election Mail — User's Guide*.
- PUB 685, *Publication for Streamlined Mail Acceptance for Letters and Flats*.
- PS 8-A, *Request for a New Field Finance Number*.
- PS 8-B, *Request to Modify or Discontinue a Field Finance Number*.
- PS 1007, *Employee Debt Modification Request*.
- PS 1314-F, *Rural Carrier FMLA Certificate*.
- PS 1750, *Employee Evaluation and/or Probationary Report*.
- PS 2025, *Contract Personnel Questionnaire*.
- PS 2181-D, *Disclosure and Authorization for Consumer Reports and Investigative Consumer Reports*.

- PS 3541-1, *Postage Statement — Periodicals — One Issue or One Edition.*
- PS 3541-3, *Postage Statement — Periodicals — One Issue or One Edition — Outside County.*
- PS 3541-5, *Postage Statement — Periodicals — One Issue or One Edition — Outside County.*
- PS 3541-7, *Postage Statement — Periodicals — One Issue or One Edition — Outside County.*
- PS 3600-FCM1, *Postage Statement — First-Class Mail and First-Class Package Service.*
- PS 3600-FCM3, *Postage Statement — First-Class Mail and First-Class Package Service — Nonautomation Prices.*
- PS 3600-FCM5, *Postage Statement — First-Class Mail and First-Class Package Service — Roundtrip DVD, CD, or Other Disc Mail.*
- PS 3600-PM1, *Postage Statement — Priority Mail — Permit Imprint.*
- PS 3600-PM3, *Postage Statement — Priority Mail — Permit Imprint — Com. Base/Com. Plus — Regional Rate Box.*
- PS 3600-PM5, *Postage Statement — Priority Mail — Permit Imprint — Negotiated Service Agreement (NSA).*
- PS 3600-PM7, *Postage Statement — Priority Mail — Permit Imprint — Negotiated Service Agreement (NSA).*
- PS 3600-PM9, *Postage Statement — Priority Mail — Open and Distribute — Negotiated Service Agreement (NSA).*
- PS 3600-PM11, *Postage Statement — Priority Mail — Open and Distribute — Commercial Plus.*
- PS 3602-N1, *Postage Statement — Nonprofit USPS Marketing Mail.*
- PS 3602-N3, *Postage Statement — Nonprofit USPS Marketing Mail — Nonautomation Letters.*
- PS 3602-N5, *Postage Statement — Nonprofit USPS Marketing Mail — Carrier Route Letters.*
- PS 3602-N7, *Postage Statement — Nonprofit USPS Marketing Mail — Nonautomation Flats.*
- PS 3602-N9, *Postage Statement — Nonprofit USPS Marketing Mail — Carrier Route Flats.*
- PS 3602-N11, *Postage Statement — Nonprofit USPS Marketing Mail — Marketing Parcels.*
- PS 3602-N13, *Postage Statement — Nonprofit USPS Marketing Mail — Extra Services and Fees.*
- PS 3602-R1, *Postage Statement — USPS Marketing Mail.*
- PS 3602-R3, *Postage Statement — USPS Marketing Mail — Nonautomation Letters.*
- PS 3602-R5, *Postage Statement — USPS Marketing Mail — Carrier Route Letters.*
- PS 3602-R7, *Postage Statement — USPS Marketing Mail — Nonautomation Flats.*
- PS 3602-R9, *Postage Statement — USPS Marketing Mail — Carrier Route Flats.*
- PS 3602-R11, *Postage Statement — USPS Marketing Mail — Marketing Parcels.*
- PS 3605-R1, *Postage Statement — Package Services and Parcel Select.*
- PS 3605-R3, *Postage Statement — Package Services — Bound Printer Matter.*
- PS 3605-R5, *Postage Statement — Package Services — Library Mail and Media Mail.*
- PS 3605-R7, *Postage Statement — Parcel Select.*
- PS 3605-R9, *Postage Statement — Package Services and Parcel Select — Extra Services and Fees.*
- PS 3700-1, *Postage Statement — International Mail.*
- PS 3700-3, *Postage Statement — International Mail — FCPIS — Permit Imprint.*
- PS 3700-5, *Postage Statement — International Mail — ISAL — Permit Imprint.*
- PS 3700-7, *Postage Statement — International Mail — ISAL — Permit Imprint.*
- PS 3700-9, *Postage Statement — International Mail — IPA — Permit Imprint.*
- PS 3700-11, *Postage Statement — International Mail — IPA — Permit Imprint.*
- PS 3700-13, *Postage Statement — International Mail — PMI — Permit Imprint.*
- PS 3700-15, *Postage Statement — International Mail — PMI — Permit Imprint.*
- PS 3700-17, *Postage Statement — International Mail — PMEI — Permit Imprint.*
- PS 3700-19, *Postage Statement — International Mail — Commercial ePacket — Permit Imprint.*
- PS 3700-21, *Postage Statement — International Mail — Extra Services and Fees.*
- PS 4615, *PACT Act Application for Business or Regulatory Purposes Exception — Cigarettes and Smokeless Tobacco.*
- PS 4616, *PACT Act Application for Consumer Testing or Public Health Exception.*
- PS 5659, *Daily Passport Application (DS-11) Transmittal.*
- PS 6710, *Communication Accommodation Request Form.*

- PS 6711, *Communication Accommodation Plan for Employees Who Are Deaf or Hard of Hearing.*
- PS 8105-B, *Suspicious Transaction Report (STR).*
- PS 8184, *National and International Service Center (ISC) Zone Charts Matrix & Labeling Lists Product Order Form.*

Obsolete

PSIN	Ed. Date	Title	Replaced By
MI AS-280-2018-1	1/18	<i>Integrated Emergency Management Supporting Field Business Continuity</i>	MI AS-280-2021-7
MI AS-510-2020-5	10/20	<i>Allocating and Renovating Headquarters Space</i>	MI AS-510-2021-6
MI EL-670-2013-6	9/13	<i>Providing Communication Accommodations to Employees and Applicants Who Are Deaf or Hard of Hearing</i>	MI EL-670-2021-4
MI EL-740-2021-1	10/17	<i>Training Development Request Process</i>	MI EL-740-2021-3
MI FM-640-2021-1	3/21	<i>Verifying Payment Card Industry Compliance for Service Provider Engagement</i>	MI FM-640-2021-3
PUB 560	1/03	<i>Associate Supervisor Program Applicant Brochure</i>	N/A
PUB 561	1/03	<i>Associate Supervisor Program Coordinator's Booklet</i>	N/A
PS 1516	8/98	<i>Hold Harmless Agreement</i>	N/A

— Brand and Policy,
Corporate Communications, 4-7-22

Publication 431 Revision: Changes to Post Office Box Service and Caller Service Fee Groups

Effective April 7, 2022, Publication 431, *Post Office Box Service and Caller Service Fee Groups*, is revised to include the following changes.

Publication 431, *Post Office Box Service and Caller Service Fee Groups*

* * * * *

[Delete the following entries:]

ZIP Code	Fee Group
04629	4
50254	7
52316B	6
93421C	3

* * * * *

The online version of Publication 431 is dated July 2013. Publication 431 is currently available on the Postal Service™ PolicyNet website (blue.usps.gov/cpim):

- Go to blue.usps.gov.
- In the left-hand column, click *Essential Links*, and then click *PolicyNet*.
- Go to the right-hand side under “Published Forms and Directives.”
- Click *Publications*.

Offices with WebBATS Manager/Supervisor access can view current Publication 431 information by going to the WebBATS Edit Facility Information page, as follows:

1. Go to the WebBATS main menu, and select Utility> Facility>Edit Facility option.
2. View the Fee Group field on the Edit Facility Information page.

— Post Office Operations,
Retail and Post Office Operations, 4-7-22

Forms

PS Form 3294 Revision: Cash and Stamp Stock Count and Summary

Effective April 2022, the Postal Service™ revised PS Form 3294, *Cash and Stamp Stock Count and Summary*, to remove all references to PS Form 571, *Discrepancy of \$100 or More in Financial Responsibility*.

PS Form 571 was obsoleted in September 2021 because the information that had been captured by the form is now captured by a comments field within the Retail Systems Software (RSS) and e1412 reporting technologies, as noted in the article titled “PS Form 571 is No Longer Required for Reporting Overages or Shortages” in *Postal Bulletin 22582* (10-7-21, page 6).

PS Form 3294 is still required to document cash and stamp counts.

The April 2022 edition of PS Form 3294 is available on the PolicyNet website:

- Go to blue.usps.gov.
- In the left-hand column, click *Essential Links*, and then click *PolicyNet*.
- Go to the right-hand side under “Published Forms and Directives,” click *Forms*, and then click on the range 3000–3999.
- Scroll down to the form entry and click the PDF icon.

The direct URL for the Postal Service PolicyNet website is blue.usps.gov/cpim. PS Form 3294 is available only on the PolicyNet website; it is no longer available from the Material Distribution Center.

— Revenue and Field Accounting,
Controller, 4-7-22

GEORGE MORRISON

1919–2000
American Landscape Painter
and Sculptor



X1111

X1111

Organization Information

Domestic Mail

Labeling List Changes

Effective May 1, 2022, the Postal Service™ will revise Labeling List(s) L006, L007, L012, and L606 to reflect changes in mail processing operations. Mailers are expected to label according to these revised lists for mailings inducted on or after the May 1, 2022, effective date through the June 30, 2022, expiration date.

Labeling Lists

* * * * *

L006 5-Digit FSS Scheme — Periodicals, Standard Mail, and Package Services Flats in Bundles

Changes

Column A Destination ZIP Codes	Column B Scheme Bundle/Container Placard (Change From)	Column C Facility Container Placard (Change From)	Column B Scheme Bundle/Container Placard (Change To)	Column C Facility Container Placard (Change To)
18901	FSS DOYLESTOWN PA 18901	FSS NDC PHILADELPHIA PA 192	FSS DOYLESTOWN PA 18901	FSS PHILADELPHIA PA 190
18902	FSS DOYLESTOWN PA 18901	FSS NDC PHILADELPHIA PA 192	FSS DOYLESTOWN PA 18901	FSS PHILADELPHIA PA 190
18914	FSS NEWTOWN PA 18940	FSS NDC PHILADELPHIA PA 192	FSS NEWTOWN PA 18940	FSS PHILADELPHIA PA 190
18938	FSS NEW HOPE PA 18938	FSS NDC PHILADELPHIA PA 192	FSS NEW HOPE PA 18938	FSS PHILADELPHIA PA 190
18940	FSS NEWTOWN PA 18940	FSS NDC PHILADELPHIA PA 192	FSS NEWTOWN PA 18940	FSS PHILADELPHIA PA 190
18964	FSS NEWTOWN PA 18940	FSS NDC PHILADELPHIA PA 192	FSS NEWTOWN PA 18940	FSS PHILADELPHIA PA 190
18969	FSS TELFORD PA 18969	FSS NDC PHILADELPHIA PA 192	FSS TELFORD PA 18969	FSS PHILADELPHIA PA 190
18974	FSS NEW HOPE PA 18938	FSS NDC PHILADELPHIA PA 192	FSS NEW HOPE PA 18938	FSS PHILADELPHIA PA 190
19044	FSS HORSHAM PA 19044	FSS NDC PHILADELPHIA PA 192	FSS HORSHAM PA 19044	FSS PHILADELPHIA PA 190
19046	FSS HORSHAM PA 19044	FSS NDC PHILADELPHIA PA 192	FSS HORSHAM PA 19044	FSS PHILADELPHIA PA 190
19047	FSS LANGHORNE PA 19047	FSS NDC PHILADELPHIA PA 192	FSS LANGHORNE PA 19047	FSS PHILADELPHIA PA 190
19053	FSS LANGHORNE PA 19047	FSS NDC PHILADELPHIA PA 192	FSS LANGHORNE PA 19047	FSS PHILADELPHIA PA 190
19054	FSS LEVITTOWN PA 19054	FSS NDC PHILADELPHIA PA 192	FSS LEVITTOWN PA 19054	FSS PHILADELPHIA PA 190
19055	FSS LEVITTOWN PA 19054	FSS NDC PHILADELPHIA PA 192	FSS LEVITTOWN PA 19054	FSS PHILADELPHIA PA 190
19056	FSS LEVITTOWN PA 19054	FSS NDC PHILADELPHIA PA 192	FSS LEVITTOWN PA 19054	FSS PHILADELPHIA PA 190
19057	FSS LEVITTOWN PA 19054	FSS NDC PHILADELPHIA PA 192	FSS LEVITTOWN PA 19054	FSS PHILADELPHIA PA 190
19067	FSS MORRISVILLE PA 19067	FSS NDC PHILADELPHIA PA 192	FSS MORRISVILLE PA 19067	FSS PHILADELPHIA PA 190
19090	FSS HORSHAM PA 19044	FSS NDC PHILADELPHIA PA 192	FSS HORSHAM PA 19044	FSS PHILADELPHIA PA 190
19116	FSS PHILADELPHIA PA 19116	FSS NDC PHILADELPHIA PA 192	FSS PHILADELPHIA PA 19116	FSS PHILADELPHIA PA 190
19154	FSS PHILADELPHIA PA 19116	FSS NDC PHILADELPHIA PA 192	FSS PHILADELPHIA PA 19116	FSS PHILADELPHIA PA 190
19422	FSS BLUE BELL PA 19422	FSS NDC PHILADELPHIA PA 192	FSS BLUE BELL PA 19422	FSS PHILADELPHIA PA 190
19425	FSS BLUE BELL PA 19422	FSS NDC PHILADELPHIA PA 192	FSS BLUE BELL PA 19422	FSS PHILADELPHIA PA 190

Pull-Out Information

Fraud

Invalid USPS Corporate Account Numbers

Provide this listing to Contract Postal Units and acceptance clerks in non-POS locations without intranet access to validate a USPS Corporate Account (USPSCA) number online. For all other locations, online USPSCA validation is preferred. This list supersedes all previous notices, which you must recycle.

Acceptance clerks must not accept Priority Mail Express® shipments bearing an invalid USPSCA number in the “Payment by Account” or “Agreement Number” section of the label or form.

Note: The first 6 digits of a 9-digit Custom Designed Service and Next Day Pickup Agreement make up the Corporate Account Number.

018008	056022	105412	185061	331683	452221	531358	570109	730128	741623	914017	931682	995342
019667	060406	107195	212410	333831	452387	531525	571018	731379	741737	915001	932009	997115
027122	066110	108789	257111	337154	480019	531613	600114	731410	744092	915603	940191	998012
029101	071065	115846	295198	372215	483990	532467	605640	731462	747016	920001	941813	
029643	077014	148371	305003	381555	489434	551100	662587	731574	770108	921465	968541	
031070	078203	152048	306424	402274	490713	553056	666370	738004	782161	921711	980666	
038477	080117	152918	329001	402472	490714	553634	672409	740497	840623	924276	981985	
041008	093458	153034	330718	441425	491114	553933	681002	741387	847067	926488	982297	
044009	098680	174072	330825	443068	492125	554074	701069	741576	900544	927890	982515	

— Product Information Requirements, Mail Entry and Payment Technology, 4-7-22

Missing, Lost, or Stolen U.S. Money Order Forms

Do Not Cash — Upon Receipt, Notify Local Postal Inspectors

Provide this listing to all Postal Service™ employees responsible for accepting and cashing postal money orders. Destroy all interim notices when the numbers listed appear in the *Postal Bulletin*. The new money order serial

numbers consist of the first 10 digits. The eleventh digit is a check digit only.

Do not cash outdated money orders **104 151 601 to 692 600 000**. Advise holders to send invalid money orders to Canada Post Corporation, Ottawa, Canada K1A 0B1. Check for altered dollar amounts by holding money orders to the light.

010 001 0200	to	0299	044 087 3457	to	3499	084 478 3920	to	3999	176 281 7963	to	7999
010 504 1932	to	1999	044 087 4000	to	4099	086 000 8271	to	8299	176 731 6586	to	6599
011 582 1889	to	1899	044 226 2487	to	2512	086 798 3840	to	3849	178 254 5000	to	9999
011 588 2900	to	3099	044 306 4200	to	4299	088 404 4472	to	4499	178 881 9900	to	9999
012 441 0784	to	0799	044 306 4370	to	4599	088 404 5584	to	5699	180 031 2089	to	2098
012 579 5675	to	5699	045 524 4121	to	4298	088 757 8688	to	8699	180 403 7723	to	7741
013 289 6176	to	6199	046 800 9870	to	9899	088 757 9400	to	9499	180 428 4580	to	0599
013 610 0014	to	0099	047 352 4000	to	4099	089 358 2248	to	2257	182 368 7544	to	0599
014 932 1000	to	1099	048 383 7650	to	7659	090 663 9678	to	9684	182 475 3229	to	3258
014 972 0800	to	0899	048 396 3647	to	3699	091 818 0071	to	0099	182 475 3904	to	3933
015 363 0065	to	0099	051 142 0755	to	0799	093 106 9346	to	9355	182 631 0031	to	0099
017 028 3200	to	3299	051 774 8857	to	8899	093 203 0500	to	0599	182 911 6539	to	6600
018 569 5333	to	5399	051 781 2875	to	2885	093 684 3630	to	3699	184 218 2760	to	2799
018 986 5264	to	5299	051 977 7010	to	7023	094 081 5074	to	5099	185 828 1474	to	1499
019 518 2814	to	2899	052 058 7115	to	7199	094 216 2555	to	2599	186 132 7583	to	0599
020 698 5159	to	5199	054 450 1130	to	1167	094 580 7062	to	7099	186 629 0589	to	0599
020 844 7307	to	7399	057 670 0563	to	0599	094 639 4200	to	4299	187 184 6177	to	0199
020 972 8948	to	8999	058 187 3836	to	3899	095 070 7186	to	7199	187 323 8200	to	8299
022 021 9110	to	9181	058 523 3003	to	3099	095 076 8300	to	8399	187 441 6080	to	6099
022 037 1411	to	1499	058 591 1153	to	1299	095 354 6864	to	6899	188 831 6774	to	6799
022 527 9201	to	9210	058 895 3746	to	3799	097 224 1350	to	1599	188 835 6370	to	6399
022 529 1882	to	1899	059 986 0814	to	0899	100 160 3800	to	3899	189 083 1064	to	1099
023 637 7169	to	7199	060 406 7650	to	7699	104 667 6400	to	6499	189 660 9583	to	9599
024 380 4100	to	4199	063 491 8122	to	8199	104 876 8937	to	8999	191 179 0377	to	0399
024 496 6870	to	6896	063 916 9968	to	9999	112 049 4413	to	4499	192 050 5762	to	5781
025 092 0987	to	0999	064 091 4500	to	4599	112 870 9765	to	9799	194 456 8600	to	0699
025 369 5535	to	5599	065 170 0471	to	0499	113 319 2000	to	2099	195 194 6881	to	6899
025 729 1151	to	1199	065 255 7909	to	7999	114 402 3850	to	3899	195 874 1112	to	1199
025 729 1643	to	1799	065 392 6345	to	6399	114 866 5368	to	5397	196 979 0524	to	0599
026 492 3180	to	3199	066 099 2014	to	2099	116 154 2800	to	2899	197 244 6100	to	6199
027 361 0430	to	0499	066 648 2880	to	2899	116 986 4400	to	4499	197 244 6300	to	6399
027 369 4482	to	4495	066 787 3639	to	3699	117 175 1647	to	5169	197 244 6400	to	6499
027 671 8762	to	8776	066 845 7500	to	9999	117 951 4687	to	4699	197 244 6500	to	6599
027 787 9886	to	9899	067 093 3869	to	3899	117 951 5200	to	5299	197 244 6600	to	6699
027 965 9487	to	9499	068 895 0334	to	0399	119 786 3051	to	3064	197 244 6700	to	6799
028 100 8069	to	8099	070 724 4488	to	4499	119 815 8961	to	6199	197 244 6800	to	8999
028 191 1852	to	1999	070 841 9181	to	9199	119 850 7400	to	7499	198 285 2556	to	2566
028 850 3000	to	3199	070 844 2546	to	2599	119 850 7700	to	7999	199 105 0778	to	0799
029 510 1500	to	1599	070 916 1340	to	1399	121 634 0460	to	0499	199 678 2968	to	2999
030 687 0903	to	0999	071 047 5768	to	5799	122 451 9879	to	9899	202 748 5133	to	5199
030 701 3442	to	3499	071 179 9800	to	9899	122 714 6805	to	6900	202 748 5245	to	5299
031 077 4507	to	4799	071 386 3682	to	3699	124 916 0304	to	0499	202 748 5300	to	5399
032 295 7500	to	9999	071 507 6840	to	6899	126 423 0136	to	0169	202 748 5400	to	5499
034 394 1000	to	1099	072 045 9641	to	9699	127 500 2328	to	2399	203 256 1240	to	1299
034 943 0400	to	0799	072 675 8287	to	8299	160 901 2254	to	2299	204 230 3577	to	3595
035 035 4337	to	4399	073 763 0867	to	0876	161 103 6581	to	6599	205 019 0174	to	0199
037 312 7500	to	7599	073 763 0878	to	0887	161 194 2857	to	0899	206 936 3184	to	3199
037 706 9578	to	9599	073 763 0889	to	0898	162 032 4447	to	4499	207 196 9900	to	9999
037 805 3677	to	3699	077 617 5481	to	5499	163 257 1085	to	1099	207 204 0700	to	0799
037 909 5490	to	5499	077 999 4001	to	4090	164 359 2406	to	2499	207 204 0800	to	0899
037 931 4660	to	4699	078 174 4475	to	4499	166 101 1433	to	1499	207 514 3857	to	3899
039 145 6521	to	6595	078 219 4931	to	4999	167 555 5201	to	5212	208 556 4707	to	4799
040 024 3901	to	3999	078 250 4756	to	4799	167 555 5214	to	5299	210 057 4038	to	4047
040 674 7100	to	7199	078 823 8312	to	8399	169 618 6274	to	6299	210 221 0548	to	0599
040 688 8816	to	8899	079 374 0300	to	2499	171 806 6878	to	6893	214 061 4711	to	4724
041 299 6752	to	6799	079 807 2342	to	2399	173 639 4685	to	4699	214 303 6311	to	6325
041 623 8889	to	8899	082 721 0228	to	0254	174 238 2779	to	2799	214 303 6239	to	6258
041 803 6565	to	6599	083 140 5000	to	7499	174 281 9347	to	9399	214 877 4251	to	4273
043 129 1968	to	1997	083 784 8886	to	8899	175 251 2600	to	0699	215 252 3918	to	3992
043 205 5922	to	5999	083 913 6915	to	6999	176 281 7937	to	7950	217 585 1400	to	1499

218 698 2157	to	2199	254 252 2800	to	2899	258 405 7100	to	7199	262 337 4900	to	4999
218 746 0800	to	0899	254 252 2900	to	2999	258 405 7200	to	7299	262 337 5000	to	5099
219 095 0100	to	0399	254 252 3000	to	3099	258 405 7300	to	7399	262 337 5100	to	5199
219 389 1885	to	1899	254 252 3100	to	3199	258 405 7400	to	7499	262 337 5200	to	5299
219 568 7435	to	7456	254 252 3200	to	3299	258 405 7800	to	7899	262 337 5300	to	5399
219 568 7469	to	7487	254 252 3300	to	3399	258 405 7900	to	7999	262 337 5400	to	5499
221 316 5757	to	5799	254 252 3400	to	3499	258 405 8000	to	8099	262 337 5500	to	5599
223 476 3914	to	3999	254 252 3500	to	3599	258 405 8100	to	8199	262 337 5600	to	5699
223 565 4921	to	4957	254 252 3600	to	3699	258 405 8200	to	8299	262 337 5700	to	5799
223 565 4979	to	4999	254 252 3700	to	3799	258 405 8300	to	8399	262 337 5800	to	5899
224 636 4745	to	4765	254 252 3800	to	3899	258 405 8400	to	8499	262 337 5900	to	5999
224 636 4776	to	4799	254 252 3900	to	3999	258 405 8500	to	8599	262 337 6000	to	6099
224 636 4855	to	4885	254 252 4000	to	4099	258 405 8600	to	8699	262 337 6100	to	6199
224 636 4932	to	4948	254 252 4100	to	4199	258 405 8700	to	8799	262 337 6200	to	6299
224 636 4950	to	4962	254 252 4200	to	4299	258 405 8800	to	8899	262 337 6300	to	6399
224 636 4985	to	4999	254 252 4300	to	4399	258 405 8900	to	8999	262 337 6400	to	6499
224 723 0757	to	0799	254 252 4400	to	4499	258 405 9600	to	9699	262 337 6500	to	6599
224 730 2207	to	2299	254 252 4500	to	4599	258 405 9700	to	9799	262 337 6600	to	6699
225 970 0500	to	0599	254 252 4600	to	4699	258 405 9800	to	9899	262 337 6700	to	6799
225 970 0600	to	0699	254 252 4700	to	4799	258 405 9900	to	9999	262 337 6800	to	6899
225 970 0700	to	0799	254 252 4800	to	4899	259 014 9989	to	9999	262 337 6900	to	6999
227 033 8679	to	8699	254 252 4900	to	4999	259 062 4788	to	4798	262 337 7000	to	7099
227 275 9400	to	9999	254 565 7607	to	7700	259 218 1400	to	1499	262 337 7100	to	7199
228 463 2456	to	2499	254 907 1203	to	1299	259 218 1500	to	1599	262 337 7200	to	7299
228 510 4852	to	4899	255 185 9527	to	9599	259 218 1600	to	1699	262 337 7300	to	7399
229 462 8451	to	8475	255 397 1557	to	1576	259 590 5654	to	5699	262 337 7400	to	7499
229 668 5977	to	5999	255 425 2989	to	2998	259 670 8268	to	8299	262 337 7500	to	7599
229 923 9176	to	9199	255 728 6412	to	6499	259 835 6238	to	6399	262 337 7600	to	7699
229 924 6696	to	6699	255 728 9842	to	9899	259 835 6701	to	6799	262 337 7700	to	7799
230 051 9500	to	9999	256 134 9833	to	9839	260 224 4600	to	4699	262 337 7800	to	7899
236 366 2431	to	2499	256 134 9840	to	9849	260 224 5941	to	5999	262 337 7900	to	7999
236 607 6882	to	6899	256 134 9850	to	9859	260 310 2821	to	2899	262 337 8000	to	8099
236 660 5853	to	5872	256 134 9860	to	9869	260 452 0010	to	0022	262 337 8100	to	8199
239 322 5200	to	5299	256 134 9870	to	9879	260 452 0049	to	4299	262 337 8200	to	8299
239 322 5400	to	5499	256 134 9880	to	9889	260 553 8200	to	8299	262 337 8300	to	8399
239 322 5600	to	5699	256 134 9890	to	9899	260 553 8600	to	8699	262 337 8400	to	8499
239 322 5800	to	5899	256 247 6900	to	6999	260 553 9600	to	9799	262 337 8500	to	8599
239 322 5900	to	5999	256 550 5536	to	5545	260 553 9800	to	9899	262 337 8600	to	8699
239 607 4783	to	4799	256 799 2257	to	2299	260 553 9900	to	9999	262 337 8700	to	8799
240 593 1879	to	1899	257 154 8763	to	8799	260 761 1603	to	1662	262 337 8800	to	8899
242 591 2048	to	2099	257 154 8800	to	8899	261 183 2100	to	2299	262 337 8900	to	8999
242 735 0388	to	0398	257 765 4567	to	4599	261 426 0408	to	0499	262 337 9000	to	9099
242 951 7276	to	7299	257 765 4610	to	4696	262 082 8000	to	8099	262 337 9100	to	9199
243 535 6370	to	6399	257 765 4737	to	4799	262 082 8100	to	8199	262 337 9200	to	9299
244 004 9985	to	9999	257 792 7800	to	7889	262 082 8200	to	8299	262 337 9300	to	9399
244 004 9985	to	9999	257 792 7900	to	7999	262 082 8300	to	8399	262 337 9400	to	9499
244 268 9765	to	9799	257 792 8000	to	8099	262 082 8400	to	8499	262 337 9500	to	9599
244 347 4471	to	4499	257 856 9863	to	9899	262 288 7302	to	7399	262 337 9600	to	9699
249 056 1551	to	1599	258 103 1773	to	1782	262 288 7400	to	7499	262 337 9700	to	9799
249 336 9438	to	9499	258 405 1800	to	1899	262 288 9900	to	9999	262 337 9800	to	9899
249 399 4000	to	4099	258 405 1900	to	1999	262 337 2600	to	2699	262 337 9900	to	9999
249 399 4100	to	4199	258 405 3300	to	3399	262 337 2700	to	2700	262 472 3188	to	3199
249 399 4200	to	4299	258 405 3400	to	3499	262 337 2800	to	2800	262 472 3200	to	3299
249 399 4300	to	4399	258 405 3500	to	3599	262 337 2900	to	2900	262 546 3100	to	3199
249 399 4400	to	4499	258 405 3700	to	3799	262 337 3000	to	3099	262 546 3200	to	3299
249 399 4500	to	4599	258 405 3800	to	3899	262 337 3100	to	3199	262 546 3300	to	3399
249 399 4600	to	4699	258 405 3900	to	3999	262 337 3200	to	3299	262 546 3400	to	3499
249 399 4700	to	4799	258 405 4000	to	4099	262 337 3300	to	3399	262 546 3500	to	3599
249 399 4800	to	4899	258 405 4100	to	4199	262 337 3400	to	3499	262 546 3600	to	3699
249 399 4900	to	4999	258 405 4200	to	4299	262 337 3500	to	3599	262 546 3900	to	3999
250 159 7502	to	7599	258 405 4600	to	4699	262 337 3600	to	3699	262 546 4300	to	4399
250 566 9644	to	9699	258 405 5600	to	5699	262 337 3700	to	3799	262 546 4400	to	4499
250 661 8425	to	8499	258 405 5700	to	5799	262 337 3800	to	3899	262 546 4500	to	4599
251 335 5731	to	5799	258 405 5800	to	5899	262 337 3900	to	3999	262 546 4600	to	4699
251 379 2380	to	2399	258 405 5900	to	5999	262 337 4000	to	4099	262 546 4700	to	4799
252 005 7626	to	7699	258 405 6000	to	6099	262 337 4100	to	4199	262 546 4800	to	4899
252 421 8401	to	8499	258 405 6100	to	6199	262 337 4200	to	4299	262 546 4900	to	4999
252 464 2810	to	2899	258 405 6200	to	6299	262 337 4300	to	4399	262 546 7100	to	7199
252 612 3683	to	3699	258 405 6300	to	6399	262 337 4400	to	4499	262 546 7200	to	7299
252 469 2125	to	2199	258 405 6400	to	6499	262 337 4500	to	4599	262 546 7300	to	7399
252 833 3286	to	3297	258 405 6800	to	6899	262 337 4600	to	4699	262 546 7400	to	7499
253 470 3948	to	3999	258 405 6900	to	6999	262 337 4700	to	4799	262 546 9800	to	9899
253 565 7400	to	7499	258 405 7000	to	7099	262 337 4800	to	4899	262 546 9900	to	9999

262 567 1788	to	1799	389 887 9234	to	9299	412 395 8599	to	8699	437 427 0500	to	3499
263 254 2500	to	2500	390 001 3182	to	3199	412 485 6500	to	6599	439 179 2300	to	2399
263 340 0000	to	0099	390 001 3500	to	3699	412 485 6610	to	6699	439 310 0458	to	0499
263 340 0100	to	0199	390 545 5974	to	5999	412 885 5953	to	5999	440 698 1947	to	1999
263 340 0500	to	0599	391 104 6146	to	6199	414 193 3608	to	3674	440 858 6300	to	6399
263 340 0600	to	0699	391 574 1466	to	1499	414 193 3677	to	3699	440 858 6420	to	7299
263 340 2700	to	2799	391 783 3020	to	3599	414 411 7348	to	7399	441 199 1655	to	1699
263 340 2800	to	2899	391 792 6100	to	6199	414 640 0757	to	0799	443 127 3648	to	3699
263 340 3000	to	3099	392 668 2956	to	2999	414 965 1727	to	1799	443 127 4000	to	4099
264 341 2360	to	2399	392 854 8500	to	8899	417 302 8104	to	8199	443 673 7900	to	7999
264 380 4000	to	4099	393 584 7566	to	7699	417 387 6532	to	6599	443 800 9335	to	9399
264 380 4100	to	4199	393 650 0074	to	0099	417 496 6800	to	6999	444 382 8822	to	8899
264 799 6049	to	6099	393 838 8316	to	8499	417 871 9250	to	9299	444 390 1667	to	1699
264 860 7832	to	7868	393 893 6007	to	6099	417 930 9533	to	9599	444 457 3854	to	3899
265 127 3658	to	3699	394 126 6907	to	6999	418 164 6500	to	6799	450 048 4173	to	4199
265 380 7111	to	7137	394 189 0405	to	0599	418 423 9863	to	9899	450 048 4442	to	4699
265 444 4762	to	4799	394 822 3243	to	3278	418 633 5922	to	5999	450 560 5173	to	5199
265 548 7074	to	7099	394 990 1810	to	1899	418 719 8520	to	8599	450 620 3077	to	3099
266 106 0000	to	2499	395 343 3264	to	3299	418 744 2235	to	2299	450 620 3135	to	3199
266 129 5809	to	5899	395 373 3035	to	3099	418 962 2848	to	2899	450 780 2716	to	2799
266 673 0000	to	2499	395 396 9649	to	9799	419 543 0286	to	0299	450 801 2700	to	2799
266 749 7900	to	7999	395 970 3240	to	3299	419 730 0300	to	0399	451 109 2967	to	2984
266 868 0952	to	0999	397 622 4054	to	4099	420 277 0015	to	0049	451 115 4110	to	4125
266 868 1028	to	1099	397 819 8902	to	8999	420 599 0734	to	0798	451 115 4127	to	4199
266 868 1100	to	1199	398 149 7200	to	7699	420 661 4115	to	4199	451 746 0700	to	0799
266 868 1200	to	1299	399 070 0872	to	0899	420 758 9500	to	9699	452 265 0074	to	0099
267 296 1237	to	1299	399 156 7119	to	7199	420 969 3951	to	3971	452 265 0246	to	0299
267 324 8946	to	8998	399 203 5064	to	5099	420 969 3973	to	3999	452 265 0335	to	0999
268 072 1203	to	1299	399 296 9910	to	9999	421 116 3565	to	3599	452 509 1169	to	1199
271 660 4333	to	4400	399 396 8935	to	8999	421 130 9300	to	9399	452 855 6471	to	6499
273 520 0000	to	9999	399 792 7775	to	7799	421 313 4500	to	4999	452 890 4679	to	4799
273 520 6000	to	8999	399 792 8300	to	8399	421 364 5537	to	5599	452 900 8215	to	8238
273 775 7700	to	7899	400 427 1051	to	1999	421 656 2609	to	2699	453 117 9146	to	9199
273 882 1913	to	1998	401 045 1505	to	1549	421 988 9700	to	9799	453 334 3631	to	3699
274 750 0300	to	0400	401 045 1571	to	1599	422 172 4667	to	4699	453 603 7841	to	7891
274 782 0549	to	0599	401 294 2700	to	2799	422 484 4212	to	4299	453 650 1140	to	1199
302 000 0000	to	9999	401 310 9505	to	9599	422 556 1270	to	1299	453 741 1300	to	1399
349 746 2056	to	2099	401 382 5312	to	5399	422 587 7024	to	7099	454 013 2919	to	2999
350 518 7350	to	3734	402 578 7876	to	7899	422 819 7533	to	7599	454 186 2411	to	2499
360 011 1690	to	1699	403 125 6744	to	6799	422 842 5073	to	5087	454 268 4883	to	4899
360 168 6008	to	6099	403 260 7000	to	7499	422 907 7563	to	7599	454 302 5400	to	5499
360 173 8800	to	8899	403 280 6470	to	6499	424 500 6050	to	6099	454 490 8300	to	8399
360 324 2326	to	2399	403 685 8600	to	8699	424 641 8500	to	8599	454 547 7434	to	7499
362 861 3064	to	3099	404 003 0300	to	0399	424 871 6600	to	6699	454 922 4867	to	4895
373 006 2176	to	2199	404 041 8838	to	8899	425 298 2352	to	2399	455 221 1348	to	1499
374 768 2600	to	2699	404 071 4268	to	4299	425 418 4269	to	4299	455 364 2147	to	2199
375 169 4400	to	4599	404 347 5356	to	5399	425 418 4405	to	4499	455 399 5400	to	5499
375 829 3400	to	3499	404 347 5548	to	5599	426 547 4566	to	4599	455 476 0676	to	0699
375 851 9100	to	9199	404 726 4500	to	4599	427 412 6337	to	6499	455 543 0618	to	0699
376 196 0911	to	0999	404 961 5001	to	5199	427 481 0900	to	0999	456 410 9006	to	9099
378 085 3679	to	3699	405 325 0188	to	0198	428 027 2742	to	2752	456 470 4146	to	4299
378 351 1063	to	1099	406 009 4587	to	4599	429 474 4172	to	4199	456 619 4460	to	4499
379 843 5100	to	5199	406 260 6830	to	6899	429 889 2900	to	2999	457 333 2686	to	2699
380 093 9600	to	9699	406 459 6641	to	6999	430 150 4401	to	4599	457 729 1767	to	1777
380 165 1165	to	1199	406 733 3000	to	3999	430 172 9800	to	9899	457 937 8615	to	8699
381 325 4500	to	4599	407 545 1557	to	1599	430 177 1900	to	2099	458 028 9810	to	9899
381 604 2510	to	2699	407 594 0412	to	0599	430 444 9500	to	9699	458 057 2712	to	2999
381 645 9525	to	9599	407 692 9100	to	9299	430 664 4070	to	4099	458 069 9537	to	9599
383 314 3968	to	3999	407 959 2190	to	2199	432 168 8419	to	8499	458 069 9665	to	9699
383 892 1000	to	1344	408 265 2275	to	2288	432 708 6800	to	6999	458 337 5222	to	5299
383 892 1382	to	1399	408 499 7700	to	7799	432 744 1544	to	1599	458 354 7653	to	7999
384 925 3641	to	3654	408 499 7900	to	7999	432 995 9775	to	9799	458 671 8678	to	8699
385 568 2331	to	2399	408 682 8484	to	8599	433 003 5800	to	5899	458 671 8721	to	8798
385 599 7554	to	7575	408 698 7015	to	7099	433 757 3047	to	3099	458 847 5044	to	5999
385 774 2024	to	2099	409 072 3941	to	3999	433 765 4003	to	4099	459 274 7624	to	7699
386 624 1412	to	1599	410 491 2311	to	2399	434 482 7060	to	7199	459 365 5432	to	5499
386 883 8936	to	8999	410 694 8400	to	8599	434 513 2386	to	2399	459 378 5764	to	5799
387 314 5574	to	5599	410 775 1500	to	1599	434 968 3076	to	3092	459 472 4816	to	4999
387 837 6300	to	6399	410 795 7927	to	7999	435 303 1831	to	1842	460 349 6878	to	6899
388 828 0656	to	0699	410 867 0917	to	0966	435 303 1986	to	1999	460 550 1909	to	1999
389 696 2400	to	2799	410 867 0970	to	0999	435 666 6092	to	6399	460 997 5234	to	5299
389 846 3104	to	3135	411 868 1023	to	1199	436 082 6400	to	6899	461 973 6443	to	6499
389 846 3145	to	3195	411 922 2322	to	2399	436 160 6441	to	6499	462 152 0107	to	0299
389 887 9211	to	9230	412 193 0900	to	0999	437 316 7115	to	7199	462 274 1072	to	1099

462 277 8373	to	8399	482 729 6800	to	6899	505 096 0662	to	0699	609 893 1000	to	1099
462 554 6051	to	6099	483 363 7207	to	7299	505 893 7739	to	7799	610 092 3200	to	3299
463 011 5529	to	5540	483 402 2356	to	2399	505 893 7800	to	7999	610 582 4200	to	4299
463 176 4115	to	4199	483 486 5100	to	5199	506 124 0800	to	0999	611 879 6939	to	6999
463 176 4229	to	4299	483 632 1521	to	1599	506 165 7027	to	0099	612 291 8013	to	8099
463 185 2600	to	2799	483 632 2600	to	2799	506 502 5209	to	5299	612 751 5171	to	5199
463 227 7711	to	7799	483 849 1615	to	1699	506 756 1682	to	1699	612 751 5226	to	5299
463 414 4869	to	4899	484 174 4803	to	5299	506 756 1700	to	1799	612 751 6083	to	6099
463 808 3484	to	3499	484 323 8900	to	9199	506 756 1800	to	1899	612 751 6268	to	6299
463 945 7400	to	7899	484 680 5000	to	5038	506 836 5326	to	5399	612 751 6572	to	6599
464 629 9000	to	9399	484 680 5040	to	5074	508 488 6226	to	6299	612 774 2111	to	2199
464 711 4332	to	4399	484 680 5077	to	5099	508 789 8332	to	8399	612 774 2254	to	2299
465 692 3963	to	3999	485 029 4913	to	4999	508 789 8400	to	8499	612 774 2500	to	2599
465 698 8300	to	8599	486 176 0600	to	0699	509 909 0425	to	0435	614 469 0979	to	0999
465 743 7745	to	7799	486 559 7555	to	7599	510 150 2400	to	2499	614 474 3000	to	3099
466 798 6056	to	6067	486 696 3023	to	3199	510 381 3200	to	3299	614 521 3490	to	3499
467 147 4300	to	4399	488 173 7900	to	7999	510 587 9500	to	9599	614 645 1800	to	1899
468 079 5782	to	5799	488 206 4100	to	4199	510 587 9659	to	9699	614 832 1100	to	2099
469 067 2817	to	2899	488 226 0200	to	0299	510 269 9770	to	9999	615 017 7505	to	7599
469 127 8000	to	8199	488 709 3906	to	3999	511 021 5042	to	5099	617 711 6609	to	6699
469 213 0359	to	0399	488 855 8359	to	8399	511 021 5100	to	5199	617 760 5266	to	5299
469 213 0500	to	0599	489 181 8963	to	8999	511 468 1747	to	1799	617 813 3601	to	3699
469 561 8011	to	8099	489 223 2000	to	2099	511 844 0100	to	0199	618 840 9200	to	9299
469 658 1961	to	1999	489 311 1930	to	1999	511 844 0340	to	0399	619 551 7229	to	7299
469 666 9900	to	9999	489 318 6200	to	6300	512 805 3913	to	3919	619 859 3000	to	3099
469 678 1900	to	1999	489 384 0027	to	0099	513 046 0700	to	0726	620 073 9400	to	9499
469 781 4900	to	4999	489 427 0658	to	0899	513 149 0600	to	0699	621 614 7907	to	7930
469 947 6960	to	6999	489 997 5252	to	5299	513 445 3000	to	3199	621 614 7932	to	7999
470 755 5800	to	5818	490 669 5850	to	6099	513 466 2034	to	2044	621 648 8021	to	8199
471 918 0300	to	0999	490 717 7080	to	7099	513 539 9052	to	9099	621 648 8500	to	8599
471 985 2408	to	2419	490 721 6000	to	6099	513 539 9267	to	9299	621 904 8351	to	8599
472 191 6700	to	6799	490 793 1500	to	2099	513 539 9800	to	9899	621 916 1978	to	1989
472 270 2555	to	2599	490 886 8171	to	8199	513 539 9985	to	9999	622 989 8032	to	8099
472 987 0213	to	0241	490 977 9221	to	9240	513 606 5459	to	5490	623 076 9300	to	9399
472 987 0290	to	0299	491 258 8100	to	9099	513 812 1751	to	1799	623 819 5006	to	5099
473 151 2069	to	2199	491 567 1376	to	1399	514 103 3600	to	3699	623 895 8200	to	8399
473 666 9138	to	9199	492 254 4800	to	4899	514 103 3700	to	3799	623 917 0000	to	0099
473 952 3429	to	3499	492 283 5100	to	5199	514 103 3800	to	3899	623 917 0200	to	0299
474 108 5402	to	5499	492 610 6813	to	6899	600 645 3223	to	3299	624 468 5288	to	5299
474 356 5193	to	5299	493 394 5568	to	5599	601 339 1200	to	1399	624 665 3162	to	3198
474 949 3366	to	3399	493 470 2562	to	2599	601 653 5884	to	5899	625 088 6735	to	6799
475 134 9362	to	9399	493 473 7700	to	7799	601 661 7700	to	7799	625 916 9500	to	9799
475 167 9667	to	9699	493 716 2153	to	2199	601 682 5343	to	5399	625 968 8956	to	8999
475 319 3415	to	3499	494 206 2972	to	2999	601 928 1600	to	1699	627 005 3938	to	3999
475 319 3649	to	3799	494 217 3446	to	3999	602 512 2972	to	2999	627 384 3907	to	4099
475 340 6400	to	6599	494 224 0500	to	0599	602 555 2400	to	2799	627 496 7549	to	7599
475 424 8410	to	8499	495 145 0600	to	0699	602 829 7061	to	7099	627 708 3605	to	3699
475 629 9156	to	9199	496 209 7425	to	7499	603 483 9572	to	9599	627 776 2500	to	2599
475 850 6101	to	6199	496 213 8728	to	8799	603 490 7200	to	7299	628 226 3100	to	3199
475 875 2500	to	2599	496 474 5226	to	5248	603 678 7100	to	7199	628 814 4702	to	4799
476 169 8264	to	8299	497 053 8517	to	8699	603 678 7662	to	7699	628 851 9689	to	9699
476 189 3000	to	3499	497 854 8673	to	8699	603 678 7902	to	7999	629 510 7200	to	7299
476 331 2480	to	2499	498 449 8888	to	8899	603 678 8418	to	8499	629 964 4200	to	4294
477 289 8601	to	8699	498 929 8285	to	8499	603 678 8700	to	9999	630 389 3056	to	3071
477 681 5206	to	5299	498 936 5310	to	5399	604 086 0880	to	0899	630 463 0588	to	0599
478 010 4243	to	4268	499 016 5425	to	5499	604 349 1414	to	1499	631 459 9117	to	9199
478 010 4270	to	4291	499 440 8575	to	8899	604 503 7776	to	7799	631 762 9325	to	9399
478 450 5071	to	5099	499 731 6717	to	6799	605 520 9037	to	9099	632 217 4933	to	4999
478 469 7838	to	7858	500 064 1858	to	1869	605 685 4010	to	4099	632 500 0000	to	640 3999
478 469 7883	to	7899	500 070 5725	to	7799	605 988 6467	to	6499	633 110 4165	to	4199
479 280 9800	to	9899	501 058 0016	to	0026	607 689 7951	to	7960	633 110 4303	to	4499
479 365 9116	to	9176	501 331 0300	to	0399	607 728 1276	to	1299	633 438 6429	to	6599
479 412 9900	to	9999	501 460 0977	to	0999	608 727 7100	to	7199	633 588 7173	to	7182
479 667 6190	to	6199	502 227 7645	to	7699	608 727 7273	to	7599	634 725 0700	to	0799
479 748 9680	to	9699	502 424 0200	to	0499	608 813 9950	to	9999	634 803 3239	to	3299
479 860 7000	to	7199	502 424 0600	to	0699	609 067 5325	to	5399	634 807 2474	to	2499
480 526 2000	to	2099	502 496 6923	to	6999	609 067 5488	to	5499	634 827 5900	to	5999
480 640 6330	to	6399	503 003 2700	to	2899	609 067 5600	to	5699	634 886 3428	to	3499
480 658 0568	to	0599	503 194 5144	to	5153	609 289 6123	to	6199	635 559 3449	to	3499
480 689 5100	to	5199	503 790 9922	to	9948	609 438 4400	to	4499	636 289 6214	to	6299
481 072 9463	to	9499	504 045 4030	to	4099	609 493 1100	to	1199	636 634 8007	to	8042
481 673 0074	to	0095	504 166 0200	to	0599	609 766 8091	to	8999	637 150 1200	to	1299
482 527 1500	to	1599	504 240 1062	to	1399	609 825 4100	to	4115	637 562 5828	to	5899
482 541 5255	to	5299	504 805 3300	to	3499	609 884 2981	to	2999	638 042 1647	to	1699

638 049 4984	to	4999	653 455 4874	to	4899	683 444 8159	to	8199	702 254 9300	to	9399
638 318 1115	to	1199	654 238 0000	to	0399	685 154 7780	to	7789	702 264 7569	to	7599
638 318 1453	to	1499	654 404 3065	to	3092	685 297 7645	to	7699	702 519 0513	to	0524
638 885 0000	to	0299	654 962 2900	to	3199	685 623 5264	to	5299	702 713 1800	to	1809
638 903 4362	to	4373	655 103 5081	to	5199	685 650 9487	to	9499	702 821 5730	to	5799
639 415 1929	to	1999	655 523 2600	to	2999	685 669 4200	to	4299	702 821 5805	to	5899
639 415 2019	to	2099	656 305 2448	to	2499	685 757 8452	to	8499	702 844 6975	to	6994
639 420 6200	to	6299	657 347 4438	to	4999	686 071 2694	to	2799	702 846 6331	to	6399
639 469 3517	to	3799	657 710 8100	to	8999	686 176 3333	to	3354	702 848 3900	to	3999
639 605 2143	to	2199	657 780 0985	to	0999	686 372 3200	to	3299	702 857 7302	to	7499
639 657 8600	to	8799	658 586 1400	to	1499	686 644 5879	to	5899	702 878 0114	to	0199
640 289 7500	to	7599	658 877 8000	to	8199	686 899 1371	to	1399	703 364 1707	to	1799
640 289 7700	to	7999	658 880 8000	to	8199	686 931 7636	to	7699	740 002 7710	to	7719
641 170 4420	to	4499	659 398 7300	to	7399	687 601 0973	to	0999	740 037 6730	to	6800
641 318 3133	to	3199	659 706 8113	to	8199	687 614 6774	to	6799	740 119 2275	to	2284
641 378 6500	to	6999	659 846 7837	to	7899	688 120 9000	to	9999	740 130 6688	to	6698
641 383 8739	to	8799	660 510 4100	to	4199	688 314 3107	to	3191	740 144 2780	to	2795
641 877 3187	to	3299	660 673 0400	to	0599	690 291 1361	to	1371	740 241 9049	to	9099
641 877 3310	to	3399	661 488 5000	to	5099	690 788 2877	to	2899	740 252 9265	to	9294
642 355 8094	to	8199	661 609 9100	to	9199	690 893 5344	to	5399	740 255 1718	to	1799
642 355 8308	to	8999	661 716 9420	to	9499	690 893 5512	to	5599	740 274 2602	to	2619
642 900 0018	to	0099	661 906 6522	to	6599	690 904 1300	to	1599	740 277 0366	to	0392
643 030 6254	to	6299	662 021 8332	to	8399	690 941 6000	to	6199	740 332 7658	to	7671
644 066 0882	to	0899	662 068 0700	to	0899	691 313 6383	to	6399	740 348 6641	to	6658
644 069 0600	to	0699	662 553 0774	to	0799	691 313 6600	to	6699	740 351 4790	to	4799
644 077 7506	to	7699	663 078 7034	to	7099	691 582 8003	to	8099	740 374 7416	to	7499
644 085 8157	to	8199	663 763 5300	to	5399	691 664 1800	to	1999	740 470 2420	to	2443
644 112 9839	to	9899	663 883 7039	to	7499	691 664 2400	to	2499	740 514 0300	to	0499
644 373 9083	to	9099	663 938 9200	to	9299	692 727 9362	to	9399	740 523 7432	to	7449
644 380 1460	to	1499	664 253 8000	to	8499	692 798 1800	to	1899	740 535 1555	to	1580
644 733 4715	to	4799	664 656 3055	to	3099	693 249 0779	to	0799	740 557 3570	to	3579
644 900 9712	to	9799	665 174 6400	to	6499	693 249 0877	to	1699	740 650 4104	to	4140
644 901 0109	to	1299	665 274 8208	to	8299	693 445 0566	to	0999	740 684 0620	to	0800
644 901 1325	to	1399	665 669 5400	to	5499	693 448 8500	to	8999	740 701 6105	to	6114
644 923 6800	to	7799	666 132 8226	to	8299	693 645 9583	to	9599	740 705 9790	to	9799
644 932 4655	to	4699	666 696 2209	to	2299	693 965 4200	to	4299	740 726 6400	to	6500
645 318 7240	to	7499	666 696 2309	to	2399	695 741 2906	to	2999	740 748 8319	to	8329
645 333 1766	to	1799	667 032 9300	to	9399	695 947 8518	to	8599	740 765 3306	to	3399
645 790 8632	to	8699	667 729 5529	to	5599	696 662 8247	to	8299	740 774 8434	to	8499
645 821 0657	to	0699	668 383 8400	to	8699	697 447 8285	to	8296	740 779 4259	to	4299
645 930 7948	to	7999	670 368 3400	to	3499	698 042 4816	to	4899	740 786 1885	to	1899
645 975 0737	to	0762	670 369 7336	to	7399	698 131 2138	to	2157	740 790 5989	to	5999
646 262 6200	to	6299	670 750 7169	to	7199	698 227 0000	to	0099	740 803 4870	to	4879
646 270 7639	to	7799	671 046 6200	to	6399	700 065 2570	to	2599	740 820 4854	to	7836
646 798 4000	to	4999	671 251 5448	to	5499	700 065 4800	to	4899	740 827 7578	to	7594
647 048 7035	to	7099	671 926 5600	to	5799	700 190 3350	to	3359	740 917 7490	to	7499
647 049 2900	to	2999	672 444 2000	to	2999	700 228 6048	to	6099	740 918 5531	to	5549
647 398 8300	to	8399	672 828 3410	to	3499	700 650 0452	to	0499	741 037 8528	to	8551
647 398 8481	to	8499	673 167 5776	to	5799	700 666 1323	to	1349	742 030 6135	to	6149
647 437 3000	to	4999	675 464 3700	to	3799	700 786 9106	to	9142	742 033 2663	to	2674
647 811 2188	to	2199	675 464 4000	to	4199	700 859 0744	to	0758	742 040 3300	to	3309
648 009 6057	to	6099	676 365 5958	to	5999	701 028 6780	to	6899	742 112 8155	to	8199
648 163 5300	to	5499	676 669 1024	to	1099	701 213 3900	to	3999	742 151 5000	to	5014
648 722 5283	to	5299	677 126 6734	to	6799	701 267 2000	to	3999	742 191 4640	to	4649
648 892 3164	to	3199	677 333 9979	to	9999	701 335 7312	to	7399	742 192 5210	to	5224
649 100 3989	to	3999	677 466 1088	to	1099	701 369 2005	to	2050	742 222 9200	to	9210
649 647 0370	to	0399	678 071 4500	to	4799	701 499 2260	to	2299	742 228 9660	to	9669
649 647 0522	to	0599	678 096 7531	to	7599	701 503 2247	to	2299	742 247 6980	to	6989
649 647 5237	to	5399	679 909 2578	to	2599	701 541 2271	to	2299	742 290 0936	to	0950
649 647 9100	to	9299	680 112 9565	to	9599	701 553 6557	to	6599	742 302 7600	to	7699
649 666 7800	to	8299	680 244 0903	to	0999	701 578 7460	to	7469	742 305 3711	to	3799
650 114 7707	to	7719	680 412 6046	to	6099	701 578 7475	to	7499	742 305 3800	to	3899
650 130 3400	to	3599	680 761 6800	to	6899	701 601 3457	to	3499	742 305 3900	to	3999
650 213 0406	to	0499	681 677 0540	to	0699	701 605 5913	to	5999	742 305 4000	to	4099
650 555 1749	to	1799	682 070 1029	to	1099	701 695 3982	to	3999	742 305 4100	to	4199
650 564 1900	to	1999	682 956 6280	to	6299	701 695 4148	to	4199	805 885 8411	to	8499
650 627 4212	to	4299	682 956 6490	to	6599	701 695 4227	to	4299	806 087 1100	to	1499
650 736 2043	to	2099	682 956 6700	to	6799	701 708 1741	to	1799	806 268 9275	to	9299
650 739 1540	to	1699	682 965 1178	to	1199	701 736 3966	to	3999	806 534 3400	to	3477
651 741 4415	to	4499	682 965 1201	to	1299	701 772 0870	to	0899	807 342 3283	to	3399
651 882 2800	to	2899	683 118 2389	to	2399	701 838 2800	to	2899	808 086 7100	to	7199
652 754 6317	to	6399	683 378 2000	to	2099	701 941 0600	to	0699	808 090 3440	to	3499
653 131 4945	to	4999	683 378 2117	to	2299	702 171 1603	to	1699	808 325 5161	to	5699
653 426 3300	to	3399	683 415 1200	to	1499	702 195 5109	to	5199	808 784 8000	to	8299

830 125 0672 to 0699	856 752 0200 to 0299	902 985 0833 to 0899	918 951 7231 to 7299
830 602 5800 to 5999	857 111 1352 to 1399	903 370 6934 to 6999	919 519 2786 to 2799
830 610 3700 to 3799	857 279 3450 to 3499	904 600 6523 to 6599	919 536 0770 to 0799
830 983 3500 to 3599	857 843 4000 to 4099	904 892 0378 to 0399	919 814 3095 to 3199
830 983 3635 to 3699	858 124 7644 to 7699	904 892 0648 to 1299	919 889 5110 to 5134
831 354 1387 to 1399	858 756 3111 to 3299	905 056 2216 to 2299	919 889 5137 to 5176
831 815 8240 to 8299	859 063 8200 to 8699	905 510 6647 to 6799	919 889 5178 to 5199
832 525 3810 to 3899	859 190 0600 to 0644	905 510 6900 to 7099	919 889 5030 to 5070
833 159 1884 to 1899	859 437 5538 to 5599	905 794 0000 to 0199	919 889 5090 to 5099
833 456 2567 to 2599	859 811 2888 to 2899	905 794 0288 to 0299	919 915 2774 to 2787
833 566 3015 to 3071	859 855 8873 to 8999	905 873 6900 to 6999	920 155 4662 to 4687
834 130 5200 to 5299	860 240 8520 to 8599	905 873 7100 to 7299	920 309 9039 to 9199
834 316 5444 to 5499	860 275 3900 to 3999	905 880 8900 to 8999	920 771 5321 to 5399
834 354 8747 to 8766	860 518 9629 to 9699	905 889 7100 to 7199	920 857 5500 to 5899
834 354 8824 to 8838	860 600 0021 to 0999	906 158 1508 to 1599	920 864 3480 to 3499
835 269 5700 to 5799	861 158 2350 to 2599	906 558 8812 to 8899	920 963 4567 to 4599
835 496 7303 to 7399	861 367 5400 to 5499	906 982 2214 to 2299	921 333 7400 to 7499
835 539 5200 to 5999	861 637 6010 to 6099	907 725 8500 to 8599	921 477 3762 to 3799
835 813 3015 to 3099	861 979 7292 to 7499	907 815 0216 to 0257	922 278 1048 to 1399
837 672 8967 to 8999	862 216 6100 to 6199	908 622 4225 to 4235	922 280 2019 to 2099
837 784 3282 to 3299	862 263 9213 to 9299	908 936 9254 to 9299	922 280 2233 to 2299
838 176 8377 to 8399	862 271 0800 to 0999	909 066 4494 to 7499	922 773 0459 to 0499
838 518 1257 to 1299	862 271 5000 to 5099	909 067 7400 to 7499	923 032 7000 to 7399
839 718 8257 to 8299	863 871 5138 to 5199	909 100 1787 to 1799	923 045 3630 to 3699
840 323 0600 to 0699	863 949 5300 to 5399	909 100 1900 to 2099	923 484 3600 to 3699
840 875 6235 to 6299	864 088 8200 to 8299	909 355 0422 to 0499	923 493 9403 to 9599
840 910 0900 to 0999	864 426 3972 to 3999	909 568 8900 to 9099	923 493 9681 to 9699
841 349 5000 to 5099	864 520 6117 to 6136	909 568 9300 to 9499	923 604 4424 to 4499
841 805 7747 to 7899	865 151 0526 to 0599	909 725 7307 to 7399	923 810 7800 to 8299
841 805 7944 to 8099	865 500 4034 to 4099	909 833 0947 to 0999	924 252 1200 to 1299
842 226 0685 to 0695	865 883 6082 to 6099	910 219 8631 to 8699	924 252 1400 to 1499
842 685 4600 to 4699	866 004 3000 to 3999	910 265 1100 to 1199	924 533 0711 to 0799
842 685 4742 to 4999	866 442 4100 to 4899	910 471 7273 to 7299	924 533 2343 to 2399
842 860 0300 to 0399	867 366 9108 to 9118	910 536 2505 to 2599	924 533 2428 to 2499
842 898 5582 to 5599	867 633 7403 to 7499	910 958 7499 to 7599	924 685 1957 to 1999
843 062 7100 to 7199	867 737 5623 to 5699	911 140 1000 to 2199	924 946 6300 to 6699
843 077 6288 to 6299	868 169 4529 to 4599	911 245 2545 to 2599	925 333 5900 to 6099
843 077 6378 to 6399	868 173 8400 to 8599	911 268 9077 to 9099	925 336 2300 to 2399
843 758 5769 to 5778	868 514 9000 to 9099	911 400 8948 to 8999	926 432 5907 to 5999
843 786 2554 to 2699	868 566 9200 to 9299	911 508 1620 to 1799	926 436 3600 to 3699
845 656 8165 to 8199	869 200 0000 to 9999	911 509 9310 to 9399	927 765 6257 to 6299
845 727 2100 to 2199	869 387 1150 to 1199	911 523 3000 to 3999	928 197 8100 to 8199
845 746 2618 to 2635	869 505 3500 to 3599	912 057 9922 to 9999	928 197 8283 to 8299
846 390 7531 to 7599	869 523 7033 to 7099	912 882 0563 to 0899	928 856 2059 to 2068
846 918 0572 to 0599	869 566 6150 to 6167	913 605 2218 to 2299	930 078 5800 to 5899
847 237 7690 to 7699	869 776 8785 to 8786	913 709 2429 to 2499	930 219 1722 to 1799
847 284 2481 to 2499	869 800 0000 to 9999	913 818 3501 to 3999	930 335 7810 to 7819
847 374 7055 to 7065	870 054 4814 to 4899	914 063 4300 to 4399	931 097 9259 to 9299
847 374 7055 to 7065	870 491 4812 to 4849	914 346 7621 to 7644	931 156 1502 to 1579
847 636 5304 to 5399	870 536 5820 to 5829	914 453 1366 to 1399	931 156 1600 to 1625
847 700 5447 to 5499	870 541 7167 to 7239	914 529 6185 to 6299	931 156 1671 to 1699
847 723 7500 to 7599	870 575 8155 to 8999	914 896 4658 to 4699	932 506 6400 to 6599
849 485 3427 to 3499	870 589 0485 to 0494	915 187 8774 to 8779	932 732 1796 to 1799
849 520 9850 to 9899	870 691 7060 to 7099	915 300 2783 to 2799	932 827 9026 to 9099
849 608 1357 to 1399	872 028 4850 to 4899	915 546 6822 to 6999	932 957 2300 to 2399
849 792 2600 to 2699	872 029 9306 to 9399	915 646 5183 to 5199	933 060 6160 to 6189
850 546 1862 to 1899	872 078 3709 to 3799	915 671 3963 to 3980	933 387 2541 to 2561
851 143 6826 to 6844	872 100 0445 to 0459	915 671 3982 to 3999	933 760 3609 to 4199
851 209 9880 to 9899	900 556 4178 to 4199	915 675 2217 to 2299	933 894 0928 to 0999
851 928 9221 to 9299	900 845 0044 to 0099	916 440 3377 to 3399	934 018 2729 to 2741
852 589 6560 to 6599	900 936 0217 to 0299	916 670 6352 to 6399	934 180 0300 to 0399
853 049 3646 to 3699	900 936 0435 to 0499	916 682 5300 to 5399	934 236 3954 to 3999
854 304 4089 to 4999	901 058 5255 to 5280	916 694 1414 to 1499	934 622 8717 to 8999
854 529 2200 to 2299	901 273 1082 to 1099	916 703 0802 to 0821	935 216 0312 to 0399
854 532 0000 to 2999	901 287 5143 to 5199	917 089 0709 to 0799	935 843 2202 to 2247
855 001 6204 to 6249	901 291 2789 to 2799	917 089 0842 to 0899	936 024 8889 to 8899
855 319 9364 to 9399	901 525 7122 to 7199	917 216 2928 to 2999	936 339 4455 to 4499
855 361 3390 to 3399	902 089 1253 to 1299	917 370 6300 to 6499	
856 226 0490 to 0499	902 198 9769 to 9799	917 486 4900 to 4999	
856 656 5800 to 5999	902 948 1269 to 1299	918 460 0602 to 0699	

Missing, Lost, or Stolen Canadian Money Order Forms

Do Not Cash — Upon Receipt, Notify Local Postal Inspectors

Provide this listing to all Postal Service™ employees responsible for accepting and cashing postal money orders. Destroy all interim notices when the numbers listed appear in the *Postal Bulletin*. The new money order serial

numbers consist of the first 9 digits. The tenth digit is a check digit only.

Do not cash outdated money orders **104 151 601 to 692 600 000**. Advise holders to send invalid money orders to Canada Post Corporation, Ottawa, Canada K1A 0B1. Check for altered dollar amounts by holding money orders to the light.

719 869 731	to	9 760	728 915 371	to	5 850	735 283 008	to	3 020	742 684 849	to	4 890
720 227 871	to	7 930	728 953 141	to	3 410	735 293 131	to	3 220	742 839 553	to	9 630
720 227 949	to	7 960	728 954 280	to	4 310	735 635 010	to	5 040	742 913 668	to	3 700
720 368 543	to	8 570	729 169 081	to	9 140	735 783 961	to	3 990	742 917 287	to	7 296
720 392 151	to	2 570	729 363 841	to	3 870	735 803 401	to	3 430	742 921 891	to	1 980
720 556 491	to	6 640	729 682 891	to	3 190	736 005 420	to	5 440	742 983 631	to	3 810
720 558 621	to	8 650	729 838 940	to	9 070	736 366 021	to	6 110	743 020 021	to	0 170
720 575 361	to	5 570	729 839 101	to	9 130	736 624 456	to	4 500	743 206 491	to	6 500
720 590 152	to	0 179	730 077 683	to	7 840	736 670 851	to	1 060	743 235 992	to	6 050
721 638 331	to	9 170	730 109 847	to	9 880	736 767 061	to	7 090	743 940 631	to	0 900
721 815 391	to	5 420	730 373 761	to	3 850	736 767 093	to	7 120	743 978 011	to	8 070
721 969 713	to	9 740	730 501 951	to	2 130	736 982 191	to	2 370	744 234 751	to	4 780
722 072 137	to	2 160	730 519 379	to	9 470	736 982 551	to	2 730	744 499 591	to	9 680
722 378 265	to	8 280	730 569 278	to	9 360	737 110 141	to	0 170	744 626 901	to	6 910
722 413 990	to	4 004	730 711 711	to	1 740	737 185 501	to	5 710	745 388 794	to	8 910
722 764 948	to	4 980	730 722 991	to	3 230	737 317 321	to	7 350	746 446 806	to	6 820
722 825 840	to	5 889	730 845 970	to	5 990	737 517 781	to	7 840	746 818 351	to	8 410
723 153 841	to	3 850	730 888 291	to	8 320	737 628 181	to	8 210	747 245 266	to	5 280
723 237 616	to	7 630	730 927 591	to	7 680	737 634 258	to	4 270	747 364 813	to	4 830
723 331 081	to	1 110	731 307 914	to	7 930	738 361 971	to	1 980	747 501 434	to	1 450
723 496 443	to	6 470	731 402 431	to	2 460	738 447 601	to	7 660	747 739 891	to	0 070
723 967 291	to	7 320	731 407 232	to	7 320	738 648 355	to	8 450	748 148 649	to	8 760
724 655 196	to	5 340	731 588 301	to	8 340	738 849 811	to	9 900	748 259 960	to	9 970
724 711 441	to	1 500	731 767 273	to	7 320	738 892 270	to	2 290	748 565 162	to	5 280
724 711 538	to	1 560	731 781 061	to	1 120	738 997 259	to	7 380	748 874 988	to	5 030
724 793 221	to	3 250	731 837 821	to	7 910	739 161 451	to	1 540	749 137 381	to	7 410
724 908 109	to	8 120	731 841 377	to	1 450	739 219 381	to	9 440	749 190 192	to	0 210
724 937 461	to	7 670	732 018 481	to	8 600	739 740 151	to	0 180	749 685 421	to	5 450
725 163 118	to	3 151	732 067 972	to	8 370	739 793 491	to	3 520	749 846 791	to	6 850
725 202 735	to	2 750	732 188 649	to	8 670	739 793 527	to	3 550	749 993 131	to	3 580
725 398 591	to	8 800	732 193 460	to	3 470	739 942 621	to	2 650	750 071 587	to	1 610
725 464 591	to	4 920	732 201 241	to	1 390	739 999 231	to	9 320	750 408 167	to	8 183
725 475 321	to	5 330	732 220 431	to	0 440	740 011 517	to	1 530	750 438 421	to	8 501
725 711 057	to	1 070	732 355 201	to	5 380	740 030 701	to	0 970	750 743 911	to	4 030
725 738 581	to	8 730	732 472 320	to	2 560	740 261 740	to	1 820	750 779 118	to	9 400
725 981 311	to	1 430	732 541 605	to	1 620	740 265 811	to	6 290	750 910 981	to	1 010
725 987 835	to	7 880	732 572 221	to	2 490	740 299 111	to	9 170	750 960 841	to	0 900
726 060 811	to	0 900	732 586 479	to	6 710	740 299 231	to	9 260	751 296 211	to	6 240
726 391 970	to	2 520	732 994 037	to	4 080	740 329 266	to	9 320	751 539 121	to	9 180
726 484 771	to	4 800	733 163 449	to	3 460	740 889 081	to	9 090	751 541 311	to	1 790
726 493 351	to	5 300	733 297 171	to	7 290	741 010 421	to	0 530	751 757 641	to	7 700
726 504 031	to	4 063	733 446 631	to	7 110	741 113 041	to	3 370	751 936 951	to	7 010
726 504 070	to	4 090	733 474 665	to	4 770	741 373 891	to	4 340	751 951 861	to	1 890
726 504 331	to	4 390	733 704 482	to	4 570	741 452 369	to	2 490	751 999 021	to	9 110
726 563 701	to	4 060	733 751 041	to	1 130	741 492 991	to	3 140	752 139 516	to	9 570
726 599 371	to	9 460	734 009 101	to	9 130	741 553 460	to	3 470	752 182 892	to	2 950
726 626 356	to	6 370	734 290 759	to	0 770	741 764 431	to	4 520	752 206 861	to	7 100
727 182 271	to	2 510	734 389 273	to	9 290	741 764 431	to	4 520	752 295 241	to	5 600
727 416 181	to	6 240	734 440 031	to	0 111	742 178 834	to	8 880	752 731 351	to	1 410
727 481 431	to	1 460	734 797 201	to	7 320	742 325 500	to	5 520	752 767 441	to	7 470
727 749 241	to	9 780	734 939 611	to	9 640	742 325 668	to	5 700	753 008 941	to	9 030
728 382 331	to	2 480	734 950 111	to	0 170	742 408 771	to	8 830	753 194 311	to	4 370
728 702 338	to	2 400	735 120 331	to	0 840	742 512 120	to	2 150	753 620 378	to	0 400

754 013 917	to	3 940	763 522 141	to	2 470	773 575 891	to	5 950	802 967 821	to	7 940
754 161 061	to	1 120	763 717 694	to	7 800	773 852 971	to	3 030	803 217 601	to	7 780
754 358 445	to	8 610	763 826 461	to	6 520	775 373 449	to	3 460	803 729 731	to	9 850
754 410 451	to	0 660	763 900 460	to	0 471	789 257 191	to	7 250	803 747 402	to	7 520
754 438 393	to	8 410	763 900 479	to	0 530	790 448 020	to	8 460	804 138 181	to	8 420
754 493 109	to	3 130	763 917 271	to	7 750	790 597 485	to	7 530	804 428 224	to	8 250
754 664 182	to	4 220	764 125 801	to	5 860	790 911 883	to	1 900	804 682 411	to	2 710
754 816 377	to	6 470	764 284 525	to	4 560	791 057 441	to	7 550	805 272 525	to	2 540
755 487 421	to	7 600	764 526 241	to	6 330	791 239 081	to	9 290	805 523 445	to	3 460
755 592 901	to	3 140	764 601 421	to	1 600	791 374 483	to	4 500	805 745 704	to	5 730
755 790 020	to	0 030	764 650 231	to	0 470	791 387 971	to	8 030	806 452 907	to	2 980
755 791 730	to	1 800	764 984 371	to	4 850	791 447 521	to	7 850	806 744 781	to	4 850
755 926 951	to	7 070	765 003 667	to	3 680	791 451 151	to	1 240	806 982 181	to	2 300
755 934 332	to	4 510	765 042 517	to	2 540	791 500 009	to	0 470	807 764 791	to	4 910
755 957 701	to	8 000	765 194 728	to	4 970	791 771 431	to	1 490	808 089 931	to	9 960
755 962 981	to	3 280	765 387 365	to	7 450	792 004 293	to	4 320	808 656 423	to	6 450
756 035 371	to	5 490	765 541 801	to	2 100	792 018 379	to	8 420	808 753 771	to	3 800
756 301 257	to	1 290	765 638 461	to	8 970	792 070 621	to	0 740	809 189 001	to	9 010
756 371 565	to	1 580	765 647 101	to	7 190	792 145 211	to	5 230	809 886 879	to	6 930
756 876 031	to	6 120	765 813 781	to	4 029	792 391 381	to	1 620	809 890 489	to	0 500
756 876 151	to	6 240	765 879 314	to	9 390	792 452 779	to	2 790	810 323 734	to	3 760
756 970 129	to	0 140	765 954 001	to	4 030	792 772 728	to	2 770	810 367 116	to	7 140
757 059 613	to	9 630	766 120 286	to	0 320	792 903 511	to	3 990	810 526 351	to	6 500
757 078 540	to	8 560	766 125 716	to	5 750	793 282 518	to	2 533	810 806 911	to	6 940
757 086 209	to	6 240	766 158 824	to	8 840	794 041 831	to	2 040	810 807 211	to	7 240
757 240 591	to	0 650	766 388 433	to	8 460	794 397 709	to	7 780	811 423 021	to	3 110
757 277 371	to	7 700	766 509 421	to	9 660	794 581 741	to	2 040	811 517 221	to	7 239
757 291 591	to	2 730	766 572 901	to	3 020	794 592 122	to	2 150	811 721 101	to	1 130
757 964 251	to	4 280	766 748 500	to	8 521	795 032 251	to	2 340	812 025 721	to	5 900
758 067 001	to	7 090	767 024 341	to	4 370	795 796 291	to	6 350	812 093 073	to	3 130
758 105 221	to	5 250	767 326 471	to	6 590	796 070 139	to	0 160	812 100 821	to	0 840
758 324 941	to	5 000	767 332 561	to	2 950	796 143 151	to	3 630	812 465 251	to	5 610
758 593 628	to	3 650	768 009 841	to	9 960	796 159 725	to	9 740	812 918 341	to	8 670
758 709 038	to	9 060	768 011 489	to	1 520	796 169 306	to	9 340	812 918 701	to	8 760
758 744 101	to	4 160	768 177 980	to	7 990	796 373 406	to	3 430	813 050 491	to	0 520
758 850 883	to	0 900	768 391 081	to	1 170	796 602 961	to	3 050	813 073 171	to	3 200
758 860 951	to	1 550	768 661 569	to	1 650	796 708 441	to	8 500	813 398 476	to	8 550
759 152 851	to	2 880	769 000 051	to	0 080	796 886 281	to	6 430	813 713 971	to	4 000
759 740 941	to	1 090	769 050 841	to	0 900	796 901 701	to	2 000	813 858 121	to	8 150
760 004 596	to	4 610	769 159 081	to	9 178	796 975 466	to	5 590	814 789 330	to	9 349
760 118 191	to	8 250	769 737 496	to	7 510	797 272 917	to	2 950	814 984 656	to	4 680
760 155 001	to	5 090	769 778 491	to	8 730	797 519 441	to	9 460	815 016 020	to	6 030
760 378 002	to	8 020	769 827 331	to	7 450	797 519 731	to	0 240	815 199 410	to	9 420
760 692 722	to	2 749	770 216 071	to	6 100	797 535 181	to	5 330	815 240 491	to	0 520
761 055 460	to	5 480	770 723 281	to	3 400	797 646 151	to	6 180	815 755 591	to	5 620
761 169 781	to	9 810	770 790 451	to	0 480	798 040 053	to	0 080	815 755 622	to	5 650
761 504 941	to	5 120	770 915 150	to	5 490	798 055 813	to	5 830	815 806 381	to	6 680
761 516 836	to	6 910	771 455 551	to	5 610	798 055 891	to	5 950	816 126 834	to	6 870
761 613 588	to	3 600	771 609 661	to	9 690	798 326 371	to	6 520	816 156 721	to	6 780
761 688 631	to	8 690	771 932 551	to	2 580	798 339 167	to	9 210	816 580 903	to	0 920
761 805 199	to	5 240	772 057 224	to	7 440	798 562 411	to	2 440	816 945 571	to	5 600
761 826 106	to	6 120	772 162 660	to	3 070	798 632 461	to	2 490	817 253 011	to	3 280
761 881 171	to	1 560	772 718 615	to	8 640	798 807 151	to	7 510	817 763 881	to	4 060
761 975 641	to	5 670	772 940 140	to	0 160	798 944 761	to	5 030	818 330 562	to	0 610
761 975 886	to	5 895	772 970 886	to	0 940	799 118 616	to	8 640	818 459 641	to	9 670
762 304 144	to	4 170	773 009 419	to	9 430	799 133 191	to	3 220	818 926 273	to	6 320
762 324 931	to	4 960	773 112 031	to	2 060	799 177 626	to	7 650	818 950 351	to	0 380
762 439 261	to	9 290	773 125 387	to	5 410	799 854 751	to	5 200	818 962 492	to	2 530
762 524 158	to	4 220	773 179 320	to	9 410	800 044 320	to	4 410	819 032 341	to	2 730
762 584 872	to	4 970	773 202 989	to	3 140	800 211 901	to	2 440	819 127 054	to	7 080
762 593 431	to	3 460	773 208 991	to	9 290	800 427 530	to	7 540	819 278 540	to	8 670
763 155 160	to	5 180	773 231 311	to	1 340	800 872 741	to	2 830	819 544 681	to	4 740
763 178 631	to	8 660	773 348 739	to	8 940	801 349 801	to	9 830	819 928 441	to	8 650
763 506 001	to	6 060	773 348 739	to	8 940	801 676 681	to	7 100	820 034 406	to	4 430

820 070 761	to 1 540	823 284 931	to 4 990	826 720 201	to 0 230	828 732 331	to 2 390
820 191 342	to 1 360	823 293 031	to 3 210	827 005 671	to 5 830	828 807 781	to 7 840
820 274 856	to 4 880	823 556 011	to 6 100	827 287 861	to 7 950	828 830 952	to 0 963
820 600 171	to 0 230	824 078 341	to 8 370	827 291 502	to 1 520	828 939 781	to 0 050
821 172 241	to 2 360	824 156 325	to 6 340	827 575 381	to 5 470	829 002 721	to 2 870
821 229 661	to 9 720	824 511 252	to 1 270	827 609 085	to 9 100	829 005 301	to 5 540
821 229 743	to 9 780	824 588 281	to 8 370	827 619 811	to 9 840	829 080 241	to 0 330
821 903 731	to 3 910	825 140 397	to 0 460	827 883 511	to 3 600	829 160 986	to 1 000
821 927 841	to 7 850	825 409 651	to 9 680	828 160 441	to 0 530	829 176 841	to 6 930
822 505 801	to 5 830	825 472 171	to 2 200	828 376 201	to 6 260	829 471 561	to 1 590
822 703 442	to 3 470	826 042 898	to 2 920	828 441 602	to 1 630	829 561 065	to 1 080
822 900 991	to 1 020	826 226 644	to 6 670	828 539 316	to 9 340	829 566 481	to 6 510
822 925 951	to 6 100	826 582 951	to 3 430	828 539 341	to 9 370	829 569 931	to 9 960

— Criminal Investigations Group, U.S. Postal Inspection Service, 4-7-22

Verifying U.S. Postal Service Money Orders

Follow these steps to cash a Postal Service™ money order:

1. Check that the amount does not exceed the legal limit: \$1,000 for domestic, and \$700 for international Postal Service money orders.
2. Check that the proper security features are present:
 - When held to the light, a watermark of Benjamin Franklin is repeated from top to bottom on the left side.
 - When held to the light, a dark line (security thread) runs from top to bottom with the word “USPS” repeated.
 - When there is discoloration around the dollar amounts, this might indicate the amounts were changed.

These appear in Postal Service Notice 299, *U.S. Postal Money Order Reference Card*, or online at usps.com/shop/money-orders.htm.

3. If the money order seems suspicious, call the U.S. Postal Service Money Orderxxer Verification System at 866-459-7822.

Provide this information to local banks and retailers, as they also receive Postal Service money orders for cashing.

— Delivery and Retail
Customer Service Operations, 4-7-22

Counterfeit Canadian Money Order Forms

Do Not Cash

To be posted and used by retail window employees. As directed, destroy previous notices. Destroy all interim notices when the numbers listed appear in the *Postal Bulletin*.

671,819,086	683,594,542	687,262,503
676,612,640	684,683,610	687,262,525
677,891,039	686,619,878	687,262,526
678,282,493	686,619,886	687,287,578
678,916,031	686,619,887	687,287,581
679,552,215	686,794,382	687,287,582
679,694,334	686,794,426	694,063,898
679,751,983	686,794,427	694,063,899
679,800,207	686,794,431	694,063,980
681,130,536	687,262,502	701,321,725
681,844,376		

— Criminal Investigations Group,
U.S. Postal Inspection Service, 4-7-22

Toll-Free Number Available to Verify Canadian Money Orders

The Canada Post Corporation has a toll-free number that cashing agents can call to verify the validity of Canadian Postal Money Orders. The number is 800-563-0444.

This toll-free number is printed on the back of the Canadian Postal Money Orders.

— Criminal Investigations Group,
U.S. Postal Inspection Service, 4-7-22

Other Information

Overseas Military/Diplomatic Mail

Mail addressed to military and diplomatic post offices overseas is subject to certain conditions or restrictions of mailing regarding content, preparation, and handling. The APO/FPO/DPO table outlines these conditions by APO/FPO/DPO ZIP Codes™ through the use of footnoted mailing restrictions codes (see the [Restrictions](#) page following the table).

Acceptance clerks must use the table with the Retail System Software terminal to determine which APO/FPO/DPO ZIP Codes are active and which conditions of mailing apply.

The entries under “Changes” appear in bold in the following APO/FPO/DPO table:

Changes

APO/FPO/DPO	Action	Effective Date	See Restrictions
DPO AE 09280	Open	04/08/2022	A-B-B2-C-C1-C2-E-E2-F1-F3-H-I3-L-M-N-R-S-T-V-W-X-Z-Z1

We have eliminated “Not Active” entries from the table below to save space and paper.

APO/FPO/DPO Table

APO/FPO/DPO	See Restrictions	APO/FPO/DPO	See Restrictions	APO/FPO/DPO	See Restrictions	APO/FPO/DPO	See Restrictions
09002	A-B-C2-F-F3-H-N-Q-R-S-V-Z-Z1	09053	B-C-D-E-F3-H-M-R-S-U	09136	B-C-D-E-F1-F3-H-M-P-R-S-U	09216	B,C,F1,F3,M,N,R,S,V,Z1
09002	A-B-C2-F-F3-H-N-Q-R-S-V-Z-Z1	09060	B-C-C2-D-E-F1-F3-H-M-N-R-S-U-Z1	09138	B-C-D-F3-H-M-R-S-U	09227	B-C-D-E-F3-H-M-R-S-U
09003	B-C-D-E-F3-H-M-P-R-S-U	09067	B-C-D-E-F3-H-M-R-S-U	09140	B-C-D-E-F3-H-M-R-S-U	09240	A-B-C1-C2-F-F3-H-N-R-S-V
09004	B-C-D-E-F3-H-M-R-S-U	09068	B-C-C2-D-E-F3-H-R-S-U-Z1	09142	B-C-D-E-F3-H-M-R-S-U	09241	A-B-C2-F3-N-R-S-U-Z1
09005	B-C-D-E-F3-H-M-P-R-S-U	09069	A-B-C-C2-D-E-F3-H-N-R-S-U-V	09154	B-C-D-E-F3-H-M-R-S-U	09242	A-B-C1-C2-F-F3-H-N-R-S-V
09006	B-C-D-E-F3-H-M-R-S-U	09079	B-C-D-E-F3-H-M-R-S-U	09160	B-C-C2-D-F-F1-F3-H-J-L-M-N-R-R1-T-U-V-Z1	09250	B-C-D-E-F3-H-M-R-S-U
09008	A-B-C2-F-F3-H-N-Q-R-S-V-Z-Z1	09094	B-C-C2-D-F3-H-M-P-R-S-Z1	09170	A-B-C2-F-F1-F3-J-L-M-N-R-R1-S-T-V-X-Z1	09261	B-C-C2-D-E-F3-H-M-N-R-S-U-V-Z1
09009	B-C-C2-D-E-F3-H-M-R-S-U-Z1	09095	B-C-D-E-H-M-R-U	09171	A-B-C1-C2-E3-F-F1-F3-J-L-M-N-R-R1-S-T-V-X-Z1	09263	B-C-C2-D-E-F3-H-M-R-S-U
09010	B-C-D-E-F3-H-M-R-S-U2	09096	B-C-D-E-F3-H-M-R-S-U	09172	B-C-D-E-F3-H-M-R-S-U	09264	B-C-E-F3-H-M-R-S-U
09011	B-C-D-E-F3-H-M-R-S-U	09103	A-B-C2-F-F3-H-N-Q-R-S-V-Z-Z1	09173	B-C-D-E-F3-H-M-R-S-U	09265	B-C-D-F-F1-H-J-L-M-N-R-S-T-U-V-Z1
09012	B-C-C2-D-E-F3-H-M-R-S-U-Z1	09104	B-C-C2-D-F3-H-M-R-S-U-Z1	09174	B-C-C2-F-F1-F3-I3-L-N-R-R1-S-T-V-X-Z-Z1	09266	A-B-F3-R-S-U-V-Z1
09013	B-C-D-E-F-F1-F3-H-M-R-S-U-Z1	09107	B-C-D-E-F3-H-M-R-S-U	09175	A-B-C1-C2-E2-F-F1-F3-H1-J-L-M-N-R-R1-S-T-V-W-X-Z1	09276	A-B-F-F3-I3-L-M-N-R-S-T-V-X-Z-Z1
09014	B-C-D-E-F3-H-M-P-R-S-U	09112	B-C-D-E-F3-H-M-R-S-U	09176	A-B-C2-F-F1-F3-J-L-M-N-R-R1-S-T-V-X-Z1	09277	A-B-E-E1-E2-F1-F3-I3-L-N-R-S-T-V-X-Z-Z1
09015	A-B-C-C1-C2-F-F1-F3-J-L-M-N-R-R1-S-V-Z1	09113	A-B-C2-F-F3-H-N-Q-R-S-V-Z-Z1	09177	B-C-D-E-F3-H-M-R-S-U	09278	A-B-F-F3-I3-L-M-N-R-S-T-V-X-Z-Z1
09016	B-C-D-E-F1-F3-H-M-R-S-U	09114	B-C-D-E-F3-H-M-R-S-U	09178	B-C1-C2-E2-F1-F3-I3-L-M-N-R-S-T-V-X-Z-Z1	09279	A-B-E-E1-F-F3-I3-L-M-N-R-S-T-V-X-Z-Z1
09017	A-B-C2-F-F3-H-N-Q-R-S-V-Z-Z1	09115	A-B-C2-F-F3-H-N-R-S-V-Z1	09180	B-C-D-E-F3-H-M-R-S-U	09280	A-B-B2-C-C1-C2-E-E2-F1-F3-H-I3-L-M-N-R-S-T-V-W-X-Z-Z1
09018	A-B-C2-F-F3-H-N-Q-R-S-V-Z-Z1	09116	A-B-C2-F-F3-H-N-R-S-V-Z1	09186	B-C-D-E-F3-H-M-P-R-S-U	09283	A-B-E-E1-F-F3-L-M-N-R-S-T-V-X-Z1
09020	B-C-D-E-F3-H-M-R-S-U	09123	B-C-C2-D-E-F3-H-M-R-S-U-Z1	09203	A-B-C-C1-C2-F-F1-F3-I3-J-L-M-N-R-R1-T-V-Z-Z1	09285	A-B-C-E-E-1-F1-F3-H-I3-L-M-N-R-S-T-V-X-Z-Z1
09021	B-C-C2-D-E-F3-H-M-R-S-U-Z1	09125	A-B-C-C2-F-F1-F3-H-N-R-R1-S-V-V1	09204	B-C-F3-M-N-R-S-V-Z1	09287	B-C2-E1-F1-F3-J-L-N-R-S-T-V-X-Z1
09034	B-C-D-E-F3-H-M-R-S-U	09126	B-C-C2-F3-H-M-P-R-S-Z1	09211	B-C-D-E-F3-H-M-P-R-S-U	09289	B-E2-F1-F3-H1-J-L-M-N-R-R1-S-T-U2-V-X-Z1
09044	B-C-D-F1-F3-H-R-S-U	09128	B-C-D-E-F3-H-M-R-S-U	09213	B-C2-F-F1-F3-H-J-L-M-N-R-R1-T-U-V-Z1	09290	A-B-F1-F3-J-L-M-N-R-S-T-U2-V-X-Z1
09046	B-C-D-E-F3-H-M-R-S-U	09131	B-C-D-E-F3-H-M-R-S-U	09214	B-C-C2-D-E-F3-H-M-R-S-U-Z1	09291	B-C-C1-C2-E2-F1-F3-H1-L-N-R-R1-S-T-V-X-Z1
09049	B-C-D-E-F3-H-M-R-S-U	09135	A-B-C2-F-F3-H-N-R-S-U-V-Z1				

APO/ FPO/ DPO	See Restrictions	APO/ FPO/ DPO	See Restrictions	APO/ FPO/ DPO	See Restrictions	APO/ FPO/ DPO	See Restrictions
09292	A-B-C-C2-E-E2-E3-F1-F3-H-H1-J-L-M-N-R-R1-S-T-V-X-Z1	09464	B-C-C1-C2-F3-R-S-U-Z1	09566	B-C2-E2-E3-F-F1-F3-R-R1-S-V-Z1	09623	B-C-C2-F-F3-R-S-U-V-Z1
09301	A-B-C1-C2-E2-F-F1-F3-H1-I3-L-M-N-R-R1-S-T-U4-V-Z-Z1	09467	B-E-E1-F-F3-J-L-M-N-R-S-T-V-X-Z1	09567	B-C2-E2-E3-F-F1-F3-R-R1-V-Z1	09624	B-C-C2-F-F1-F3-I3-L-N-R-R1-T-U-V-Z-Z1
09302	A-B-C1-C2-F-F1-F3-H-M-N-R-S-V-Z-Z1	09468	B-C-C1-C2-F3-M-R-S-U-Z1	09568	B-V	09625	B-C-C2-F-F3-N-R-S-U-Z1
09305	A-B-C1-E2-F-F1-F3-H1-I3-M-N-R-R1-S-T-V-Z-Z1	09469	B-C-C1-C2-F3-R-S-U-Z1	09569	B-C2-E2-E3-F-F1-F3-R-R1-V-Z1	09627	B-C-C2-F-F3-R-S-U-V-Z1
09306	A-B-C1-E2-F-F1-F3-H1-R-R1-S-U2-V-Z1	09470	B-C-C1-C2-F3-M-R-S-U-Z1	09570	A-B-F-F1-F3-R-R1-S-V	09630	B-C-F-F3-R-S-U-V
09307	B-C-C2-F-F3-N-R-R1-S-Z1	09477	A-B-C-C1-C2-E2-F1-F3-I3-L-M-N-R-R1-S-T-V-W-X-Z-Z1	09573	B-C2-E2-E3-F-F1-F3-R-R1-S-V-Z1	09633	B-C-D-F-F1-F3-M-R-S-U-U1-U2-U3-V-Z1
09309	A-B-C-C1-C2-E2-F-F1-F3-H1-M-N-R-R1-S-V-Z1	09487	A-B-C-C1-C2-E2-F1-F3-I3-L-M-N-R-R1-S-T-V-W-X-Z-Z1	09574	B-F-F1-R-R1-V	09634	A-B-C2-F-F3-M-N-R-S-V
09310	A-B-C1-C2-E2-F-F1-F3-H1-I3-L-M-N-R-R1-S-T-U4-V-Z-Z1	09488	A-B-C-C1-C2-E2-F3-J-L-M-N-S-T-V-W-X-Z1	09575	B-F-F1-R-R1-V	09636	B-C-C2-F-F3-R-S-U-V-Z1
09311	A-B-C1-C2-E2-F-F1-F3-H1-I3-L-M-N-R-R1-S-T-U4-V-Z-Z1	09489	A-B-C-C1-C2-E2-F1-F3-L-M-N-R-R1-S-T-V-W-X-Z1	09576	B-F-F1-R-R1-V	09642	B-C2-F-F1-F3-J-L-M-N-R-T-U-V
09312	A-B-C1-C2-E2-F-F1-F3-H1-I3-L-M-N-R-R1-S-T-U-U4-V-Z-Z1	09490	A-B-C1-C2-E2-F-F1-F3-H1-J-L-M-N-R-R1-S-T-V-X-Z1	09577	B-F3-S-V	09643	B-C-C2-F3-M-R-S-U-V-Z1
09313	A-B-C-C1-E2-F-F1-F2-F3-H1-R-R1-S-V-Z1	09491	A-B-C1-C2-E2-F1-F3-H1-J-L-M-N-R-R1-S-T-V-Z1	09578	B-F-F1-F3-R-R1-S-V-Z1	09645	B-C-C1-E1-E2-F-F1-F3-M-R-S-U-X-Z1
09315	A-B-C1-E2-F-F3-N-R-R1-S-V-Z1	09494	B-C-C1-C2-F3-M-R-S-U-Z1	09579	B-F-F1-R-R1-V	09647	B-C2-F1-F3-M-N-R-S-U-Z1
09316	A-B-C1-E2-F-F1-F3-H1-I3-M-N-R-R1-S-T-V-Z-Z1	09498	B-C1-C2-F-F1-F3-J-L-N-R-R1-T-V-Z1	09581	B-F-F1-F3-R-R1-S-V	09648	B-C2-F3-N-R-S-U-V-Z1
09321	A-B-C1-C2-E2-F-F3-H1-M-N-R-R1-S-V-Z1	09501	B-V	09582	B-C2-F-F1-F3-R-R1-S-V	09649	B-C2-F3-N-R-S-U-Z1
09330	A-B-C1-C2-D-E-E2-F-F1-F3-H-H1-M-R-R1-S-V-Z1	09502	B-V	09583	B-F-F1-F3-I3-J-R-R1-S-V-V1	09701	A-B-C1-C2-F-F1-F3-J-L-M-N-R-R1-T-V-Z1
09333	A-B-C-C1-C2-E2-F-F1-F3-H1-I3-M-N-R-R1-S-V-V1-Z-Z1	09503	B-F-F1-R-R1-V	09588	B-F-F1-F3-R-R1-S-V	09702	B-C-C1-F1-F3-M-R-R1-S-U
09343	A-B-C1-C2-F-F3-M-N-R-R1-S-V-Z1	09504	B-V	09589	B-F-F1-F3-R-S-V	09704	B-C-F-F1-F3-R-R1-S-U2-V
09348	A-B-C1-E2-F-F1-F3-H1-I3-M-N-R-R1-S-T-V-Z-Z1	09505	B-V	09590	B-V	09705	B-C-C1-F1-F3-M-R-R1-S-U
09357	A-B-C1-E2-F-F3-H1-M-R-V-Z1	09506	B-V	09591	B-C2-E2-E3-F-F1-F3-R-R1-S-V-Z1	09706	B-C-C2-F3-M-N-R-S-U-V-Z1
09365	A-B-C-C1-E2-F-F3-H1-M-N-R-V-Z1	09507	B-V	09592	B-F-F1-F3-R-R1-S-V	09707	B-C2-F-F1-F3-J-L-M-N-R-R1-T-V-Z1
09366	A-B-C-C1-E2-F-F1-F3-H-H1-M-R-R1-S-V-Z1	09508	B-F-F1-R-R1-V	09593	B-F-F1-F3-R-S-V	09708	B-C-C1-F1-F3-M-R-R1-S-U
09401	B-C-C1-C2-F3-M-R-S-U-Z1	09509	B-F-F1-R-R1-V	09594	B-C1-E2-F-F1-F3-R-R1-S-V	09709	B-C1-C2-E2-F-F1-F3-H-H1-J-L-N-R-R1-T-V-Z1
09403	B-C-C1-C2-F3-M-R-S-U-Z1	09510	A-B-C1-E2-F-H1-M-R-R1-V-Z1	09595	B-F-F1-F3-I3-J-R-R1-S-V-V1-Z1	09710	B-C-C1-F-F1-J-L-M-N-R-R1-T-U-V-Z1
09410	C2-F-F1-F3-N-R-S-U2	09511	B-F-F1-R-R1-V	09596	B-F-F1-R-R1-V	09712	A-B-C2-F-F3-H-R-S-U-V-Z1
09421	B-C-C1-C2-F3-M-R-S-U-Z1	09512	B-F-F1-F3-R-R1-S-V	09599	B-F-F1-R-R1-V	09714	B-C-C1-F1-F3-M-R-R1-S-U
09447	B-C-C1-C2-F3-M-R-S-U-V-Z1	09513	B-F-F1-F3-R-R1-S-V-V1	09600	B-C-C2-F-F1-F3-R-S-U-Z1	09715	B-F-F1-J-L-M-N-R-T-V-Z1
09454	B-C-C1-C2-F3-M-R-S-U-V-Z1	09514	B-F-F1-F3-R-R1-S-V-V1	09602	B-C-C2-F-F1-F3-N-R-S-U-V	09716	B-C-C2-F-F1-F3-J-L-M-N-R-R1-T-V-Z1
09456	B-C-C1-C2-F3-M-N-R-S-U-V-Z1	09517	B-F-F1-F3-R-R1-S-V	09603	B-C-C2-F-F1-F3-R-S-U-V-Z1	09717	A-B-C2-F3-M-R-S-V-W-Z1
09459	B-C-C1-C2-F3-M-R-S-U-Z1	09520	B-F-F1-F3-R-R1-S-V	09604	B-C-C2-F-F1-F3-P-R-S-U-V-Z1	09718	B-F-F1-J-L-M-N-R-T-U-V-Z1
09461	B-C-C1-C2-F3-M-P-R-S-U-Z1	09522	B-F-F1-F3-R-S-V	09605	B-C-D-F3-H-M-R-S-U-V	09719	B-C-C2-D-F3-M-R-S-U-V-Z1
09463	B-C-C1-C2-F3-M-R-S-U-Z1	09523	B-F-F1-F3-R-R1-S-V	09606	B-C-D-F3-H-M-R-S-U-V	09720	B-C2-F3-M-R-S-U-V-Z1
		09524	B-F-F1-R-R1-V	09608	B-C-F-F3-N-R-S-U-V-Z1	09722	A-B-C2-F-F3-H-N-Q-R-S-V-Z-Z1
		09532	B-F-F1-F3-R-R1-S-V	09609	B-C-C2-F-F3-N-R-S-U-V-Z1	09723	B-C2-F-F1-F3-J-L-M-N-R-R1-T-V-Z1
		09533	B-V	09610	B-C-C2-F-F1-F3-M-R-S-U-V-Z1	09724	B-C-C1-F1-F3-M-R-R1-S-U
		09534	B-F-F1-F3-R-R1-S-V	09613	B-C-F-F3-N-R-S-U-V	09725	A-B-C2-F-F3-H-N-Q-R-S-V-V1-Z-Z1
		09541	A-B-C-F-F3-M-N-S-V-Z1	09614	A-B-C1-C2-E2-F-F1-F3-H1-J-L-M-N-R-R1-T-V-W-Z1	09726	B-F-F1-J-L-M-N-R-T-U-V-Z1
		09542	A-B-C-F-F3-M-N-S-V-Z1	09618	B-C-C2-F-F3-R-S-U-Z1		
		09543	A-B-C-F-F3-M-N-S-V-Z1	09620	B-C-C2-F-F3-R-S-U-V-Z1		
		09544	A-B-C-F-F3-M-N-S-V-Z1	09621	B-C-F-F3-R-U-Z1		
		09545	A-B-C-F-F3-M-N-S-V-Z1	09622	B-C-C2-F-F3-R-S-U-Z1		
		09550	B-F-F1-R-R1-V				
		09554	B-F-F1-R-R1-V				
		09556	B-F-F1-R-R1-V				
		09564	B-F-F1-R-R1-V				
		09565	B-F-F1-F3-R-R1-S-V				

APO/ FPO/ DPO	See Restrictions	APO/ FPO/ DPO	See Restrictions	APO/ FPO/ DPO	See Restrictions	APO/ FPO/ DPO	See Restrictions
09727	A-B-C1-C2-F-F1-F3-J-L-M-N-R-R1-T-V-Z1	09803	A-B-C-C2-E-E2-E3-F1-F3-H-H1-J-M-N-R-R1-S-U-V-Z1	09838	B-C-C2-E2-E3-F-F1-F3-R-S-U-Z1	09898	B-C-C1-C2-E2-F-F1-F2-H1-N-R-R1-S-U2-V-Z1
09728	A-B-C-C1-C2-F-F1-F3-J-L-N-R-R1-T-V-Z1	09804	A-B-C2-F-F1-F3-M-N-R-S-V-Z1	09842	A-B-C1-C2-F-F1-F3-J-L-N-R-R1-T-V-Z1	09902	A-B-C1-C2-E2-F-F3-H1-M-R-R1-S-V-Z1
09729	B-C-C2-F-F3-N-R-R1-S-U-V-Z1	09805	B-C-C2-E2-E3-F-F1-F3-R-R1-S-Z1	09844	A-B-C1-C2-F-F1-F3-J-L-M-N-R-R1-T-V-Z1	09903	B-C1-E2-F1-F3-S-V-Z1
09730	A-B-C1-C2-F-F1-F3-J-L-M-N-R-R1-T-V-Z1	09807	A-B-C1-E2-F-F1-F3-H1-I3-M-N-R-R1-S-T-V-Z-Z1	09845	A-B-C1-C2-E3-F-F1-F3-J-L-M-N-R-R1-T-V-Z1	09904	B-C1-E2-F1-F3-S-V-Z1
09731	A-B-C1-C2-F-F1-F3-J-L-M-N-R-R1-T-V-Z1	09808	A-B-C1-C2-E2-F-F1-F3-H-H1-J-L-N-R-R1-T-V-Z1	09846	A-B-C1-C2-F-F1-F3-J-L-N-R-R1-T-V-Z1	09908	A-B-C2-F-F1-F3-N-R-R1-S-V-Z1
09732	B-F-F3-N-S-V-Z-Z1	09809	B-C1-C2-E3-F-F1-F3-J-L-N-T-V-Z1	09847	B-C-C2-F-F1-F3-J-L-M-N-R-R1-S-T-V-Z1	09909	A-B-C2-F-F1-F3-N-R-R1-S-V-V1-Z1
09733	B-F-F3-N-R-S-V-Z	09810	A-B-C2-F-F1-F3-N-R-S-V-Z1	09848	A-B-C2-F-F3-M-R-S-V-Z1	09974	B-F1-F3-J-L-M-N-R-S-T-U2-V-X-Z1
09734	A-B-C-C1-C2-F-F1-F3-I3-J-L-M-N-R-R1-T-V-Z-Z1	09811	A-B-C-C2-E-E2-E3-F1-F3-H-H1-J-M-N-R-R1-S-U-V-Z1	09853	B-C1-C2-E2-F-F1-F3-H1-N-R-R1-S-U2-V-Z1	09975	B-F1-F3-I3-L-M-N-R-S-T-U2-V-X-Z-Z1
09735	B-F3-N-R-S-V-Z-Z1	09812	B-E2-E3-F-F1-I-J-L-N-R-T-U-V-Z-Z1	09854	A-B-C1-C2-F-F1-F3-J-L-N-R-R1-S-T-V-Z1	09976	B-F1-F3-J-L-M-N-R-S-T-U2-V-X-Z1
09736	A-B-C1-F-F1-F3-J-L-M-N-R-R1-T-V-Z1	09813	A-B-C1-C2-E2-E3-F-F1-F3-J-L-N-R-R1-T-V-Z1	09855	A-B-C-C1-C2-E2-F-F1-F3-H1-M-R-R1-S-U2-V-Z1	09977	B-F1-F3-J-L-M-N-R-S-T-U2-V-X-Z1
09737	A-B-C1-C2-F-F1-F3-I3-J-L-M-N-R-R1-T-V-W-Y-Z-Z1	09814	B-C2-E2-E3-F-F1-F3-I3-J-L-N-R-R1-T-V-Z-Z1	09856	B-C-C1-C2-F-F1-F3-H-H1-J-L-M-N-S-T-V-Z1	34001	A-B-C1-C2-F-F1-F3-J-L-M-N-R-R1-S-T-V-Z1
09738	A-B-C1-C2-F-F1-F3-J-L-M-N-R-R1-T-V-Z1	09815	A-B-C-C2-E-E2-E3-F1-F3-H-H1-J-M-N-R-R1-S-U-V-Z1	09857	A-B-C2-E2-F-F1-F3-I3-L-M-N-R-R1-S-T-V-Z1	34002	B-C1-C2-F-F1-F3-J-L-M-N-R-R1-T-V-Z1
09739	A-B-C1-C2-F-F1-F3-J-L-M-N-R-R1-T-V-Z1	09816	A-B-C1-C2-E2-E3-F-F1-F3-J-L-N-R-R1-T-V-Z1	09858	A-B-C-C1-C2-E2-E3-F1-F3-H-H1-J-M-N-R-R1-S-U-V-Z1	34004	B-C1-C2-F-F1-F3-J-L-M-N-R-R1-T-V-Z1
09741	A-B-C1-C2-E2-F-F1-F3-H1-J-L-M-N-R-R1-T-V-W-Y-Z1	09817	A-B-C1-C2-E2-E3-F-F1-F3-H-H1-J-L-M-N-R-R1-T-V-Z1	09859	B-C-C1-C2-E2-E3-F-F1-F3-H1-R-R1-S-U-Z1	34007	B-F-F1-H-J-M-N-R-R1-V-Z1
09742	A-B-C2-F-F1-F3-J-L-M-N-R-S-T-V-Z1	09818	A-B-C-C2-F-F3-M-R-S-V-Z1	09860	A-B-C2-F-F1-F3-J-L-M-N-R-R1-S-T-V-Z1	34008	B-C1-C2-D-E1-F-F1-H-H1-J-L-M-N-R-R1-T-V-Z1
09743	A-B-C2-F-F3-H-N-Q-R-S-V-Z-Z1	09819	A-B-C-C1-C2-E2-F-F1-F3-H-H1-M-R-R1-S-V-Z1	09862	A-B-C-C2-F-F1-F3-I3-L-M-N-R-R1-S-T-V-X-Z-Z1	34011	B-C1-C2-E2-F-F1-F3-J-L-M-N-R-R1-T-V-Z1
09744	A-B-C1-C2-F-F1-F3-J-L-M-N-R-R1-T-V-Z1	09820	A-B-C2-F-F1-F3-H-H1-J-L-M-N-R-R1-T-V-Z1	09864	A-B-C-C1-C2-E2-F1-F3-L-M-N-R-R1-S-T-V-W-Z1	34020	B-C1-C2-F-F1-F3-J-L-M-N-R-R1-T-V-Z1
09745	A-B-C2-F-F1-F3-M-N-R-R1-S-V-Z1	09821	A-B-C-C2-F-F3-N-R-S-V-Z1	09866	A-B-C-C2-F-F1-F3-I3-L-M-N-R-R1-S-T-V-X-Z-Z1	34021	B-C1-C2-F-F1-F3-J-L-M-N-R-R1-T-V-Z1
09748	A-B-C1-C2-F-F1-F3-J-L-M-N-R-R1-T-V-Z1	09822	A-B-C-C2-F-F3-M-R-S-V-Z1	09870	A-B-C1-C2-E2-F-F1-F3-H1-I3-L-M-N-R-R1-S-T-U4-V-Z-Z1	34022	B-C1-C2-F-F1-F3-J-L-M-N-R-R1-T-V-Z1
09749	A-B-F-F3-H-N-R-S-U-V-Z1	09823	A-B-C1-C2-F-F1-F3-J-L-M-N-R-R1-T-V-Z1	09873	A-B-C1-C2-E2-F-F1-F3-H1-I3-L-M-N-R-R1-S-T-U-U4-V-Z-Z1	34023	B-C1-C2-F-F1-F3-J-L-M-N-R-R1-T-V-Z1
09750	A-B-C1-C2-F-F1-F3-J-L-M-N-R-R1-T-V-Z1	09824	A-B-C-C2-F-F3-M-R-S-V-Z1	09874	A-B-C1-C2-E2-F-F1-F3-H1-I3-L-M-N-R-R1-S-T-U-U4-V-Z-Z1	34024	B-C1-C2-F-F1-F3-J-L-M-N-R-R1-T-V-Z1
09751	B-C-D-E-F3-H-M-R-S-U	09825	A-B-C1-C2-F-F1-F3-J-L-M-N-R-R1-T-V-Z1	09875	A-B-C1-C2-E2-F-F1-F3-H1-I3-L-M-N-R-R1-S-T-U-U4-V-Z-Z1	34025	B-F-F1-F3-J-L-M-N-R-R1-T-V-Z1
09752	B-C-D-F1-F3-H-R-S-U	09826	A-B-C1-C2-E1-E2-E3-F-F1-F3-J-L-M-N-R-R1-T-V-W-Z1	09877	A-B-C-C2-E-E2-E3-F1-F3-H-H1-J-M-N-R-R1-S-U-V-Z1	34030	B-C1-C2-F-F1-F3-J-L-M-N-R-R1-T-V-Z1
09753	A-B-C-C1-C2-D-E-F-F3-H-M-N-R-S-V-W-Z1	09827	A-B-F-F1-J-L-M-N-R-T-V-Z1	09879	A-B-C1-C2-E2-F-F1-F3-H1-I3-L-M-N-R-R1-S-T-U4-V-Z-Z1	34031	B-C1-C2-F-F1-F3-J-L-M-N-R-R1-T-V-Z1
09754	A-B-C2-F-F3-H-L-N-Q-R-S-V-Z-Z1	09828	A-B-C1-C2-F-F1-F3-I3-L-N-R-R1-T-V-Z-Z1	09880	A-B-C1-C2-E2-F-F1-F3-H1-I3-L-M-N-R-R1-S-T-U-V-Z1	34032	B-C1-C2-F-F1-F3-J-L-M-N-R-R1-T-V-Z1
09755	A-B-C-C1-C2-D-F-F1-F3-J-L-M-N-Q-R-R1-S-T-V-Z1	09829	B-C-N-R-V-Z1	09889	B-E2-F-H1-N-R-R1-U2-V-Z1	34033	B-C1-C2-F-F1-F3-I3-L-M-N-R-T-V-Z-Z1
09759	A-B-C-C1-C2-E2-F-F1-F3-J-L-N-R-R1-T-V-Z1	09830	B-C-F-F1-F3-J-L-M-N-R-R1-S-T-V-Z1	09892	A-B-C1-C2-E2-F-F1-F3-J-L-M-N-R-R1-T-V-Z1	34034	B-C1-C2-F-F1-F3-I3-L-M-N-R-R1-T-V-Z-Z1
09761	B-C2-F-F1-F3-M-R-R1-S-V-Z-Z1	09831	B-C1-C2-F-F1-F3-J-L-N-R-R1-T-V-Z1	09895	A-B-C1-C2-E2-F-F1-F3-J-L-M-N-R-R1-T-V-Z1	34035	B-C1-C2-F-F1-F3-H-J-L-M-N-R-R1-T-V-Z1
09762	A-B-C2-E3-F-F1-F3-J-L-N-R-R1-T-V-Z1	09834	B-C-C2-E2-E3-F-F1-F3-R-R1-S-U-Z1			34036	B-C1-C2-F-F1-F3-J-L-M-N-R-R1-T-V-Z1
09769	A-B-C-C1-C2-F-F1-F3-J-L-M-N-R-R1-T-V-Z1	09836	A-B-C1-C2-F-F1-F3-J-L-M-N-R-R1-V-Z1			34037	B-C-C1-C2-F-F1-F3-H-J-L-M-N-R-R1-T-V-Z1
09777	A-B-C-C1-C2-E1-F-F1-F3-J-L-M-N-R-R1-T-V-Z1	09837	B-E2-E3-F1-F3-R-S-V-Z1			34039	B-C1-C2-F-F1-J-L-M-N-T-V-Z1
09780	A-B-C2-F-F3-H-N-R-S-V					34041	B-C1-C2-F-F1-F3-J-L-M-N-R-R1-T-V-Z1
09801	A-B-C1-E2-F-F3-H1-M-N-R-R1-S-V-Z1					34042	A-B-C-F-F1-F3-M-N-R-S-U-V-W-Z1
09802	A-B-C-C2-D-F-F1-F3-H-H1-I3-L-M-N-R-R1-S-T-V-W-Z-Z1					34050	B-V

APO/ FPO/ DPO	See Restrictions	APO/ FPO/ DPO	See Restrictions	APO/ FPO/ DPO	See Restrictions	APO/ FPO/ DPO	See Restrictions
34054	B-V	96269	A-B-F1-F2-F3-R-S-U-Z1	96387	B-F3-M-R-S-W	96604	B-V
34055	B-C1-C2-F-F1-F3-J-L-M-N-R-R1-T-V-Z1	96271	A-F-F3-M-P-R-S-U	96388	B-F3-M-R-S-W	96605	B-V+B559
34058	B-C2-F-F1-F2-F3-R-R1-S-V-Z1	96273	A-B-F-F1-F3-M-R-S-U	96389	B-M-W	96606	B-F3-R-S-V
34060	B-C1-C2-E2-F-F1-F3-J-L-M-N-R-R1-T-V-Z1	96275	A-B-F-F1-F3-M-R-S-U	96401	B-C-F-F3-N-R-S-V-V1-Z1	96607	B-V
34066	B-C1-C2-F-F1-F3-I3-J-L-M-N-R-R1-S-T-V-X-Z1	96276	A-B-C-F1-R	96502	A-C1-C2-F-F1-F3-J-M-N-R-R1-S-T-U-V	96608	B-E2-F-H1-R1-U2-V-Z1
34067	B-C1-C2-F-F1-F3-J-L-M-N-R-R1-S-T-V-X-Z1	96278	A-B-C-F1-F3-R-S-U	96504	A-B-C-C1-C2-F-F1-F3-I3-L-M-N-R-R1-T-V-W-Z1	96609	B-E2-F-H1-R1-U2-V-Z1
34068	B-C1-C2-F-F1-F3-J-L-M-N-R-R1-S-T-V-X-Z1	96283	A-B-F-F1-F3-S-U	96505	A-B-C-C1-C2-F-F1-F3-I3-L-M-N-R-R1-S-T-V-W-Z1	96610	B-E2-F-H1-R1-U2-V-Z1
34069	B-C1-C2-F-F1-F3-I3-J-L-M-N-R-R1-S-T-V-X-Z1	96284	A-B-F-F1-F3-R-S-U	96507	A-B-C1-C2-F-F1-H-J-L-M-N-T-V-Z1	96611	B-E2-F-H1-R1-U2-V-Z1
34078	B-F1-F3-N-R-S-V-Z1	96297	A-B-F-F1-F3-R-S-U	96510	B-I3-N-V	96612	B-V
34080	B-F-F1-R-R1-V	96300	A-B-F3-M-R-S-V-Z1	96511	B-I3-N-V	96613	B-V
34081	B-F-F1-R-R1-V	96301	A-B-F-F3-M-N-R-S-U2-W	96515	B-C-D-E1-F-F1-F3-H-H1-M-N-R-S-T-Z1	96615	B-F-F1-R-R1-V
34082	B-F-F1-R-R1-V	96303	B-C1-C2-F-F1-H-J-L-M-N-T-V-W-Z1	96516	B-C-D-E1-E2-F-F1-F3-H-H1-M-N-R-S-T-Z1	96616	B-C2-F-F1-F3-R-R1-S-V
34083	B-F-F1-R-R1-V	96306	B-F-F1-F2-F3-H-M-R-S-W-Z1	96517	B-C-D-E1-E2-F-F1-F3-H-H1-M-N-R-T-U-V-Z1	96619	B-F1-F3-R-S-V
34084	B-F-F1-R-R1-V	96310	B-F3-M-R-S-W	96520	B-F-N-U3-V	96620	B-F-F1-F3-R-R1-S-V
34085	B-C-C1-C2-E2-E3-F-F1-F3-H1-J-R-R1-S-T-V-V1	96311	B-F3-M-R-S-W	96521	B-C1-C2-F-F1-J-L-M-N-R-R1-S-T-V-Z1	96628	B-F-F1-F3-R-R1-S-V
34086	B-C-C1-C2-E2-E3-F-F1-F3-H1-J-R-R1-S-T-V-V1	96315	B-F-F1-F3-H-M-R-S-W	96530	A-B-C1-C2-F-F1-H-H1-J-L-M-N-R-R1-S-T-V-Z1	96629	B-F-F1-F3-R-R1-S-V
34087	B-E2-F-F1-F3-R-R1-S-V	96319	B-C-C2-F3-M-R-S-V-W	96531	A-B-C-F-F1-F3-H-M-N-R-S-U-V	96632	B-F-F1-F3-R-R1-S-V
34088	B-F-F1-R-R1-V	96321	B-F-F1-F2-F3-H-M-R-S-W-Z1	96532	A-B-C1-C2-F-F1-H-J-L-M-N-R-R1-S-T-V-Z1	96633	B-V
34089	B-F-F1-R-R1-S-V	96322	B-F-F1-F2-F3-H-M-R-S-W-Z1	96533	A-B-C1-C2-F-F1-H-J-L-M-N-R-R1-S-T-V-Z1	96634	B-V
34090	B-F-F1-R-R1-V	96326	B-C-F-F3-M-R-S-W	96534	A-B-F-F1-F2-F3-S-U-Z1	96642	B-V
34091	B-E2-E3-F-F1-F3-R-R1-S-V-Z1	96328	B-C-F3-M-R-S-W	96535	A-B-C1-C2-F-F1-J-L-M-N-R-R1-S-T-V-Z1	96643	B-F-F1-F3-R-R1-S-V
34092	B-F-F1-F3-R-R1-S-V	96331	A-B-F-F1-F3-J-L-M-N-R-S-U2-W	96537	B-V-Z1	96644	B-V
34093	B-F-F1-F3-R-R1-S-V	96336	B-C-F3-M-R-S-V-W	96540	B-F1-F2-F3-S-V-Z1	96645	B-V
34094	B-F-F1-F3-R-R1-S-V	96337	B-F-F1-F3-M-R-R1-S-W	96542	B-F-F1-F2-F3-S-V-Z1	96649	B-F-F1-F3-R-R1-S-V
34095	B-F-F1-R-R1-V	96338	A-B-F-F3-M-R-S-U2-W	96543	B-F-F1-F2-F3-P-S-V-Z1	96650	B-F-F1-R-R1-V
96201	A-B-F-F1-F3-M-R-S-U	96339	A-B-F-F3-M-R-S-U2-W	96548	A-B-F-F1-F3-H-M-R-S-U	96657	B-F-F1-F3-R-R1-S-V
96202	A-B-F-F1-F3-M-R-S-U	96343	A-F-F3-M-P-R-S-U2	96549	A-B-C1-C2-F-F1-H-J-L-M-N-R-R1-S-T-V-Z1	96660	B-F-F1-F3-R-R1-S-V
96203	A-B-F-F1-F3-M-R-S-U	96346	B-F-F1-F2-F3-H-M-R-S-W-Z1	96550	A-B-H-M-N-U-V-Z1	96661	B-F-F1-F3-R-R1-S-V
96204	A-B-F-F1-F3-M-R-S-U	96347	B-C2-F-F1-F2-F3-H-M-R-S-W-Z1	96551	A-B-C1-C2-F-F1-H-J-L-M-N-R-R1-S-T-V-Z1	96662	B-F-F1-F3-R-R1-S-V
96205	A-B-F-F1-F3-M-R-S-U	96349	B-C2-F-F1-F2-F3-H-M-R-S-W-Z1	96552	B-Z1	96663	B-F-F1-F3-R-R1-S-V-V1
96206	A-B-F-F1-F3-M-R-S-U	96350	B-F-F1-F2-F3-H-M-R-S-W-Z1	96553	A-B-F-F1-H-M-N-R-U	96664	B-V
96207	A-B-F-F1-F3-M-R-S-U-V	96351	B-C2-F-F1-F2-F3-H-M-R-S-W-Z1	96554	A-B-C1-C2-F-F1-H-J-L-M-N-R-R1-S-T-V-Z1	96665	B-V
96208	A-B-F-F1-F3-M-R-S-U	96362	B-F-F1-F2-M-W-Z1	96555	A-B-F-F3-M-R-S-V	96666	B-F3-R-S-V
96209	A-B-C1-C2-F-F1-J-L-M-N-T-U-V-Z1	96365	B-C-F3-M-R-S-V-W	96557	A-B-F-F3-M-R-S-V	96667	B-F-F1-F3-R-R1-S-V
96210	A-B-C1-C2-F-F1-F3-I3-L-M-N-R-R1-T-V-Z1	96367	B-C-F3-L-M-R-S-W	96562	A-B-C1-C2-E2-E3-F-F1-H-H1-I3-L-M-N-R-R1-S-T-V-Z1	96668	B-F-F1-R-R1-V
96212	B-F-F1-F2-H-M-W-Z1	96368	B-C-F3-M-R-S-W	96577	A-B-F-F3-H-M-N-R-S-U	96669	B-F-F3-R-R1-S-V
96213	A-B-C-F1-F3-R-S-U	96370	B-F-F1-F2-H-M-W-Z1	96578	B-F1-F3-H-J-N-R-S	96670	B-V
96214	A-B-C-F1-F3-R-S-U	96371	B-F-F3-M-R-S-W	96595	B-F-F3-R-S-V-Z1	96671	B-F-F1-F3-R-R1-S-V
96218	A-B-F-F1-F3-M-R-S-U	96372	B-M-W	96598	B-F3-I3-N-R-S-V-V1	96672	B-C2-F-F1-F3-R-R1-S-V
96224	A-B-F-F1-F3-M-R-S-U	96373	B-M-W	96599	B-F3-N-R-S-V	96673	B-F3-S-V
96251	A-B-F-F1-F3-M-R-S-U	96374	B-M-W	96601	B-V	96674	B-F-F1-F3-R-R1-S-V
96257	A-B-F-F1-F3-S-U	96375	B-F3-M-R-S-W	96602	B-V	96675	B-F-F1-F3-R-R1-S-V
96258	A-F-F3-M-P-R-S-U	96376	B-F3-M-R-S-W	96603	B-V	96677	B-F-F1-F3-R-R1-S-V
96260	A-B-F-F1-F3-M-R-S-U	96377	B-F-F3-M-R-S-W			96678	B-F-F1-F3-R-R1-S-V
96262	A-B-F-F1-F3-R-S-U-V-Z1	96378	B-M-W			96679	B-F-F1-R-R1-V
96264	A-B-C-F1-F3-R-S-U	96379	B-F3-M-R-S-W			96681	B-V
96266	A-B-C-F1-F3-R-S-U	96380	B-F3-M-R-S-W			96682	B-V
		96382	B-F-F3-M-R-S-W			96683	B-F-F1-F3-R-R1-S-V
		96384	B-F-F3-M-R-S-W			96686	B-V
		96385	B-F-F3-M-R-S-W			96691	B-F-F1-F3-R-R1-S-V
		96386	B-F3-M-S-W			96692	B-F-F1-F3-R-R1-S-V
						96693	E2-F-F3-R-R1-S-V
						96694	B-E2-F-F1-F3-I3-J-R-R1-S-V-V1-Z
						96695	B-F-F1-R-R1-V
						96696	B-F-F1-R-R1-V
						96698	B-V

RESTRICTIONS

LEGEND

PS Form 2976, *Customs — CN 22 (Old C 1) and Sender's Declaration* (green label)

PS Form 2976-A, *Customs Declaration and Dispatch Note*

PS Form 2976-B, *Priority Mail Express International Shipping Label and Customs Form*

ATF	= Bureau of Alcohol, Tobacco, Firearms, and Explosives
Box C	= Department of State (DOS) contractor personnel
Box R	= Retired military personnel
DPO	= Diplomatic Post Office
MPO	= Military Post Office
PACT	= Prevent All Cigarette Trafficking Act
PAL	= Parcel Airlift
PMEMS	= Priority Mail Express Military Service
PUB 52	= Publication 52, <i>Hazardous, Restricted, and Perishable Mail</i>
SAM	= Space Available Mail
USDA	= United States Department of Agriculture

Note: Mail order catalogs are prohibited as SAM or PAL mail.

A. Securities, currency, or precious metals, including in their raw, unmanufactured state, are prohibited. Official Mail shipments are exempt from this restriction.

A1. Reserved for future use.

A2. Reserved for future use.

B. Other than for PMEMS and the exceptions listed below, a customs declaration PS Form 2976 or PS Form 2976-A is required for all items weighing 16 ounces or more, and for all items (regardless of weight) containing potentially dutiable mail contents (e.g., merchandise or goods) addressed to or from this ZIP Code. Other than the exceptions listed below, all PMEMS mailpieces (regardless of mail contents or weight) addressed to or from this ZIP Code must bear a properly completed PS Form 2976-B. The surface area of the address side of the mailpiece must be large enough to contain the applicable customs declaration. The following exceptions apply to known mailers, who for this purpose are defined as follows:

- Business mailers who enter volume mailings through business mail entry units or other bulk mail acceptance locations, pay postage through advance deposit accounts, use permit imprints for postage payment, and submit completed postage statements at the time of entry that certify that the mailpieces contain no dangerous materials that are prohibited by postal regulations. Such business mailers are exempt from providing customs documentation on non-dutiable letters and printed matter.
- All federal, state, and local government agencies whose mailings are regarded as "Official Mail." Such agencies are exempt from providing customs documentation, except for any items addressed to an MPO or DPO to which restriction "B2" applies.

B2. All federal, state, and local government agencies must complete customs documentation when sending potentially dutiable mail addressed to or from this MPO or DPO.

C. Cigarettes and other tobacco products, including tobacco leaves, chewing and pipe tobacco, snuff, and cigars are prohibited, including those that are authorized in Publication 52 under PACT.

C1. Obscene and horror articles, images, prints, paintings, cards, films, videotapes, comic books, etc., are prohibited.

C2. E-cigarettes and related products (e.g., nicotine liquids, e-liquids, parts, or supplies) are prohibited.

D. Coffee is prohibited.

E. Medicines (prescription, over-the-counter, vitamins, and supplements) are prohibited when mailed to individuals for human or animal use. This prohibition does not apply when medicines are sent as Official Mail only between specifically designated agencies such as pharmaceutical distributors, hospitals, clinics, and pharmacies.

E1. Mailers are responsible to ensure that all medicines and vaccines conform to host nation laws.

E2. Any matter depicting nude or seminude persons, pornographic, or sexual items are prohibited. Non-authorized political materials are prohibited. Religious materials contrary to the Islamic faith are prohibited in bulk quantities, but individual items for the personal use of the addressee are permissible.

E3. Radio transceivers, cordless/cellular telephones, global positioning systems, scanners, base stations, and handheld transmitters are prohibited.

F. Firearms of any type are prohibited, except firearms mailed to or by official U.S. government agencies. This restriction does not apply to firearms mailed from this MPO ZIP Code, provided ATF and USPS regulations are met. Antique firearms do not require an ATF form.

F1. Weapons of any type are prohibited.

F2. Mailing firearms to or from this MPO ZIP Code is restricted to one shotgun and one single shot .22 caliber rifle per individual.

F3. Replica weapons and inert explosive devices (such as grenades) and weapons parts are prohibited.

G. Parcels of any class are prohibited.

H. Meats, including preserved meats, bones, skin, hair, feathers, horns or hoofs of hoofed animals, and wool samples whether hermetically sealed or not, are prohibited.

H1. Pork or pork by-products are prohibited.

I. Reserved for future use.

I1. Reserved for future use.

I2. Reserved for future use.

I3. Mail of all classes must fit in a mail sack. Mail may not exceed the following dimensions:

- Maximum length 27 inches.
- Maximum width 14 inches.
- Maximum height 14 inches.

J. Standard Post and Parcel Select parcels may not exceed 108 inches in length and girth combined.

K. Reserved for future use.

L. All Official Mail is prohibited.

M. Fruits, vegetables, live animals, and live plants are prohibited.

N. Registered Mail service is prohibited.

O. Reserved for future use.

P. Official Mail only.

Q. Mail may not exceed 66 pounds, and size is limited to 42 inches maximum length and 72 inches maximum length and girth combined.

R. All alcoholic beverages, including those mailable under Publication 52, Part 421, are prohibited.

R1. Materials used in the production of alcoholic beverages (i.e., distilling material, hops, malts, yeast, etc.) are prohibited.

S. Synthetic cannabinoids used to stimulate the central nervous system commonly known as "synthetic marijuana," "K2," or "Spice" are prohibited.

T. Mailings of household shipments and case lots of food to or from an MPO require military transportation office approval prior to mailing. Mailings to or from a DPO require pre-approval from the Diplomatic Pouch and Mail Director.

U. Mail addressed to Retirees (Box R) is limited to 16 ounces and up to a 90-day supply of TRICARE medications. This restriction does not apply to mail endorsed "Free Matter for the Blind or Handicapped."

U1. Mail is limited to First-Class Mail items, including audio and video media, weighing 13 ounces or less. This limitation does not apply to Official Mail.

U2. Retirees (Box R) are not authorized mail service.

U3. Reserved for future use.

U4. Mail addressed to Box C is limited to 2 lbs.

V. PMEMS is not available.

V1. Electronic Delivery status information for Extra Services is not available on *USPS.com*. Manual record of delivery may be available upon request.

W. Hermetically sealed packages of meat products bearing USDA certification, such as dried beef, salami, and sausage, may be mailed. 200 grams of tobacco per parcel are permitted duty free.

X. Cremated remains are prohibited.

Y. Mail is limited to First-Class Mail and Priority Mail items only. This restriction also applies to Official Mail.

Z. No outside pieces (OSPs).

Z1. The following restriction is applicable only to International Service Centers (ISC)/Exchange Offices. An Anti-Pilferage Seal (Item No O817E or O818A) is required on all pouches and sacks.

— *International Network Operations,
Global Business, 4-7-22*

Freely Associated States Restrictions

We list the mailing restrictions for Freely Associated States (FAS) in the Pull-Out section of the *Postal Bulletin*. All FAS Restrictions will be updated periodically.

Freely Associated States

Mail addressed to freely associated states is subject to certain conditions or restrictions of mailing regarding content, preparation, and handling. The following FAS Restrictions table outlines these conditions as listed by each affected FAS ZIP Code™ through the use of footnoted mailing restrictions codes (see the [Restrictions](#) following the table). For more information on available extra services for FAS destinations, see *Mailing Standards of the United States Postal Service, Domestic Mail Manual (DMM®)*, part 503.

Acceptance clerks must use the table with the Retail System Software terminal to determine which FAS ZIP Codes are active and which conditions of mailing apply.

FAS Restrictions Table

FAS Table	See Restrictions
96939	A, B
96940	A, B
96941	A, B
96942	A, B
96943	A, B
96944	A, B
96960	A, B
96970	A, B, D
Marshall Islands	C
Federated States of Micronesia	C

RESTRICTIONS LEGEND

PS Form 2976, *Customs Declaration CN 22 – Sender's Declaration*

PS Form 2976-A, *Customs Declaration and Dispatch Note*

FAS = Freely Associated State

- A.** Bank currency (coin and paper) is prohibited.
- B.** Signature Confirmation, Signature Confirmation Restricted Delivery, Adult Signature Requested, Adult Signature Restricted Delivery, Certified Mail Adult Signature Required, and Certified Mail Adult Signature Restricted Delivery not available.
- C.** Collect on Delivery is prohibited.
- D.** Betel nut (Areca catechu) is prohibited.

— *Asia-Pacific Relations,
Global Business, 4-7-22*

Labeling List Changes (continued)

Column A Destination ZIP Codes	Column B Scheme Bundle/Container Placard (Change From)	Column C Facility Container Placard (Change From)	Column B Scheme Bundle/Container Placard (Change To)	Column C Facility Container Placard (Change To)
19426	FSS TELFORD PA 18969	FSS NDC PHILADELPHIA PA 192	FSS TELFORD PA 18969	FSS PHILADELPHIA PA 190
19446	FSS LANSDALE PA 19446	FSS NDC PHILADELPHIA PA 192	FSS LANSDALE PA 19446	FSS PHILADELPHIA PA 190
19462	FSS BLUE BELL PA 19422	FSS NDC PHILADELPHIA PA 192	FSS BLUE BELL PA 19422	FSS PHILADELPHIA PA 190
19473	FSS TELFORD PA 18969	FSS NDC PHILADELPHIA PA 192	FSS TELFORD PA 18969	FSS PHILADELPHIA PA 190

Newly Added

Column A Destination ZIP Codes	Column B Scheme Bundle/ Container Placard (Added To)	Column C Facility Container Placard (Added To)
01001	FSS AGAWAM MA 01001	FSS NDC SPRINGFIELD MA 011
01007	FSS BELCHERTOWN MA 01007	FSS NDC SPRINGFIELD MA 011
01013	FSS CHICOPEE MA 01013	FSS NDC SPRINGFIELD MA 011
01020	FSS CHICOPEE MA 01013	FSS NDC SPRINGFIELD MA 011
01022	FSS CHICOPEE MA 01013	FSS NDC SPRINGFIELD MA 011
01027	FSS BELCHERTOWN MA 01007	FSS NDC SPRINGFIELD MA 011
01028	FSS EAST LONGMEADOW MA 01028	FSS NDC SPRINGFIELD MA 011
01030	FSS AGAWAM MA 01001	FSS NDC SPRINGFIELD MA 011
01036	FSS EAST LONGMEADOW MA 01028	FSS NDC SPRINGFIELD MA 011
01040	FSS AGAWAM MA 01001	FSS NDC SPRINGFIELD MA 011
01056	FSS EAST LONGMEADOW MA 01028	FSS NDC SPRINGFIELD MA 011
01060	FSS BELCHERTOWN MA 01007	FSS NDC SPRINGFIELD MA 011
01062	FSS BELCHERTOWN MA 01007	FSS NDC SPRINGFIELD MA 011
01075	FSS AGAWAM MA 01001	FSS NDC SPRINGFIELD MA 011
01077	FSS BELCHERTOWN MA 01007	FSS NDC SPRINGFIELD MA 011
01085	FSS BELCHERTOWN MA 01007	FSS NDC SPRINGFIELD MA 011
01089	FSS AGAWAM MA 01001	FSS NDC SPRINGFIELD MA 011
01095	FSS EAST LONGMEADOW MA 01028	FSS NDC SPRINGFIELD MA 011
01106	FSS EAST LONGMEADOW MA 01028	FSS NDC SPRINGFIELD MA 011
01118	FSS EAST LONGMEADOW MA 01028	FSS NDC SPRINGFIELD MA 011
01128	FSS EAST LONGMEADOW MA 01028	FSS NDC SPRINGFIELD MA 011
01151	FSS EAST LONGMEADOW MA 01028	FSS NDC SPRINGFIELD MA 011

Column A Destination ZIP Codes	Column B Scheme Bundle/ Container Placard (Added To)	Column C Facility Container Placard (Added To)
01201	FSS PITTSFIELD MA 01201	FSS NDC SPRINGFIELD MA 011
01220	FSS PITTSFIELD MA 01201	FSS NDC SPRINGFIELD MA 011
01226	FSS PITTSFIELD MA 01201	FSS NDC SPRINGFIELD MA 011
01230	FSS PITTSFIELD MA 01201	FSS NDC SPRINGFIELD MA 011
01238	FSS PITTSFIELD MA 01201	FSS NDC SPRINGFIELD MA 011
01240	FSS PITTSFIELD MA 01201	FSS NDC SPRINGFIELD MA 011
01247	FSS PITTSFIELD MA 01201	FSS NDC SPRINGFIELD MA 011
01267	FSS PITTSFIELD MA 01201	FSS NDC SPRINGFIELD MA 011
06001	FSS AVON CT 06001	FSS NDC SPRINGFIELD MA 011
06002	FSS AVON CT 06001	FSS NDC SPRINGFIELD MA 011
06010	FSS BRISTOL CT 06010	FSS NDC SPRINGFIELD MA 011
06011	FSS BRISTOL CT 06010	FSS NDC SPRINGFIELD MA 011
06013	FSS BURLINGTON CT 06013	FSS NDC SPRINGFIELD MA 011
06016	FSS BROAD BROOK CT 06016	FSS NDC SPRINGFIELD MA 011
06026	FSS AVON CT 06001	FSS NDC SPRINGFIELD MA 011
06029	FSS BROAD BROOK CT 06016	FSS NDC SPRINGFIELD MA 011
06030	FSS BROAD BROOK CT 06016	FSS NDC SPRINGFIELD MA 011
06032	FSS BROAD BROOK CT 06016	FSS NDC SPRINGFIELD MA 011
06033	FSS BURLINGTON CT 06013	FSS NDC SPRINGFIELD MA 011
06037	FSS BERLIN CT 06037	FSS NDC SPRINGFIELD MA 011
06040	FSS MANCHESTER CT 06040	FSS NDC SPRINGFIELD MA 011
06042	FSS MANCHESTER CT 06040	FSS NDC SPRINGFIELD MA 011
06043	FSS MANCHESTER CT 06040	FSS NDC SPRINGFIELD MA 011
06051	FSS BERLIN CT 06037	FSS NDC SPRINGFIELD MA 011
06052	FSS BERLIN CT 06037	FSS NDC SPRINGFIELD MA 011
06053	FSS BERLIN CT 06037	FSS NDC SPRINGFIELD MA 011

Column A Destination ZIP Codes	Column B Scheme Bundle/ Container Placard (Added To)	Column C Facility Container Placard (Added To)
06062	FSS BROAD BROOK CT 06016	FSS NDC SPRINGFIELD MA 011
06066	FSS MANCHESTER CT 06040	FSS NDC SPRINGFIELD MA 011
06067	FSS BURLINGTON CT 06013	FSS NDC SPRINGFIELD MA 011
06070	FSS BURLINGTON CT 06013	FSS NDC SPRINGFIELD MA 011
06071	FSS BERLIN CT 06037	FSS NDC SPRINGFIELD MA 011
06073	FSS BURLINGTON CT 06013	FSS NDC SPRINGFIELD MA 011
06074	FSS MANCHESTER CT 06040	FSS NDC SPRINGFIELD MA 011
06078	FSS AVON CT 06001	FSS NDC SPRINGFIELD MA 011
06081	FSS BURLINGTON CT 06013	FSS NDC SPRINGFIELD MA 011
06082	FSS BROAD BROOK CT 06016	FSS NDC SPRINGFIELD MA 011
06083	FSS BROAD BROOK CT 06016	FSS NDC SPRINGFIELD MA 011
06084	FSS AVON CT 06001	FSS NDC SPRINGFIELD MA 011
06085	FSS AVON CT 06001	FSS NDC SPRINGFIELD MA 011
06088	FSS BROAD BROOK CT 06016	FSS NDC SPRINGFIELD MA 011
06089	FSS AVON CT 06001	FSS NDC SPRINGFIELD MA 011
06092	FSS BROAD BROOK CT 06016	FSS NDC SPRINGFIELD MA 011
06093	FSS AVON CT 06001	FSS NDC SPRINGFIELD MA 011
06095	FSS AVON CT 06001	FSS NDC SPRINGFIELD MA 011
06096	FSS BROAD BROOK CT 06016	FSS NDC SPRINGFIELD MA 011
06105	FSS HARTFORD CT 06105	FSS NDC SPRINGFIELD MA 011
06106	FSS HARTFORD CT 06105	FSS NDC SPRINGFIELD MA 011
06107	FSS BRISTOL CT 06010	FSS NDC SPRINGFIELD MA 011
06108	FSS EAST HARTFORD CT 06108	FSS NDC SPRINGFIELD MA 011
06109	FSS EAST HARTFORD CT 06108	FSS NDC SPRINGFIELD MA 011
06110	FSS HARTFORD CT 06105	FSS NDC SPRINGFIELD MA 011
06111	FSS BRISTOL CT 06010	FSS NDC SPRINGFIELD MA 011
06112	FSS HARTFORD CT 06105	FSS NDC SPRINGFIELD MA 011
06114	FSS EAST HARTFORD CT 06108	FSS NDC SPRINGFIELD MA 011
06117	FSS BRISTOL CT 06010	FSS NDC SPRINGFIELD MA 011
06118	FSS EAST HARTFORD CT 06108	FSS NDC SPRINGFIELD MA 011
06119	FSS HARTFORD CT 06105	FSS NDC SPRINGFIELD MA 011
06120	FSS HARTFORD CT 06105	FSS NDC SPRINGFIELD MA 011
06128	FSS EAST HARTFORD CT 06108	FSS NDC SPRINGFIELD MA 011

Column A Destination ZIP Codes	Column B Scheme Bundle/ Container Placard (Added To)	Column C Facility Container Placard (Added To)
06133	FSS HARTFORD CT 06105	FSS NDC SPRINGFIELD MA 011
06138	FSS EAST HARTFORD CT 06108	FSS NDC SPRINGFIELD MA 011
06231	FSS AMSTON CT 06231	FSS NDC SPRINGFIELD MA 011
06237	FSS AMSTON CT 06231	FSS NDC SPRINGFIELD MA 011
06238	FSS AMSTON CT 06231	FSS NDC SPRINGFIELD MA 011
06241	FSS AMSTON CT 06231	FSS NDC SPRINGFIELD MA 011
06250	FSS AMSTON CT 06231	FSS NDC SPRINGFIELD MA 011
06268	FSS AMSTON CT 06231	FSS NDC SPRINGFIELD MA 011
06279	FSS AMSTON CT 06231	FSS NDC SPRINGFIELD MA 011
06281	FSS AMSTON CT 06231	FSS NDC SPRINGFIELD MA 011
06320	FSS AMSTON CT 06231	FSS NDC SPRINGFIELD MA 011
06357	FSS AMSTON CT 06231	FSS NDC SPRINGFIELD MA 011
06371	FSS AMSTON CT 06231	FSS NDC SPRINGFIELD MA 011
06385	FSS AMSTON CT 06231	FSS NDC SPRINGFIELD MA 011
06401	FSS ANSONIA CT 06401	FSS NDC SPRINGFIELD MA 011
06403	FSS BEACON FALLS CT 06403	FSS NDC SPRINGFIELD MA 011
06405	FSS BEACON FALLS CT 06403	FSS NDC SPRINGFIELD MA 011
06410	FSS CHESHIRE CT 06410	FSS NDC SPRINGFIELD MA 011
06413	FSS CLINTON CT 06413	FSS NDC SPRINGFIELD MA 011
06415	FSS CHESHIRE CT 06410	FSS NDC SPRINGFIELD MA 011
06416	FSS CROMWELL CT 06416	FSS NDC SPRINGFIELD MA 011
06417	FSS CHESHIRE CT 06410	FSS NDC SPRINGFIELD MA 011
06418	FSS ANSONIA CT 06401	FSS NDC SPRINGFIELD MA 011
06419	FSS ANSONIA CT 06401	FSS NDC SPRINGFIELD MA 011
06420	FSS SALEM CT 06420	FSS NDC SPRINGFIELD MA 011
06424	FSS ANSONIA CT 06401	FSS NDC SPRINGFIELD MA 011
06426	FSS CHESHIRE CT 06410	FSS NDC SPRINGFIELD MA 011
06437	FSS SALEM CT 06420	FSS NDC SPRINGFIELD MA 011
06443	FSS SALEM CT 06420	FSS NDC SPRINGFIELD MA 011
06447	FSS ANSONIA CT 06401	FSS NDC SPRINGFIELD MA 011
06450	FSS ANSONIA CT 06401	FSS NDC SPRINGFIELD MA 011
06451	FSS ANSONIA CT 06401	FSS NDC SPRINGFIELD MA 011
06457	FSS CROMWELL CT 06416	FSS NDC SPRINGFIELD MA 011

Column A Destination ZIP Codes	Column B Scheme Bundle/ Container Placard (Added To)	Column C Facility Container Placard (Added To)
06460	FSS CROMWELL CT 06416	FSS NDC SPRINGFIELD MA 011
06461	FSS CROMWELL CT 06416	FSS NDC SPRINGFIELD MA 011
06468	FSS CLINTON CT 06413	FSS NDC SPRINGFIELD MA 011
06470	FSS CLINTON CT 06413	FSS NDC SPRINGFIELD MA 011
06472	FSS CHESHIRE CT 06410	FSS NDC SPRINGFIELD MA 011
06473	FSS CLINTON CT 06413	FSS NDC SPRINGFIELD MA 011
06475	FSS BEACON FALLS CT 06403	FSS NDC SPRINGFIELD MA 011
06477	FSS SALEM CT 06420	FSS NDC SPRINGFIELD MA 011
06478	FSS ANSONIA CT 06401	FSS NDC SPRINGFIELD MA 011
06479	FSS CLINTON CT 06413	FSS NDC SPRINGFIELD MA 011
06480	FSS CLINTON CT 06413	FSS NDC SPRINGFIELD MA 011
06482	FSS BEACON FALLS CT 06403	FSS NDC SPRINGFIELD MA 011
06483	FSS ANSONIA CT 06401	FSS NDC SPRINGFIELD MA 011
06484	FSS BEACON FALLS CT 06403	FSS NDC SPRINGFIELD MA 011
06488	FSS CLINTON CT 06413	FSS NDC SPRINGFIELD MA 011
06489	FSS CHESHIRE CT 06410	FSS NDC SPRINGFIELD MA 011
06492	FSS CHESHIRE CT 06410	FSS NDC SPRINGFIELD MA 011
06511	FSS NEW HAVEN CT 06511	FSS NDC SPRINGFIELD MA 011
06512	FSS EAST HAVEN CT 06512	FSS NDC SPRINGFIELD MA 011
06513	FSS SALEM CT 06420	FSS NDC SPRINGFIELD MA 011
06514	FSS NEW HAVEN CT 06511	FSS NDC SPRINGFIELD MA 011
06515	FSS EAST HAVEN CT 06512	FSS NDC SPRINGFIELD MA 011

Column A Destination ZIP Codes	Column B Scheme Bundle/ Container Placard (Added To)	Column C Facility Container Placard (Added To)
06516	FSS EAST HAVEN CT 06512	FSS NDC SPRINGFIELD MA 011
06517	FSS NEW HAVEN CT 06511	FSS NDC SPRINGFIELD MA 011
06518	FSS NEW HAVEN CT 06511	FSS NDC SPRINGFIELD MA 011
06519	FSS SALEM CT 06420	FSS NDC SPRINGFIELD MA 011
06524	FSS EAST HAVEN CT 06512	FSS NDC SPRINGFIELD MA 011
06525	FSS EAST HAVEN CT 06512	FSS NDC SPRINGFIELD MA 011
06704	FSS WATERBURY CT 06704	FSS NDC SPRINGFIELD MA 011
06705	FSS WATERBURY CT 06704	FSS NDC SPRINGFIELD MA 011
06706	FSS WATERBURY CT 06706	FSS NDC SPRINGFIELD MA 011
06708	FSS WATERBURY CT 06706	FSS NDC SPRINGFIELD MA 011
06710	FSS WATERBURY CT 06704	FSS NDC SPRINGFIELD MA 011
06712	FSS WATERBURY CT 06706	FSS NDC SPRINGFIELD MA 011
06716	FSS WATERBURY CT 06704	FSS NDC SPRINGFIELD MA 011
06762	FSS WATERBURY CT 06704	FSS NDC SPRINGFIELD MA 011
06770	FSS WATERBURY CT 06704	FSS NDC SPRINGFIELD MA 011
06779	FSS WATERBURY CT 06706	FSS NDC SPRINGFIELD MA 011
06786	FSS WATERBURY CT 06704	FSS NDC SPRINGFIELD MA 011
06787	FSS WATERBURY CT 06706	FSS NDC SPRINGFIELD MA 011
06790	FSS WATERBURY CT 06706	FSS NDC SPRINGFIELD MA 011
06791	FSS WATERBURY CT 06706	FSS NDC SPRINGFIELD MA 011
06795	FSS WATERBURY CT 06704	FSS NDC SPRINGFIELD MA 011
06798	FSS WATERBURY CT 06706	FSS NDC SPRINGFIELD MA 011

* * * * *

L007 5-Digit Scheme — Periodicals, Standard Mail, and Package Services Flats in Bundles

* * * * *

Deleted

Column A Destination ZIP Codes	Column B Label Container To (Deleted From)
01001	AGAWAM MA 01001
01007	BELCHERTOWN MA 01007
01013	CHICOPEE MA 01013
01020	CHICOPEE MA 01013
01022	CHICOPEE MA 01013
01027	BELCHERTOWN MA 01007
01028	EAST LONGMEADOW MA 01028
01030	AGAWAM MA 01001
01036	EAST LONGMEADOW MA 01028
01040	AGAWAM MA 01001

Column A Destination ZIP Codes	Column B Label Container To (Deleted From)
01056	EAST LONGMEADOW MA 01028
01060	BELCHERTOWN MA 01007
01062	BELCHERTOWN MA 01007
01075	AGAWAM MA 01001
01077	BELCHERTOWN MA 01007
01085	BELCHERTOWN MA 01007
01089	AGAWAM MA 01001
01095	EAST LONGMEADOW MA 01028
01106	EAST LONGMEADOW MA 01028
01118	EAST LONGMEADOW MA 01028

Column A Destination ZIP Codes	Column B Label Container To (Deleted From)
01128	EAST LONGMEADOW MA 01028
01151	EAST LONGMEADOW MA 01028
01201	PITTSFIELD MA 01201
01220	ADAMS MA 01220
01226	PITTSFIELD MA 01201
01230	ADAMS MA 01220
01238	ADAMS MA 01220
01240	PITTSFIELD MA 01201
01247	ADAMS MA 01220
01267	ADAMS MA 01220
06001	AVON CT 06001
06002	AVON CT 06001
06010	BRISTOL CT 06010
06011	BRISTOL CT 06010
06013	BURLINGTON CT 06013
06016	BROAD BROOK CT 06016
06026	AVON CT 06001
06029	BROAD BROOK CT 06016
06030	BROAD BROOK CT 06016
06032	BROAD BROOK CT 06016
06033	BURLINGTON CT 06013
06037	BERLIN CT 06037
06040	MANCHESTER CT 06040
06041	MANCHESTER CT 06045
06042	MANCHESTER CT 06040
06043	MANCHESTER CT 06040
06045	MANCHESTER CT 06045
06051	BERLIN CT 06037
06052	BERLIN CT 06037
06053	BERLIN CT 06037
06062	BROAD BROOK CT 06016
06066	MANCHESTER CT 06040
06067	BURLINGTON CT 06013
06070	BURLINGTON CT 06013
06071	BERLIN CT 06037
06073	BURLINGTON CT 06013
06074	MANCHESTER CT 06040
06078	AVON CT 06001
06081	BURLINGTON CT 06013
06082	ENFIELD CT 06082
06083	ENFIELD CT 06082
06084	AVON CT 06001
06085	AVON CT 06001
06088	ENFIELD CT 06082
06089	AVON CT 06001
06092	ENFIELD CT 06082
06093	AVON CT 06001
06095	AVON CT 06001
06096	ENFIELD CT 06082
06105	HARTFORD CT 06105
06106	HARTFORD CT 06105
06107	WEST HARTFORD CT 06107
06108	EAST HARTFORD CT 06108
06109	EAST HARTFORD CT 06108
06110	HARTFORD CT 06105
06111	WEST HARTFORD CT 06107
06112	HARTFORD CT 06105
06114	EAST HARTFORD CT 06108
06117	WEST HARTFORD CT 06107
06118	EAST HARTFORD CT 06108
06119	HARTFORD CT 06105
06120	HARTFORD CT 06105
06127	HARTFORD CT 06134

Column A Destination ZIP Codes	Column B Label Container To (Deleted From)
06128	EAST HARTFORD CT 06108
06129	HARTFORD CT 06134
06131	NEWINGTON CT 06131
06133	HARTFORD CT 06105
06134	HARTFORD CT 06134
06137	NEWINGTON CT 06131
06138	EAST HARTFORD CT 06108
06231	AMSTON CT 06231
06237	AMSTON CT 06231
06238	AMSTON CT 06231
06241	AMSTON CT 06231
06250	AMSTON CT 06231
06268	AMSTON CT 06231
06279	AMSTON CT 06231
06281	AMSTON CT 06231
06320	AMSTON CT 06231
06357	AMSTON CT 06231
06371	AMSTON CT 06231
06385	AMSTON CT 06231
06401	ANSONIA CT 06401
06403	BEACON FALLS CT 06403
06405	BEACON FALLS CT 06403
06410	CHESHIRE CT 06410
06413	CLINTON CT 06413
06415	CHESHIRE CT 06410
06416	CROMWELL CT 06416
06417	CHESHIRE CT 06410
06418	ANSONIA CT 06401
06419	ANSONIA CT 06401
06420	SALEM CT 06420
06424	ANSONIA CT 06401
06426	CHESHIRE CT 06410
06437	SALEM CT 06420
06443	SALEM CT 06420
06447	ANSONIA CT 06401
06450	MERIDEN CT 06450
06451	MERIDEN CT 06450
06457	CROMWELL CT 06416
06460	CROMWELL CT 06416
06461	CROMWELL CT 06416
06468	CLINTON CT 06413
06470	CLINTON CT 06413
06472	CHESHIRE CT 06410
06473	CLINTON CT 06413
06475	BEACON FALLS CT 06403
06477	SALEM CT 06420
06478	MERIDEN CT 06450
06479	CLINTON CT 06413
06480	CLINTON CT 06413
06482	BEACON FALLS CT 06403
06483	MERIDEN CT 06450
06484	BEACON FALLS CT 06403
06488	CLINTON CT 06413
06489	CHESHIRE CT 06410
06492	CHESHIRE CT 06410
06511	NEW HAVEN CT 06511
06512	EAST HAVEN CT 06512
06513	NEW HAVEN CT 06513
06514	NEW HAVEN CT 06511
06515	EAST HAVEN CT 06512
06516	EAST HAVEN CT 06512
06517	NEW HAVEN CT 06511
06518	NEW HAVEN CT 06511

Column A Destination ZIP Codes	Column B Label Container To (Deleted From)
06519	NEW HAVEN CT 06513
06524	EAST HAVEN CT 06512
06525	EAST HAVEN CT 06512
06704	WATERBURY CT 06704
06705	WATERBURY CT 06704
06706	WATERBURY CT 06706
06708	WATERBURY CT 06706
06710	WATERBURY CT 06704
06712	WATERBURY CT 06706
06716	WATERBURY CT 06704

Column A Destination ZIP Codes	Column B Label Container To (Deleted From)
06762	WATERBURY CT 06704
06770	WATERBURY CT 06704
06779	WATERBURY CT 06706
06786	WATERBURY CT 06704
06787	WATERBURY CT 06706
06790	WATERBURY CT 06706
06791	WATERBURY CT 06706
06795	WATERBURY CT 06704
06798	WATERBURY CT 06706

* * * * *

L012 5-Digit ZIP Scheme Combination

Changes

Column A Destination ZIP Codes	Column B Label Container To (Change From)	Column B Label Container To (Change To)
21048	FINKSBURG MD 21048	WESTMINSTER MD 21157
21057	SPARKS GLENCOE MD 21152	FOREST HILL MD 21050
21074	FINKSBURG MD 21048	WESTMINSTER MD 21157
21102	FINKSBURG MD 21048	WESTMINSTER MD 21157
21108	FINKSBURG MD 21048	COLUMBIA MD 21046
21403	ELLCOTT CITY MD 21041	ANNAPOLIS MD 21402
52305	MARION IA 52302	MOUNT VERNON IA 52314
52314	MARION IA 52302	MOUNT VERNON IA 52314
52336	MARION IA 52302	MOUNT VERNON IA 52314
67901	LIBERAL KS 67901	GUYMON OK 73942
67905	LIBERAL KS 67901	GUYMON OK 73942
67950	LIBERAL KS 67901	GUYMON OK 73942
67951	LIBERAL KS 67901	GUYMON OK 73942
67952	LIBERAL KS 67901	GUYMON OK 73942
67953	LIBERAL KS 67901	GUYMON OK 73942
67954	LIBERAL KS 67901	GUYMON OK 73942
79001	CLAUDE TX 79019	DALHART TX 79022
79002	CLAUDE TX 79019	CHILDRESS TX 79201
79003	CLAUDE TX 79019	PAMPA TX 79065
79005	CLAUDE TX 79019	PAMPA TX 79065
79007	BORGER TX 79007	PAMPA TX 79065
79008	BORGER TX 79007	PAMPA TX 79065
79009	CLAUDE TX 79019	PLAINVIEW TX 79072
79010	BOYS RANCH TX 79010	DALHART TX 79022
79011	BRISCOE TX 79011	PAMPA TX 79065
79012	CLAUDE TX 79019	DALHART TX 79022
79013	BOYS RANCH TX 79010	DALHART TX 79022
79014	BRISCOE TX 79011	PAMPA TX 79065
79015	BORGER TX 79007	DALHART TX 79022
79016	BORGER TX 79007	DALHART TX 79022
79018	BOYS RANCH TX 79010	DALHART TX 79022
79019	CLAUDE TX 79019	CHILDRESS TX 79201
79021	BOYS RANCH TX 79010	PLAINVIEW TX 79072
79024	CLAUDE TX 79019	PAMPA TX 79065
79025	CLAUDE TX 79019	PLAINVIEW TX 79072

Column A Destination ZIP Codes	Column B Label Container To (Change From)	Column B Label Container To (Change To)
79027	DIMMITT TX 79027	PLAINVIEW TX 79072
79031	BOYS RANCH TX 79010	PLAINVIEW TX 79072
79032	BOYS RANCH TX 79010	PLAINVIEW TX 79072
79033	CLAUDE TX 79019	PAMPA TX 79065
79034	CLAUDE TX 79019	PAMPA TX 79065
79035	CLAUDE TX 79019	PLAINVIEW TX 79072
79039	CLAUDE TX 79019	CHILDRESS TX 79201
79040	BOYS RANCH TX 79010	DALHART TX 79022
79041	DIMMITT TX 79027	PLAINVIEW TX 79072
79042	BOYS RANCH TX 79010	PLAINVIEW TX 79072
79043	BOYS RANCH TX 79010	PLAINVIEW TX 79072
79044	BOYS RANCH TX 79010	DALHART TX 79022
79045	DIMMITT TX 79027	PLAINVIEW TX 79072
79046	BRISCOE TX 79011	PAMPA TX 79065
79051	BOYS RANCH TX 79010	DALHART TX 79022
79052	BORGER TX 79007	PLAINVIEW TX 79072
79053	CLAUDE TX 79019	PLAINVIEW TX 79072
79054	BOYS RANCH TX 79010	PAMPA TX 79065
79056	BOYS RANCH TX 79010	PAMPA TX 79065
79057	BRISCOE TX 79011	PAMPA TX 79065
79058	BOYS RANCH TX 79010	DALHART TX 79022
79059	BRISCOE TX 79011	PAMPA TX 79065
79061	BRISCOE TX 79011	PAMPA TX 79065
79062	BOYS RANCH TX 79010	DALHART TX 79022
79063	BOYS RANCH TX 79010	PLAINVIEW TX 79072
79064	BORGER TX 79007	PLAINVIEW TX 79072
79065	BRISCOE TX 79011	PAMPA TX 79065
79066	BRISCOE TX 79011	PAMPA TX 79065
79068	CLAUDE TX 79019	DALHART TX 79022
79070	DALHART TX 79022	PAMPA TX 79065
79072	DIMMITT TX 79027	PLAINVIEW TX 79072
79073	DIMMITT TX 79027	PLAINVIEW TX 79072
79077	CLAUDE TX 79019	PAMPA TX 79065
79078	BOYS RANCH TX 79010	DALHART TX 79022

Column A Destination ZIP Codes	Column B Label Container To (Change From)	Column B Label Container To (Change To)
79079	BRISCOE TX 79011	PAMPA TX 79065
79080	BOYS RANCH TX 79010	PAMPA TX 79065
79081	DALHART TX 79022	PAMPA TX 79065
79082	BOYS RANCH TX 79010	PLAINVIEW TX 79072
79083	CLAUDE TX 79019	DALHART TX 79022
79084	BOYS RANCH TX 79010	DALHART TX 79022
79085	CLAUDE TX 79019	PLAINVIEW TX 79072
79086	BOYS RANCH TX 79010	DALHART TX 79022
79087	BOYS RANCH TX 79010	DALHART TX 79022
79088	BORGER TX 79007	PLAINVIEW TX 79072
79091	CLAUDE TX 79019	PLAINVIEW TX 79072
79092	CLAUDE TX 79019	DALHART TX 79022
79093	CLAUDE TX 79019	PAMPA TX 79065
79094	BOYS RANCH TX 79010	PLAINVIEW TX 79072
79095	BRISCOE TX 79011	CHILDRESS TX 79201
79096	BRISCOE TX 79011	PAMPA TX 79065
79097	BOYS RANCH TX 79010	PAMPA TX 79065
79098	CLAUDE TX 79019	DALHART TX 79022
79105	AMARILLO TX 79105	AMARILLO TX 79109
79107	AMARILLO TX 79107	AMARILLO TX 79102
79108	AMARILLO TX 79107	AMARILLO TX 79102
79110	AMARILLO TX 79110	AMARILLO TX 79109
79111	AMARILLO TX 79107	AMARILLO TX 79102
79114	AMARILLO TX 79120	AMARILLO TX 79109
79116	AMARILLO TX 79120	AMARILLO TX 79106
79117	AMARILLO TX 79120	AMARILLO TX 79106
79118	AMARILLO TX 79110	AMARILLO TX 79109
79120	AMARILLO TX 79120	AMARILLO TX 79109
79159	AMARILLO TX 79120	AMARILLO TX 79106
79166	AMARILLO TX 79105	AMARILLO TX 79109
79174	AMARILLO TX 79105	AMARILLO TX 79109
79178	AMARILLO TX 79105	AMARILLO TX 79109
79189	AMARILLO TX 79105	AMARILLO TX 79109
79220	AFTON TX 79220	CHILDRESS TX 79201
79221	AFTON TX 79220	CHILDRESS TX 79201
79223	AFTON TX 79220	CHILDRESS TX 79201
79225	AFTON TX 79220	CHILDRESS TX 79201
79227	AFTON TX 79220	CHILDRESS TX 79201
79229	AFTON TX 79220	CHILDRESS TX 79201
79231	AFTON TX 79220	CHILDRESS TX 79201
79233	AFTON TX 79220	CHILDRESS TX 79201
79234	AFTON TX 79220	CHILDRESS TX 79201
79235	CHILDRESS TX 79201	PLAINVIEW TX 79072
79236	AFTON TX 79220	CHILDRESS TX 79201
79239	AFTON TX 79220	CHILDRESS TX 79201
79240	AFTON TX 79220	CHILDRESS TX 79201
79241	AFTON TX 79220	CHILDRESS TX 79201
79243	AFTON TX 79220	CHILDRESS TX 79201
79244	AFTON TX 79220	CHILDRESS TX 79201
79247	AFTON TX 79220	CHILDRESS TX 79201
79248	AFTON TX 79220	CHILDRESS TX 79201
79250	AFTON TX 79220	CHILDRESS TX 79201
79255	AFTON TX 79220	CHILDRESS TX 79201
79256	AFTON TX 79220	CHILDRESS TX 79201
79257	AFTON TX 79220	CHILDRESS TX 79201
79258	AFTON TX 79220	CHILDRESS TX 79201
79259	AFTON TX 79220	CHILDRESS TX 79201
79261	AFTON TX 79220	CHILDRESS TX 79201

Newly Added

Column A Destination ZIP Codes	Column B Label Container To (Added To)
03041	LONDONDERRY NH 03053
03073	SALEM NH 03079
03082	GOFFSTOWN NH 03045
03215	LACONIA NH 03246
03217	LACONIA NH 03246
03227	TILTON NH 03276
03230	TILTON NH 03276
03231	TILTON NH 03276
03233	TILTON NH 03276
03238	GOFFSTOWN NH 03045
03240	TILTON NH 03276
03241	TILTON NH 03276
03251	LACONIA NH 03246
03252	TILTON NH 03276
03256	TILTON NH 03276
03259	TILTON NH 03276
03260	GOFFSTOWN NH 03045
03262	LACONIA NH 03246
03266	GOFFSTOWN NH 03045
03272	GOFFSTOWN NH 03045
03273	GOFFSTOWN NH 03045
03279	GOFFSTOWN NH 03045
03280	TILTON NH 03276
03282	GOFFSTOWN NH 03045
03284	TILTON NH 03276
03289	LACONIA NH 03246
03291	AUBURN NH 03032
03293	LACONIA NH 03246
03443	MILTON NH 03851
03445	MILTON NH 03851
03448	MILTON NH 03851
03450	MILTON NH 03851
03456	MILTON NH 03851
03457	MILTON NH 03851
03464	MILTON NH 03851
03466	MILTON NH 03851
03468	MILTON NH 03851
03469	MILTON NH 03851
03803	PORTSMOUTH NH 03801
03804	PORTSMOUTH NH 03801
03812	MILTON NH 03851
03813	CENTER TUFTONBORO NH 03816
03814	MILTON NH 03851
03815	DOVER NH 03820
03817	MILTON NH 03851
03830	MILTON NH 03851
03832	MILTON NH 03851
03836	MILTON NH 03851
03838	MILTON NH 03851
03846	MILTON NH 03851
03847	MILTON NH 03851
03849	MILTON NH 03851
03850	CENTER TUFTONBORO NH 03816
03851	MILTON NH 03851
03852	MILTON NH 03851
03853	MILTON NH 03851
03859	MILTON NH 03851
03864	MILTON NH 03851
03871	MILTON NH 03851
03875	MILTON NH 03851
03882	MILTON NH 03851
03883	MILTON NH 03851
03887	MILTON NH 03851

Column A Destination ZIP Codes	Column B Label Container To (Added To)
03890	MILTON NH 03851
03897	MILTON NH 03851
04549	BATH ME 04530
21088	WESTMINSTER MD 21157
21405	ANNAPOLIS MD 21402
21409	ANNAPOLIS MD 21402
21411	ANNAPOLIS MD 21402
21412	ANNAPOLIS MD 21402
79109	AMARILLO TX 79109
79119	AMARILLO TX 79106
79168	AMARILLO TX 79109

Deleted

Column A Destination ZIP Codes	Column B Label Container To (Deleted From)
21054	EDGEWATER MD 21037
21114	ODENTON MD 21113
52004	ANDREW IA 52030

Column A Destination ZIP Codes	Column B Label Container To (Deleted From)
52068	DUBUQUE IA 52001
52302	MARION IA 52302
95620	DAVIS CA 95617

* * * * *

L606 5-Digit Scheme — Standard Mail, First-Class Mail, and Package Services Parcels

Changes

Column A Destination ZIP Codes	Column B Label Container To (Change From)	Column B Label Container To (Change To)
47804	ROSE IN 47803	TERRE HAUTE IN 47801
78252	SAN ANTONIO TX 78245	SAN ANTONIO TX 78222

— Logistics, Network Development, and Support, Network Operations, 4-7-22

Human Resources

Coping Mechanisms: April is Stress Awareness Month

April is Stress Awareness Month, a time to learn about how stress affects our health. Everyone experiences some level of stress, which refers to how the body and brain respond to demands and challenges. Stress can be positive or negative. However, left unchecked, prolonged stress can lead to heart disease, high blood pressure, diabetes, depression, and other long-term health problems.

Stress can cause the following signs and symptoms:

- Feelings of fear, worry, sadness, or frustration;
- Changes in appetite, energy, and interests;
- Difficulty sleeping, concentrating, and making decisions; or
- Physical reactions, such as headaches, body pains, skin rashes, and stomach problems.

Workplace stress can also lead to burnout, which is occupational stress that has not been successfully managed. According to the World Health Organization, burnout is characterized by three dimensions: feelings of energy depletion or exhaustion; increased mental distance from one’s job, or having negative feelings related to one’s job; and reduced professional efficacy (see [who.int/news/item/28-05-2019-burn-out-an-occupational-phenomenon-international-classification-of-diseases](https://www.who.int/news/item/28-05-2019-burn-out-an-occupational-phenomenon-international-classification-of-diseases)).

The National Institutes of Health (NIH) offer the following tips for coping with stress:

- Exercise regularly. Walking can improve your mood and health.
- Try relaxing activities, such as meditation, music, or reading.

- Stay connected with family and friends. Set aside leisure time.
- Set goals and priorities and be aware when you are taking on too much.

Employees who feel stressed should seek assistance from the *Employee Assistance Program* — a free, voluntary, and confidential service to help USPS® employees overcome challenges affecting their physical and mental health, family life, and job performance — or a health care professional (see blue.usps.gov/hr/pay-benefits/benefits/employee-assistance-program.htm).

Learning to cope with stress in a healthy way will make you and those you care about more resilient. Take care of yourself one small way each day.

This information does not constitute medical advice, and individuals should seek consultation with their own health care professionals. For more information about stress awareness, visit the following resources:

- NIH at nimh.nih.gov/sites/default/files/documents/health/publications/so-stressed-out-fact-sheet/20-mh-8125-imsostressedout_1.pdf.
- The Centers for Disease Control and Prevention at cdc.gov/mentalhealth/stress-coping.
- The USPS Wellness page on *LiteBlue* at lite-blue.usps.gov/humanresources/benefits/health-wellness/welcome.htm.

— Benefits and Wellness, Human Resources, 4-7-22

Sometimes you may feel...

sadness alone
apprehensive
 pressure pain nervous uneasiness
 depression **frustrated** angst
 grief restless fatigue unhappy
 panic **tension** afraid
 concern angry down stress
 anxious **emotional** worry



Everyone experiences some level of stress, which refers to how the body and brain respond to demands and challenges. Stress can cause the following signs and symptoms: feelings of fear, worry, sadness, or frustration; changes in appetite, energy, and interests; difficulty sleeping, concentrating, and making decisions; or physical reactions, such as headaches, body pains, skin rashes, and stomach problems.



Learning to cope with stress in a healthy way will make you and those you care about more resilient. Take care of yourself one small way each day.

- Exercise regularly to improve your mood and health.
- Try relaxing activities, such as meditation, music, or reading.
- Stay connected with family and friends. Set aside leisure time.
- Set goals and priorities and be aware when you are taking on too much.



USPS offers the Employee Assistance Program (EAP) to all employees. It is a free, voluntary, and confidential service to help USPS employees. Counselors can be reached 24/7 at: 1-800-327-4968 (1-800-EAP4YOU), TTY: 1-877-492-7341, or www.EAP4YOU.com.

Information Security

Beware of Ransomware

For criminals, employees are a doorway into an organization. The key to that door is often social engineering attacks in the form of phishing, whaling, and smishing, which can allow criminals access to protected areas of a network if any employee falls victim to them.

Ransomware is designed to encrypt files on a device, rendering them unusable. Criminals then demand ransom in exchange for decryption of the files; if the ransom is not paid, the files may be leaked or sold.

Empowering employees and contractors to understand how ransomware attacks begin can help USPS® reduce the likelihood of falling victim to ransomware.

If you believe your computer or device has been affected by ransomware, follow these steps:

- Stop working on the infected device.

- Notify the Cybersecurity Operations Center by emailing CyberSafe@usps.gov or calling 866-877-7247.
- Report the incident to your manager or supervisor.
- Do not use the computer or device until you are instructed to do so by the Computer Incident Response Team or the Help Desk.

Remember, if you suspect ransomware has been installed on your computer, report it immediately.

For more information about ransomware and other cybersecurity issues, visit the CyberSafe at USPS® pages on *Blue* (blue.usps.gov/cyber) and *LiteBlue* (lite-blue.usps.gov/cyber).

— Corporate Information Security Office,
Chief Information Security Officer
and Digital Solutions, 4-7-22

Mailing and Shipping Services

Mail Alert

The mailings below will be deposited in the near future. Offices must process this mail according to applicable service standards with the in-home dates in mind. Mailers wishing to participate in these alerts, for mailings of 1 mil-

lion pieces or more, must contact Business Service Network Integration at 202-268-3258 at least 1 month before the requested delivery dates.

Requested Delivery Dates	Title of Mailing	Class and Type of Mail	Number of Pieces (Millions)	Distribution	Presort Level	Comments
04/18/22–04/21/22	Midnight Velvet	Standard Catalog	1.0	Nationwide	3/5 Digit	Quad Graphics
04/18/22–04/21/22	Seventh Avenue	Standard Catalog	1.0	Nationwide	3/5 Digit	Quad Graphics
04/18/22–04/21/22	Monroe & Main	Standard Catalog	1.0	Nationwide	3/5 Digit	Quad Graphics
04/25/22–04/28/22	Ginny's	Standard Catalog	1.0	Nationwide	3/5 Digit	Quad Graphics

— Business Customer Support and Services, Sales and Customer Relations, 4-7-22

Stamp Services

Pictorial Postmarks Announcement

As a community service, the Postal Service™ offers pictorial postmarks to commemorate local events celebrated in communities throughout the nation. A list of events for which pictorial postmarks are authorized appears on the following pages. The sponsor of the pictorial postmark appears in italics under the date. Also provided are illustrations of these postmarks.

People attending these local events may obtain the postmark in person at the temporary Post Office™ station established there. Those who cannot attend the event but who wish to obtain the postmark may submit a mail order request. Pictorial postmarks are available only for the dates indicated, and *requests must be postmarked no later than 30 days following the requested pictorial postmark date.*

All requests must include a stamped envelope or postcard bearing at least the minimum First-Class Mail® postage. Items submitted for postmark may not include

postage issued after the date of the requested postmark. Such items will be returned unserved.

Customers wishing to obtain a postmark must affix stamps to any envelope or postcard of their choice, address the envelope or postcard to themselves or others, insert a card of postcard thickness in envelopes for sturdiness, and tuck in the flap. Place the envelope or postcard in a larger envelope and address it to: Pictorial Postmarks, followed by the Name of the Station, Address, City, State, ZIP+4® Code, as listed next to the postmark.

Customers can also send stamped envelopes and postcards without addresses for postmark, as long as they supply a larger envelope with adequate postage and their return address. After applying the pictorial postmark, the Postal Service returns the items (with or without addresses) under addressed protective cover.

The following pictorial postmark has been extended for 30 days:



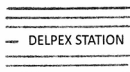
March 26–27, 2022

The Springfield Stamp Club
 SPRINGPEX Station
 Postmaster
 7051 Brookfield Plaza
 Springfield, VA 22150-9998

April 9, 2022

Brandywine Valley Stamp Club

DELPEX Station
 Postmaster
 320 Waycross Road
 Wilmington, DE 19803-2950



— Stamp Services,
 Marketing, 4-7-22

How to Order the First-Day-of-Issue Digital Color or Traditional Postmarks

Customers have 120 days to obtain the first-day-of-issue postmarks by mail. Each cover must have sufficient postage to meet First-Class Mail® requirements. Customers may purchase new stamps at their local Post Office™, by phone at 844-737-7826, or on The Postal Store® website at usps.com/shop.

Digital Color Postmarks

Only select stamp issues offer a digital color postmark. Customers may submit #6 or #10 envelopes constructed of paper rated as “laser safe.” The Postal Service™ recommends envelopes of 80-pound Accent Opaque, acid-free, 9/16-inch side seams with no glue on the flap. The maximum size of all digital color postmarks is 2 inches (vertically) by 4 inches (horizontally). Allow sufficient space on the envelope to accommodate the postmark. Do not use self-adhesive labels for addresses on the envelope. Two test envelopes must be included. There is a minimum of 10 envelopes at 50 cents per postmark required at the time of servicing. Customers must submit a check, money order, or credit card for payment.

The Postal Service reserves the right to not accept hand-painted and other cachet envelopes that are not compatible with our digital color postmark equipment. The Postal Service also reserves the right to substitute traditional black rubber postmarks if use of nonspecified envelopes results in poor image quality or damage to equipment.

Customers must affix the stamps to the envelopes and address them to themselves or others for return through the mail. Or, they may include an additional self-addressed return envelope, large enough to accommodate their canceled items, with sufficient postage affixed for return of

their postmarked items. Address customer requests for digital color postmarks to:

FDOI – (Name of Stamp Issue)
 USPS Stamp Fulfillment Services
 8300 NE Underground Drive, Suite 300
 Kansas City, MO 64144-9900

After applying the first-day-of-issue postmark, the Postal Service will return the envelopes to the customer by U.S. Mail®.

Traditional Postmarks

Customers must affix the stamps to the envelopes and address them to themselves or others for return through the mail. Or, they may include an additional self-addressed return envelope, large enough to accommodate their canceled items, with sufficient postage affixed for return of their postmarked items. Address customer requests for traditional postmarks to:

FDOI – (Name of Stamp Issue)
 USPS Stamp Fulfillment Services
 8300 NE Underground Drive, Suite 300
 Kansas City, MO 64144-9900

After applying the first-day-of-issue postmark, the Postal Service will return the envelopes to the customer by U.S. Mail™. There is no charge for the first 50 postmarks. There is a 5-cent charge for each additional postmark over 50. Customers must submit a check, money order, or credit card for payment.

Locally produced items are not authorized. Only merchandise that has been approved and assigned an item number by Headquarters Retail Marketing may be produced and sold.



FIRST DAY OF ISSUE

FDOI – Blueberries Stamp

USPS Stamp Fulfillment Services
 8300 NE Underground Drive, Suite 300
 Kansas City, MO 64144-9900
 May 9, 2022

Black and White Pictorial



FDOI – U.S. Flags 2022 Stamp

USPS Stamp Fulfillment Services
 8300 NE Underground Drive, Suite 300
 Kansas City, MO 64144-9900
 May 9, 2022

Digital Color Pictorial



FIRST DAY OF ISSUE

FDOI – U.S. Flags 2022 Stamp

USPS Stamp Fulfillment Services
8300 NE Underground Drive, Suite 300
Kansas City, MO 64144-9900

May 9, 2022

Black and White Pictorial



FDOI – Love 2022 Stamps

USPS Stamp Fulfillment Services
8300 NE Underground Drive, Suite 300
Kansas City, MO 64144-9900

May 14, 2022

Digital Color Pictorial



FDOI – Love 2022 Stamps

USPS Stamp Fulfillment Services
8300 NE Underground Drive, Suite 300
Kansas City, MO 64144-9900

May 14, 2022

Black and White Pictorial



FDOI – Lunar New Year – Year of the Tiger Stamp

USPS Stamp Fulfillment Services
8300 NE Underground Drive, Suite 300
Kansas City, MO 64144-9900

May 20, 2022

Digital Color Pictorial



FDOI – Lunar New Year – Year of the Tiger Stamp

USPS Stamp Fulfillment Services
8300 NE Underground Drive, Suite 300
Kansas City, MO 64144-9900

May 20, 2022

Black and White Pictorial

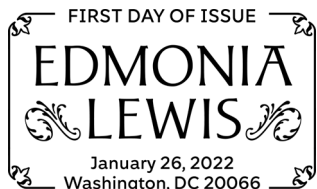


FDOI – Edmonia Lewis Stamp

USPS Stamp Fulfillment Services
8300 NE Underground Drive, Suite 300
Kansas City, MO 64144-9900

May 26, 2022

Digital Color Pictorial

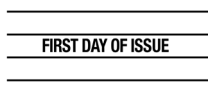


FDOI – Edmonia Lewis Stamp

USPS Stamp Fulfillment Services
8300 NE Underground Drive, Suite 300
Kansas City, MO 64144-9900

May 26, 2022

Black and White Pictorial



FD0I – Butterfly Garden Flowers Stamps

USPS Stamp Fulfillment Services
8300 NE Underground Drive, Suite 300
Kansas City, MO 64144-9900

June 1, 2022

Black and White Pictorial

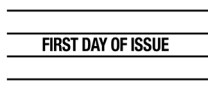


FD0I – Monument Valley Stamp

USPS Stamp Fulfillment Services
8300 NE Underground Drive, Suite 300
Kansas City, MO 64144-9900

June 14, 2022

Digital Color Pictorial



FD0I – Monument Valley Stamp

USPS Stamp Fulfillment Services
8300 NE Underground Drive, Suite 300
Kansas City, MO 64144-9900

June 14, 2022

Black and White Pictorial

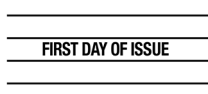


FD0I – Palace of Fine Arts Stamp

USPS Stamp Fulfillment Services
8300 NE Underground Drive, Suite 300
Kansas City, MO 64144-9900

June 14, 2022

Digital Color Pictorial



FD0I – Palace of Fine Arts Stamp

USPS Stamp Fulfillment Services
8300 NE Underground Drive, Suite 300
Kansas City, MO 64144-9900

June 14, 2022

Black and White Pictorial



FD0I – Title IX Stamps

USPS Stamp Fulfillment Services
8300 NE Underground Drive, Suite 300
Kansas City, MO 64144-9900

July 3, 2022

Digital Color Pictorial



FD0I – Title IX Stamps

USPS Stamp Fulfillment Services
8300 NE Underground Drive, Suite 300
Kansas City, MO 64144-9900

July 3, 2022

Black and White Pictorial



Digital Color Pictorial

FD0I – Mountain Flora Stamps

USPS Stamp Fulfillment Services
8300 NE Underground Drive, Suite 300
Kansas City, MO 64144-9900

July 14, 2022



Black and White Pictorial

FD0I – Mountain Flora Stamps

USPS Stamp Fulfillment Services
8300 NE Underground Drive, Suite 300
Kansas City, MO 64144-9900

July 14, 2022



Digital Color Pictorial

FD0I – African Daisy Stamp

USPS Stamp Fulfillment Services
8300 NE Underground Drive, Suite 300
Kansas City, MO 64144-9900

July 14, 2022



Black and White Pictorial

FD0I – African Daisy Stamp

USPS Stamp Fulfillment Services
8300 NE Underground Drive, Suite 300
Kansas City, MO 64144-9900

July 14, 2022



Digital Color Pictorial

FD0I – Sunflower Bouquet Stamp

USPS Stamp Fulfillment Services
8300 NE Underground Drive, Suite 300
Kansas City, MO 64144-9900

July 24, 2022



Black and White Pictorial

FD0I – Sunflower Bouquet Stamp

USPS Stamp Fulfillment Services
8300 NE Underground Drive, Suite 300
Kansas City, MO 64144-9900

July 24, 2022



Digital Color Pictorial

FD0I – Tulips Stamp

USPS Stamp Fulfillment Services
8300 NE Underground Drive, Suite 300
Kansas City, MO 64144-9900

July 24, 2022

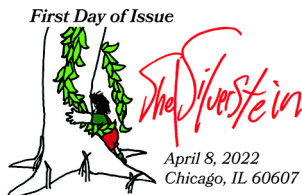


Black and White Pictorial

FD0I – Tulips Stamp

USPS Stamp Fulfillment Services
8300 NE Underground Drive, Suite 300
Kansas City, MO 64144-9900

July 24, 2022



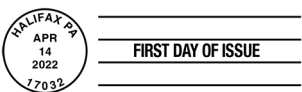
Digital Color Pictorial

FD0I – Shel Silverstein Stamp
 USPS Stamp Fulfillment Services
 8300 NE Underground Drive, Suite 300
 Kansas City, MO 64144-9900
 August 8, 2022



Black and White Pictorial

FD0I – Shel Silverstein Stamp
 USPS Stamp Fulfillment Services
 8300 NE Underground Drive, Suite 300
 Kansas City, MO 64144-9900
 August 8, 2022



Black and White Pictorial

FD0I – Flags on Barns Stamps
 USPS Stamp Fulfillment Services
 8300 NE Underground Drive, Suite 300
 Kansas City, MO 64144-9900
 August 14, 2022



Digital Color Pictorial

FD0I – George Morrison Stamps
 USPS Stamp Fulfillment Services
 8300 NE Underground Drive, Suite 300
 Kansas City, MO 64144-9900
 August 22, 2022



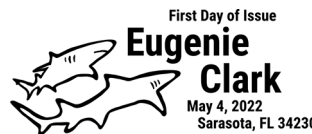
Black and White Pictorial

FD0I – George Morrison Stamps
 USPS Stamp Fulfillment Services
 8300 NE Underground Drive, Suite 300
 Kansas City, MO 64144-9900
 August 22, 2022



Digital Color Pictorial

FD0I – Eugenie Clark Stamp
 USPS Stamp Fulfillment Services
 8300 NE Underground Drive, Suite 300
 Kansas City, MO 64144-9900
 September 4, 2022



Black and White Pictorial

FD0I – Eugenie Clark Stamp
 USPS Stamp Fulfillment Services
 8300 NE Underground Drive, Suite 300
 Kansas City, MO 64144-9900
 September 4, 2022

Celebrate the 50th Anniversary of

Title IX

Civil Rights
legislation
with
USPS
Forever[®]
Stamps



On Sale
Nationwide:
March 3, 2022

